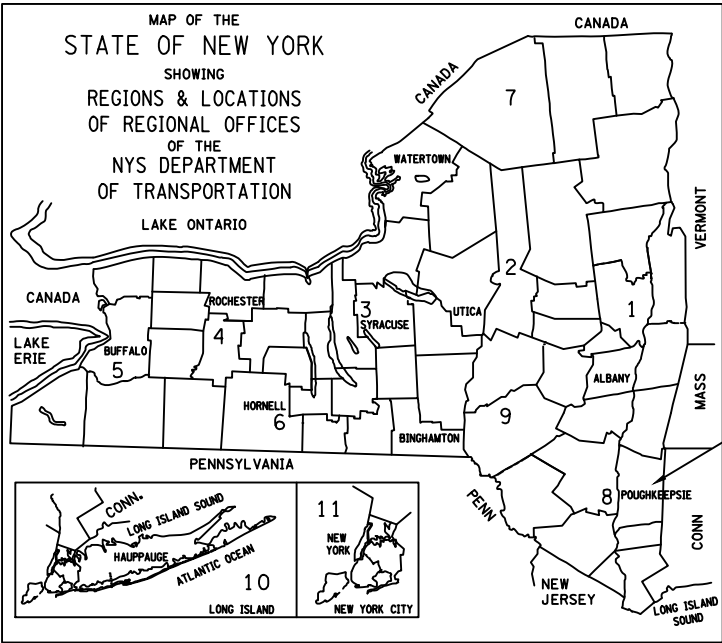
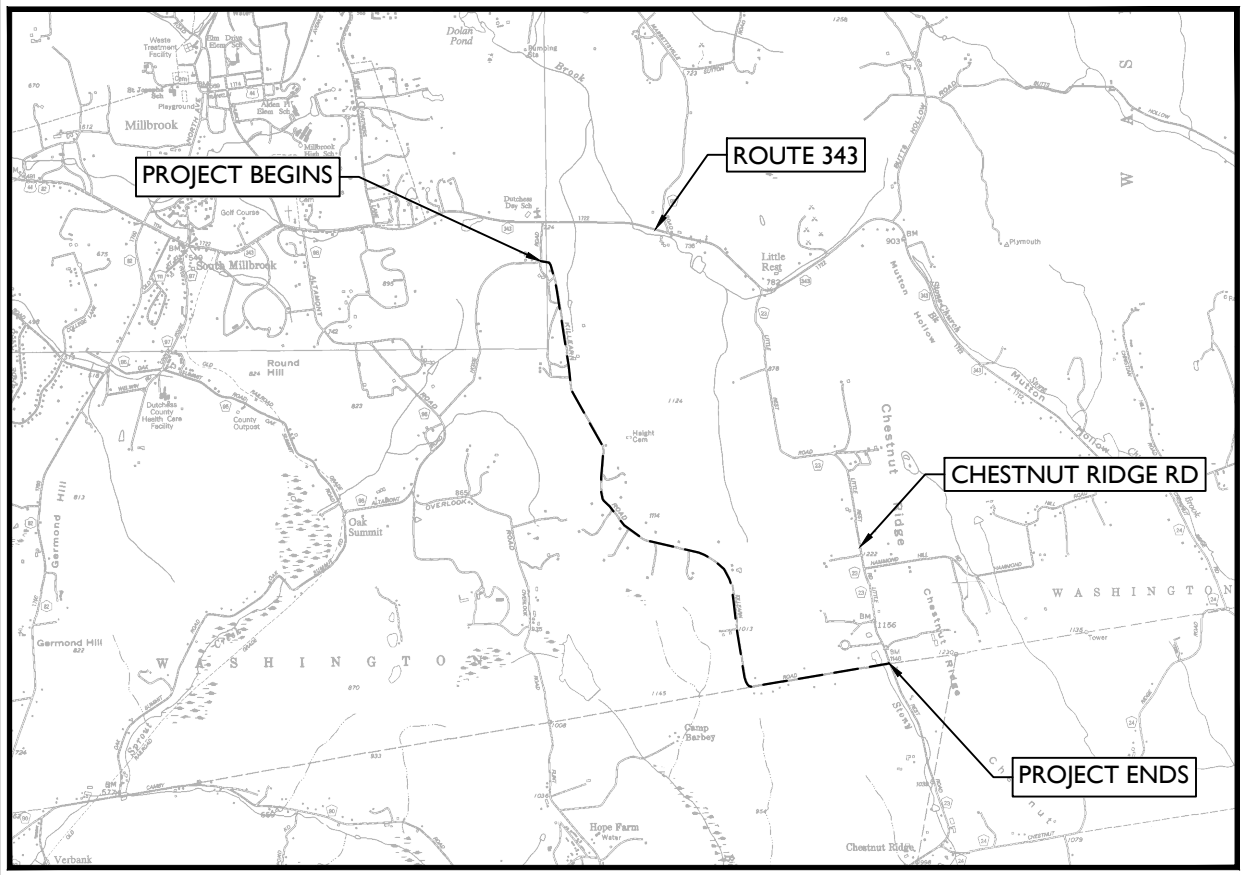


KILLEARN ROAD IMPROVEMENTS
TOWN OF WASHINGTON
DUTCHESS COUNTY
STATE OF NEW YORK



PROJECT SITE



PROJECT LOCATION MAP

I HEREBY CERTIFY THAT I AM THE OWNER OF RECORD OF THE SITE HEREIN
DEPICTED AND THAT I CONCUR WITH THE SUBMISSION.

OWNER _____ DATE _____

APPROVED BY THE PLANNING BOARD OF THE TOWNSHIP OF "ENTER NAME" AT THE
REGULAR MEETING OF _____ DATE _____

CHAIRMAN _____ DATE _____

SECRETARY _____ DATE _____

ENGINEER _____ DATE _____

MAP REFERENCE:

- EXISTING CONDITIONS FROM A SURVEY BY C.T. MALE ASSOCIATES, ENTITLED
"RIGHT OF WAY AND TOPOGRAPHIC SURVEY PREPARED FOR TOWN OF
WASHINGTON HIGHWAY DEPARTMENT", DATED MAY 11, 2023.
- EXISTING CONDITIONS FROM FIELD VISITS BY COLLIERS ENGINEERING AND
DESIGN FROM OCTOBER 2022 TO MAY 2023.

INDEX OF SHEET

DESCRIPTION	SHEET No.
COVER SHEET	1
NOTES	2
TYPICAL SECTIONS	3-4
GENERAL PLAN	5 - 27
DETAILS	28

PREPARED BY:
ON:

DRAFT



Engineering
& Design

www.colliersengineering.com

Copyright © 2025, Colliers Engineering & Design. All Rights Reserved. This drawing and all the information contained herein is authorized for use only by the party for whom
the services were contracted or to whom it is verified. This drawing may not be copied, reused, altered, distributed or relied upon for any other purpose without the
express written consent of Colliers Engineering & Design.

IT IS A VIOLATION OF LAW FOR ANY PERSON,
UNLESS THEY ARE ACTING UNDER THE DIRECTION
OF A LICENSED PROFESSIONAL ENGINEER,
ARCHITECT, LANDSCAPE ARCHITECT, OR LAND
SURVEYOR, TO ALTER AN ITEM IN ANY WAY. IF AN
ITEM BEARING THE STAMP OF A LICENSED
PROFESSIONAL IS ALTERED, THE ALTERING
ENGINEER, ARCHITECT, LANDSCAPE ARCHITECT,
OR LAND SURVEYOR SHALL STAMP THE
DOCUMENT AND INCLUDE THE NOTATION
"ALTERED BY" FOLLOWED BY THEIR SIGNATURE,
THE DATE OF SUCH ALTERATION, AND A SPECIFIC
DESCRIPTION OF THE ALTERATION.

AS BUILT REVISIONS
DESCRIPTION OF WORK:

SIGNATURE

DATE

DOCUMENT NAME: C-CVER

KILLEARN ROAD IMPROVEMENTS

KILLEARN ROAD

TOWN OF WASHINGTON

DUTCHESS COUNTY

STATE OF NEW YORK

PIN: N/A

BRIDGE/CULVERT: N/A



Engineering
& Design

ALBANY

18 Corporate Woods Blvd.

Suite 400

Albany, NY 12211

Phone: 518.459.3252

COLLIERS ENGINEERING & DESIGN,
ARCHITECTURE, LANDSCAPE ARCHITECTURE,
LAND SURVEYING, P.E.

NOTE: ALL UTILITY LOCATIONS SHOWN ARE QUALITY LEVEL C (QLC).

COVER SHEET

ALL DIMENSIONS IN US SURVEY FEET UNLESS OTHERWISE NOTED

MANAGER: DAF DESIGNED BY: JWH DRAWN BY: ASC CHECKED BY: SNH

PROJECT NUMBER:
25006179G

DRAWING No. CVER-1

SHEET No. 01 OF 28

PRINT DATE: 6/16/2025

CIVIL NOTES

1.

ALL WORK DETAILED ON THESE PLANS AND PERFORMED UNDER THIS CONTRACT SHALL BE CONSTRUCTED IN ACCORDANCE WITH THE PROJECT SPECIFICATIONS AND THE PROJECT GEOTECHNICAL REPORT. WHERE INDICATED, STATE AND/OR LOCAL STANDARD SPECIFICATIONS SHALL APPLY.
2.

THE CONTRACTOR SHALL ABIDE BY ALL LOCAL, STATE, AND FEDERAL LAWS, RULES AND REGULATIONS WHICH APPLY TO THE CONSTRUCTION OF THESE IMPROVEMENTS, INCLUDING NYSDEC REQUIREMENTS WITH RESPECT TO STORM WATER DISCHARGE.
3.

PRIOR TO CONSTRUCTION, THE CONTRACTOR SHALL FIELD VERIFY EXISTING CONDITIONS AGAINST THE PROVIDED SURVEY INCLUDING THE HORIZONTAL AND VERTICAL LOCATIONS OF ALL POTENTIAL OBSTRUCTIONS INCLUDING ALL UNDERGROUND UTILITIES. SHOULD A CONFLICT EXIST, THE CONTRACTOR SHALL NOTIFY THE OWNER AND ENGINEER SO THAT THE CONFLICT CAN BE RESOLVED WITH A MINIMUM AMOUNT OF DELAY.
4.

THE CONTRACTOR SHALL CONTACT LINE LOCATING SERVICE FOR THE LOCATION OF EXISTING UTILITIES TWO (2) WORKING DAYS PRIOR TO ANY EXCAVATION.
5.

ALL ELECTRICAL, TELEPHONE, CABLE TV, GAS AND OTHER UTILITY LINES, CABLES AND APPURTENANCES ENCOUNTERED DURING CONSTRUCTION THAT REQUIRE RELOCATION SHALL BE COORDINATED WITH THAT UTILITY. THE CONTRACTOR SHALL BE RESPONSIBLE FOR COORDINATION OF ALL NECESSARY UTILITY ADJUSTMENTS. NO ADDITIONAL COMPENSATION WILL BE ALLOWED FOR DELAY OR INCONVENIENCES CAUSED BY UTILITY COMPANY WORK CREWS. THE CONTRACTOR MY BE REQUIRED TO RESCHEDULE HIS ACTIVITIES TO ALLOW UTILITY CREWS TO PERFORM THEIR REQUIRED WORK.
6.

THE CONTRACTOR IS RESPONSIBLE FOR PROTECTING ALL EXISTING UTILITY LINES WITHIN THE CONSTRUCTION AREA. ANY DAMAGE TO EXISTING FACILITIES CAUSED BY CONSTRUCTION ACTIVITY SHALL BE REPAIRED OR REPLACED AT THE CONTRACTOR'S EXPENSE.
7.

CONSTRUCTION SHALL NOT OCCUR IN ANY PUBLIC RIGHTS OF WAY, PUBLIC OR PRIVATE EASEMENTS, BEYOND THE LIMITS OF DISTURBANCE, OR OUTSIDE THE PROPERTY LIMITS WITHOUT A PERMIT.
8.

ANY PUBLIC OR PRIVATE PROPERTY OR IMPROVEMENTS THAT ARE DAMAGED DURING CONSTRUCTION SHALL BE REPAIRED TO THE SATISFACTION OF THE OWNER AT THE COST OF THE CONTRACTOR.
9.

OVERNIGHT PARKING OF CONSTRUCTION EQUIPMENT SHALL NOT OBSTRUCT DRIVEWAYS OR DESIGNATED TRAFFIC LANES. THE CONTRACTOR SHALL NOT STORE ANY EQUIPMENT OR MATERIAL WITHIN THE PUBLIC RIGHT-OF-WAY. OVERNIGHT PARKING OF CONSTRUCTION VEHICLES ON PRIVATE PROPERTY IS THE SOLE RESPONSIBILITY OF THE CONTRACTOR.
10.

THE CONTRACTOR SHALL OBTAIN ALL THE NECESSARY PERMITS FOR THE PROJECT PRIOR TO COMMENCING CONSTRUCTION (I.E. BARRICADING, TOPSOIL DISTURBANCE, EXCAVATION, NPDES STORM WATER, SHORING ETC.).
11.

ALL PROPERTY CORNERS DESTROYED DURING CONSTRUCTION SHALL BE REPLACED AT THE CONTRACTOR'S EXPENSE. ALL PROPERTY CORNERS MUST BE RESET BY A REGISTERED LAND SURVEYOR.
12.

ALL BARRICADES AND CONSTRUCTION SIGNING SHALL CONFORM TO APPLICABLE SECTION OF THE "MANUAL ON UNIFORM TRAFFIC CONTROL DEVICES" (MUTCD), U.S. DEPARTMENT OF TRANSPORTATION, LATEST EDITION.

WORK LIMITS:

1.

THE WORK LIMITS ARE DEFINED AS SHOWN THROUGHOUT THESE CONTRACT DOCUMENTS.

WZTC NOTES:

1.

THE CONTRACTOR SHALL MAINTAIN TRAFFIC THROUGHOUT THE LENGTH OF THE CONTRACT IN ACCORDANCE WITH THE REQUIREMENTS OF SECTION 619 OF THE CURRENT STANDARD SPECIFICATIONS, THE MANUAL OF UNIFORM TRAFFIC CONTROL DEVICES (MUTCD) 11TH EDITION WITH THE NEW YORK SUPPLEMENT, THE TEMPORARY TRAFFIC CONTROL DETAILS IN THE PLANS AND PROPOSAL OF THIS CONTRACT, AND AS ORDERED BY THE ENGINEER (AOBE).
2.

FOR TYPICAL APPLICATIONS OF TRAFFIC CONTROL DEVICES IN CONSTRUCTION AREAS NOT SPECIFIED IN THE PLANS, THE PROVISIONS OF PART 6 OF THE MUTCD WITH THE NYS SUPPLEMENT SHALL APPLY. THE STANDARDS OF APPLICATION NOTED THEREIN AND ON THE PLANS ARE TO BE CONSIDERED MINIMUM STANDARDS.

UTILITY QUALITY LEVEL: QLC

FOUR SEPARATE QUALITY LEVELS OF SUBSURFACE UTILITY FACILITY INFORMATION ARE GENERALLY RECOGNIZED AND ARE AS FOLLOWS:

QUALITY LEVEL A (QLA): QUALITY LEVEL A IS THE HIGHEST DEGREE OF ACCURACY. THE INFORMATION SHOWN ON THE PLANS HAS BEEN OBTAINED BY THE ACTUAL EXPOSURE (OR VERIFICATION OF PREVIOUSLY EXPOSED AND SURVEYED UTILITY FACILITIES) OF SUBSURFACE UTILITIES, USING (TYPICALLY) MINIMALLY INTRUSIVE EXCAVATION EQUIPMENT TO DETERMINE THEIR PRECISE HORIZONTAL AND VERTICAL POSITIONS, AS WELL AS THEIR OTHER UTILITY FACILITY ATTRIBUTES. (SHOWN AS QLA)

QUALITY LEVEL B (QLB): QUALITY LEVEL B IS THE SECOND HIGHEST DEGREE OF ACCURACY. THE INFORMATION SHOWN ON THE PLANS HAS BEEN OBTAINED THROUGH THE APPLICATION OF APPROPRIATE SURFACE GEOPHYSICAL METHODS (I.E. UNDERGROUND CAMERAS, RADAR, SONAR, TONE OUTS, ETC.) TO IDENTIFY THE EXISTENCE AND APPROPRIATE HORIZONTAL POSITION OF SUBSURFACE UTILITY FACILITIES. QUALITY LEVEL B DATA ARE REPRODUCIBLE BY SURFACE GEOPHYSICS AT ANY POINT OF THEIR DEPICTION. THE INFORMATION WAS SURVEYED TO APPLICABLE TOLERANCES AND REDUCED ONTO THE PLANS. NO EXCAVATIONS WERE PERFORMED. (SHOWN AS QLB)

QUALITY LEVEL C (QLC): QUALITY LEVEL C IS THE THIRD HIGHEST DEGREE OF ACCURACY. THE INFORMATION SHOWN ON THE PLANS HAS BEEN OBTAINED BY SURVEYING AND PLOTTING VISIBLE ABOVE-GROUND UTILITY FEATURES AND BY USING PROFESSIONAL JUDGEMENT IN CORRELATING THIS INFORMATION TO QUALITY LEVEL D INFORMATION. (SHOWN AS QLC)

QUALITY LEVEL D (QLD): QUALITY LEVEL D IS THE LOWEST DEGREE OF ACCURACY. THE INFORMATION SHOWN ON THE PLANS WAS DERIVED SOLELY FROM EXISTING NYSDOT AND/OR UTILITY COMPANY RECORDS OR RECOLLECTIONS. (SHOWN AS QLD) THE QUALITY LEVEL DEFINITIONS SHALL BE PROVIDED IN THE GENERAL NOTES SECTION OF THE PLANS.

MILL & FILL, ROAD BASE ADDITIVES:

1.

THESE SPECIFICATIONS ARE IN DRAFT FORMAT AND WILL BE ADDED TO THE PLAN SET AT A LATER DATE.

LEGEND:

- 100-FT WETLAND BUFFER
- SILT FENCE
- SHALLOW STONE LINED
SWALE FLOW PATH
- FULL SWALE FLOW PATH
- LIMITS OF DISTURBANCE
- BOTTOM OF DITCH
- PROPOSED ROADWAY
- STONE FENCE
- GENERAL FENCE
- TREE LINE
- EXISTING ROADWAY
- PROPERTY LINE
- HIGHWAY BOUNDARY
- EXISTING PAVEMENT

PREPARED BY:
ON:

DRAFT



Engineering
& Design

www.colliersengineering.com

Copyright © 2025, Colliers Engineering & Design All Rights Reserved. This drawing and all the information contained herein is authorized for use only by the party for whom the services were contracted or to whom it is verified. This drawing may not be copied, reused, disclosed, distributed or relied upon for any other purpose without the express written consent of Colliers Engineering & Design.

IT IS A VIOLATION OF LAW FOR ANY PERSON, UNLESS THEY ARE ACTING UNDER THE DIRECTION OF A LICENSED PROFESSIONAL ENGINEER, ARCHITECT, LANDSCAPE ARCHITECT, OR LAND SURVEYOR, TO ALTER AN ITEM IN ANY WAY. IF AN ITEM BEARING THE STAMP OF A LICENSED PROFESSIONAL IS ALTERED, THE ALTERING ENGINEER, ARCHITECT, LANDSCAPE ARCHITECT, OR LAND SURVEYOR SHALL STAMP THE DOCUMENT AND INCLUDE THE NOTATION "ALTERED BY" FOLLOWED BY THEIR SIGNATURE, THE DATE OF SUCH ALTERATION, AND A SPECIFIC DESCRIPTION OF THE ALTERATION.

AS BUILT REVISIONS
DESCRIPTION OF WORK:

SIGNATURE

DATE

DOCUMENT NAME: C-NOTE

KILLEARN ROAD IMPROVEMENTS

KILLEARN ROAD

TOWN OF WASHINGTON

DUTCHESS COUNTY

STATE OF NEW YORK

PIN: N/A

BRIDGE/CULVERT: N/A



Engineering
& Design

ALBANY

18 Corporate Woods Blvd.
Suite 400
Albany, NY 12211

Phone: 518.459.3252

COLLIERS ENGINEERING & DESIGN,
ARCHITECTURE, LANDSCAPE ARCHITECTURE,
SURVEYING, P.E.

NOTE: ALL UTILITY LOCATIONS SHOWN ARE QUALITY LEVEL C (QLC).

NOTES

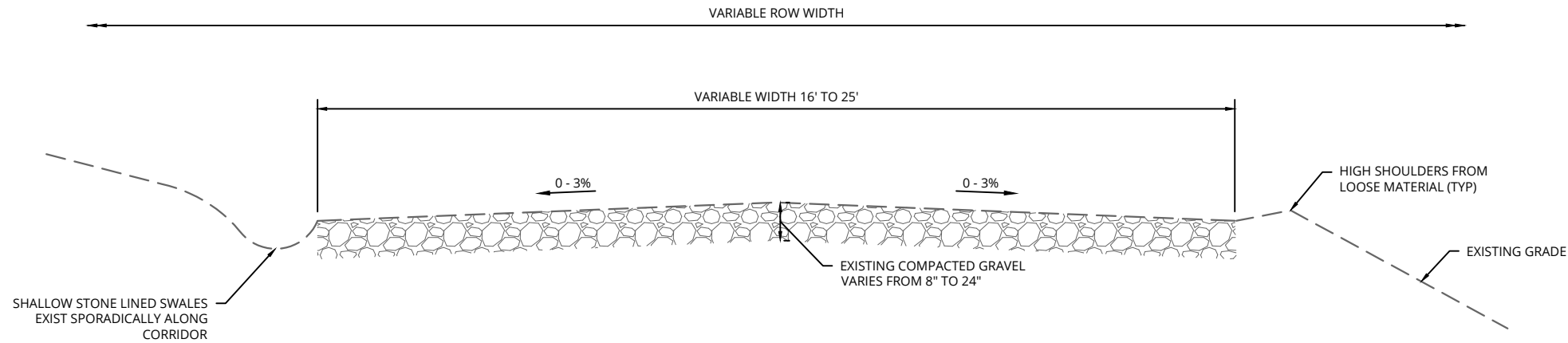
ALL DIMENSIONS IN US SURVEY FEET UNLESS OTHERWISE NOTED

MANAGER: DAF
DESIGNED BY: JWH
DRAWN BY: ASC
CHECKED BY: SNH

PROJECT NUMBER:
25006179G

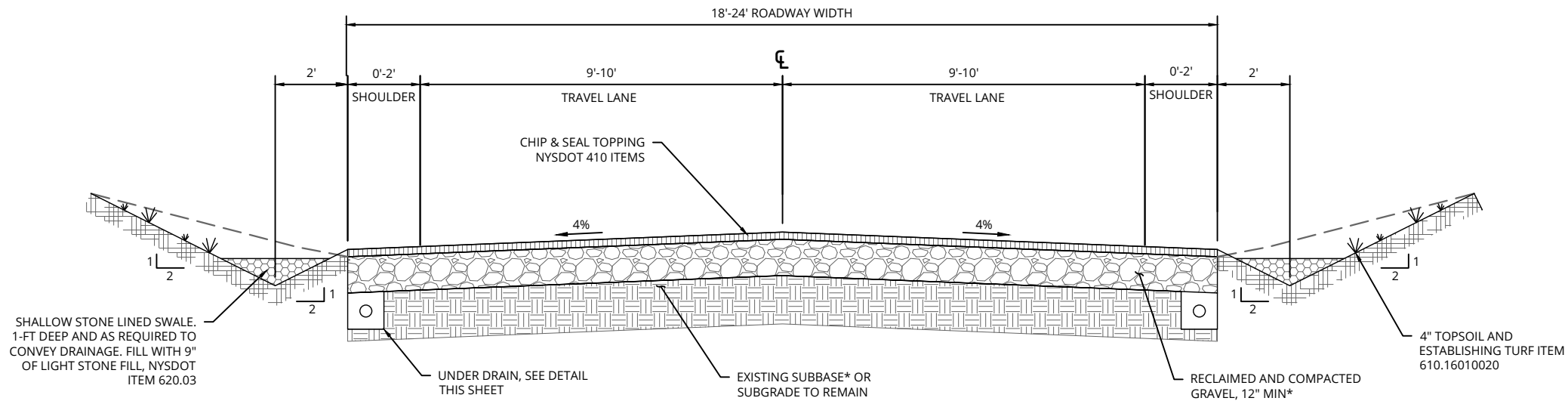
DRAWING No. NOTE-1
SHEET No. 02 OF 28

PRINT DATE: 6/16/2025



EXISTING KILLEARN RD. TYPICAL SECTION

SCALE: 1" = 4'



KILLEARN RD. TYPICAL RECLAMATION SECTION

SCALE: 1" = 4'

TYPICAL SECTION NOTES

1. KILLEARN ROAD HAS A VARIABLE WIDTH THROUGHOUT. THE CONTRACTOR SHALL WIDEN ROAD AND INSTALL SUBBASE ITEM 304.12 TO MEET MINIMUM WIDTHS WHERE ROAD IS NARROWER THAN THE TYPICAL SECTION. WHERE ROAD IS WIDER THAN THE TYPICAL SECTION, THE ENTIRE EXISTING WIDTH SHALL BE RECLAIMED. EXCESS WIDTH SHALL BE CONSIDERED SHOULDER FOR THE PURPOSE OF CUT/FILL AND SWALE INSTALLATION.
2. SEE PLANS FOR LOCATION OF FULL SWALE AND FILL EDGE TREATMENTS

PREPARED BY:
ON:

DRAFT



Engineering
& Design

www.colliersengineering.com

Copyright © 2025, Colliers Engineering & Design All Rights Reserved. This drawing and all the information contained herein is authorized for use only by the party for whom the services were contracted or to whom it is verified. This drawing may not be copied, reused, modified, distributed or relied upon for any other purpose without the express written consent of Colliers Engineering & Design.

IT IS A VIOLATION OF LAW FOR ANY PERSON, UNLESS THEY ARE ACTING UNDER THE DIRECTION OF A LICENSED PROFESSIONAL ENGINEER, ARCHITECT, LANDSCAPE ARCHITECT, OR LAND SURVEYOR, TO ALTER AN ITEM IN ANY WAY. IF AN ITEM BEARING THE STAMP OF A LICENSED PROFESSIONAL IS ALTERED, THE ALTERING ENGINEER, ARCHITECT, LANDSCAPE ARCHITECT, OR LAND SURVEYOR SHALL STAMP THE DOCUMENT AND INCLUDE THE NOTATION "ALTERED BY" FOLLOWED BY THEIR SIGNATURE, THE DATE OF SUCH ALTERATION, AND A SPECIFIC DESCRIPTION OF THE ALTERATION.

AS BUILT REVISIONS
DESCRIPTION OF WORK:

SIGNATURE

DATE

DOCUMENT NAME: C-TYPS

KILLEARN ROAD IMPROVEMENTS

KILLEARN ROAD

TOWN OF WASHINGTON

DUTCHESS COUNTY

STATE OF NEW YORK

PIN: N/A

BRIDGE/CULVERT: N/A



Engineering
& Design

ALBANY

18 Corporate Woods Blvd.
Suite 400

Albany, NY 12211

Phone: 518.459.3252

COLLIERS ENGINEERING & DESIGN,
ARCHITECTURE, LANDSCAPE ARCHITECTURE,
SURVEYING, P.C.

NOTE: ALL UTILITY LOCATIONS SHOWN ARE QUALITY LEVEL C (QLC).

TYPICAL SECTION
(1 OF 2)

ALL DIMENSIONS IN US SURVEY FEET UNLESS OTHERWISE NOTED

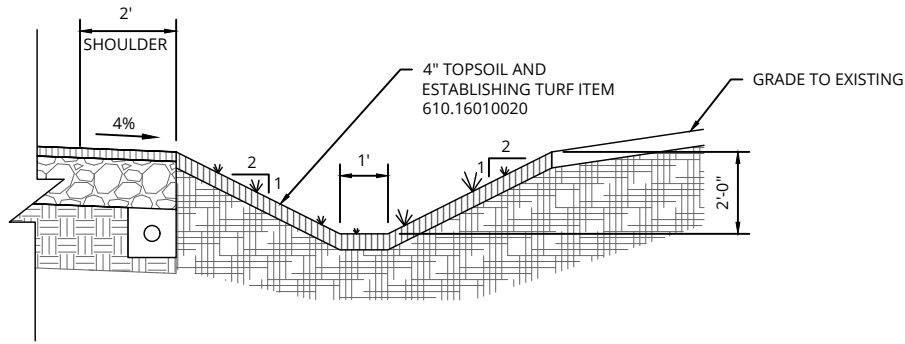
MANAGER: DAF DESIGNED BY: JWH DRAWN BY: ASC CHECKED BY: SNH

PROJECT NUMBER:
25006179G

DRAWING No. TYP-1

SHEET No. 3 OF 28

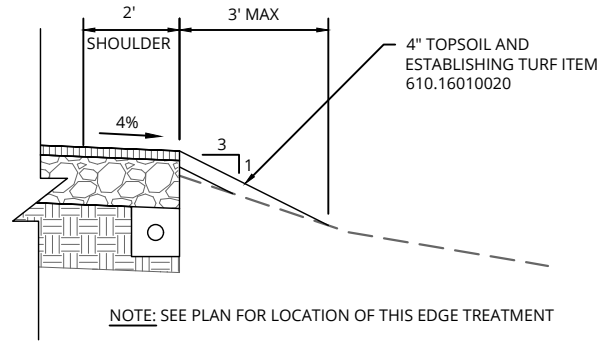
PRINT DATE: 6/16/2025



NOTE: SEE PLAN FOR LOCATION OF THIS EDGE TREATMENT

FULL SWALE SECTION
SCALE: 1" = 4'

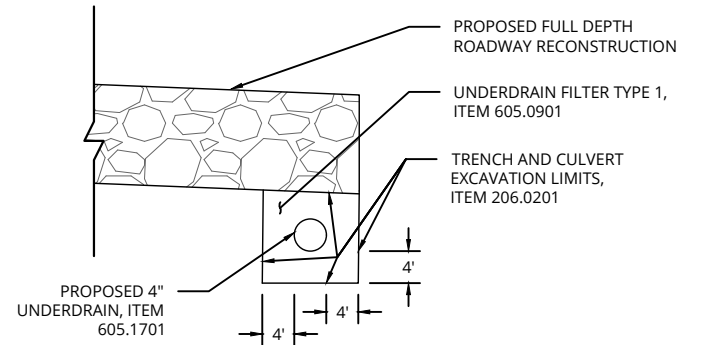
(A)



NOTE: SEE PLAN FOR LOCATION OF THIS EDGE TREATMENT

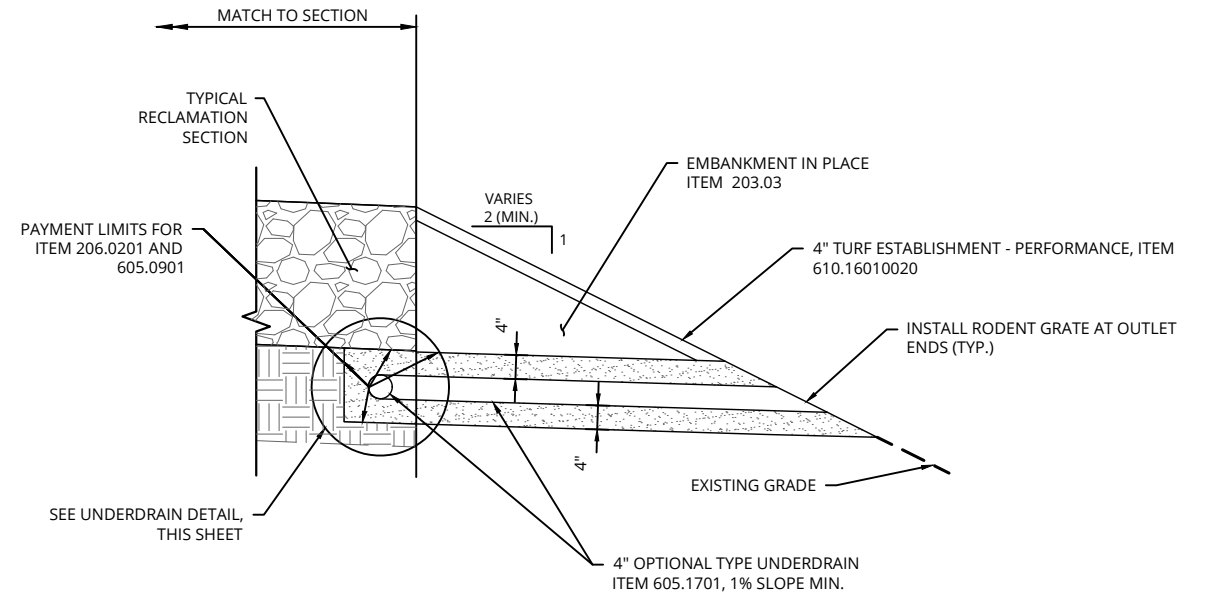
FILL SECTION
SCALE: 1" = 4'

(B)



NOTES:
1. SEE UNDERDRAIN OUTLET DETAIL

UNDER DRAIN DETAIL
SCALE: 1" = 2'



NOTE: CONTRACTOR TO DAYLIGHT UNDERDRAIN IN LOCATIONS WHERE SIDE SLOPES ALLOW, OR INTO SWALES

UNDERDRAIN OUTLET DETAIL
N.T.S.

PREPARED BY:
ON:

DRAFT



Engineering
& Design

www.colliersengineering.com

Copyright © 2025, Colliers Engineering & Design All Rights Reserved. This drawing and all the information contained herein is authorized for use only by the party for whom the services were contracted or to whom it is verified. This drawing may not be copied, reused, disclosed, distributed or relied upon for any other purpose without the express written consent of Colliers Engineering & Design.

IT IS A VIOLATION OF LAW FOR ANY PERSON, UNLESS THEY ARE ACTING UNDER THE DIRECTION OF A LICENSED PROFESSIONAL ENGINEER, ARCHITECT, LANDSCAPE ARCHITECT, OR LAND SURVEYOR, TO ALTER AN ITEM IN ANY WAY. IF AN ITEM BEARING THE STAMP OF A LICENSED PROFESSIONAL IS ALTERED, THE ALTERING ENGINEER, ARCHITECT, LANDSCAPE ARCHITECT, OR LAND SURVEYOR SHALL STAMP THE DOCUMENT AND INCLUDE THE NOTATION "ALTERED BY" FOLLOWED BY THEIR SIGNATURE, THE DATE OF SUCH ALTERATION, AND A SPECIFIC DESCRIPTION OF THE ALTERATION.

AS BUILT REVISIONS
DESCRIPTION OF WORK:

SIGNATURE DATE

DOCUMENT NAME: C-TYPS

KILLEARN ROAD IMPROVEMENTS

KILLEARN ROAD
TOWN OF WASHINGTON
DUTCHESS COUNTY
STATE OF NEW YORK

PIN: N/A BRIDGE/CULVERT: N/A



Engineering
& Design

ALBANY
18 Corporate Woods Blvd.
Suite 400
Albany, NY 12211
Phone: 518.459.3252
COLLIERS ENGINEERING & DESIGN
ARCHITECTURE, LANDSCAPE ARCHITECTURE,
SURVEYING, ETC.

NOTE: ALL UTILITY LOCATIONS SHOWN ARE QUALITY LEVEL C (QLC).

TYPICAL SECTION
(2 OF 2)

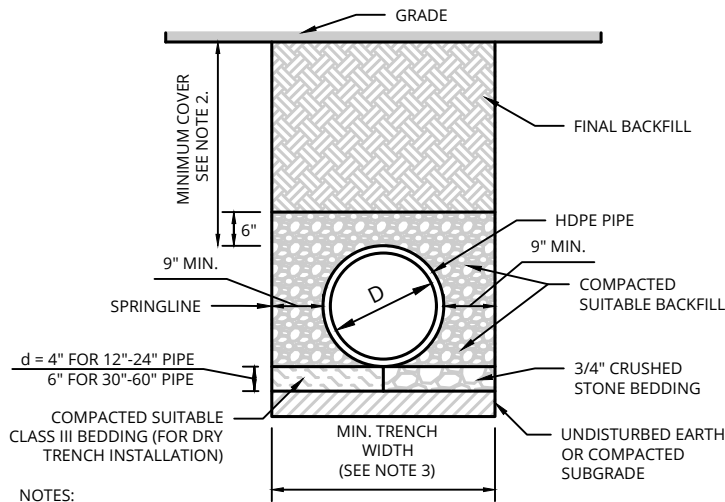
ALL DIMENSIONS IN US SURVEY FEET UNLESS OTHERWISE NOTED

MANAGER: DAF DESIGNED BY: JWH DRAWN BY: ASC CHECKED BY: SNH

PROJECT NUMBER:
25006179G

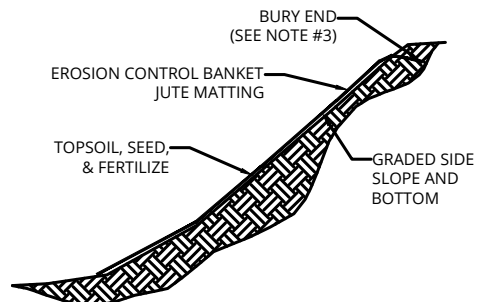
DRAWING No. TYP5-2
SHEET No. 4 OF 28

PRINT DATE: 6/16/2025



- NOTES:
1. ALL PIPE SYSTEMS AND BACKFILL SHALL BE INSTALLED IN ACCORDANCE WITH ASTM D2321.
 2. MINIMUM COVER FOR HDPE PIPES IS 12" UP TO 48" DIAMETER PIPE AND 24" OF COVER FOR UP TO 60" DIAMETER PIPE. PIPE COVER IS MEASURED FROM TOP OF PIPE TO THE BOTTOM OF FLEXIBLE PAVEMENT, OR TO THE TOP OF RIGID PAVEMENT, OR TO THE GROUND SURFACE.
 3. MINIMUM TRENCH WIDTH PER MANUFACTURER'S RECOMMENDATIONS.

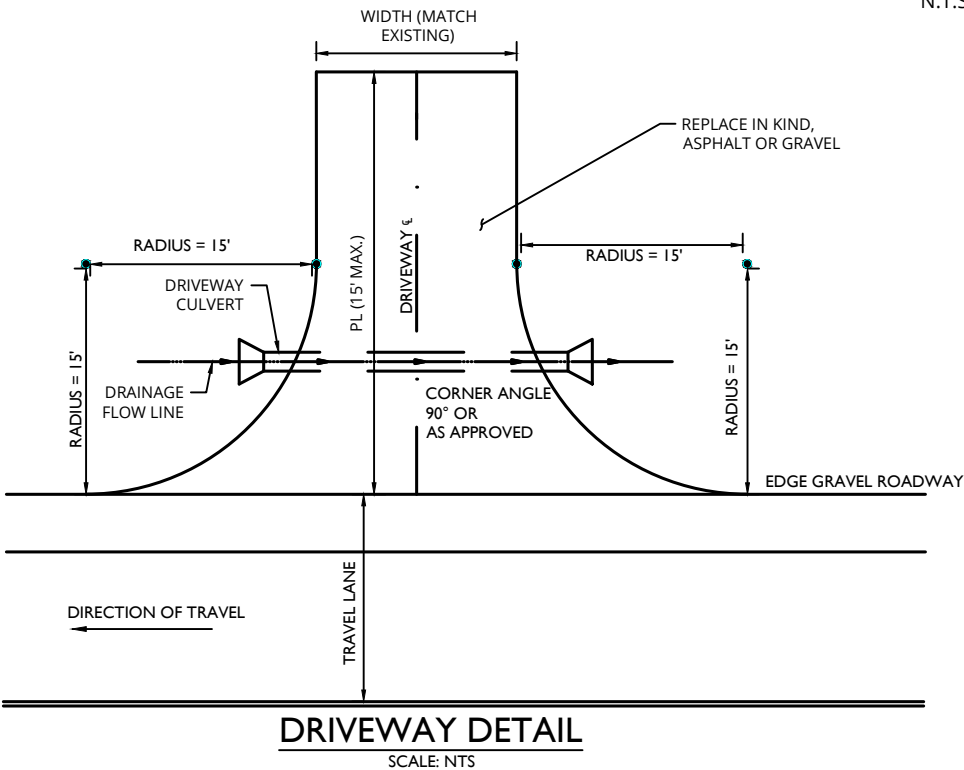
HDPE STORM PIPE BEDDING DETAIL
N.T.S.



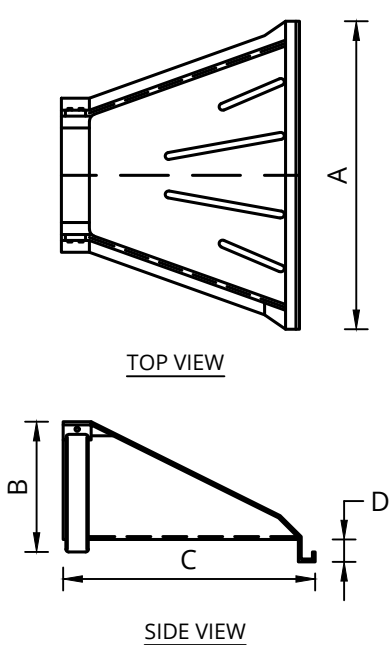
- NOTES
1. PREPARE SOIL BEFORE INSTALLING BLANKETS, INCLUDING APPLICATION OF TOPSOIL, FERTILIZER, AND SEED.
 2. ROLL BLANKETS IN DIRECTION OF WATER FLOW.
 3. REFER TO MANUFACTURERS SPECIFICATIONS FOR BLANKET INSTALLATION, ANCHORING AND STAPLING REQUIREMENTS.
 4. EROSION CONTROL BLANKET SHALL BE JUTE MATTING, FROM NYSDOT APPROVED MATERIAL, EQUIPMENT, METHODS AND PROCEDURES.
 5. NO UV DEGRADEABLE MATERIAL. 100% ORGANIC ONLY

SLOPE STABILIZATION DETAIL
PAID UNDER ITEM 209.1803
N.T.S.

PREPARED BY:
ON:

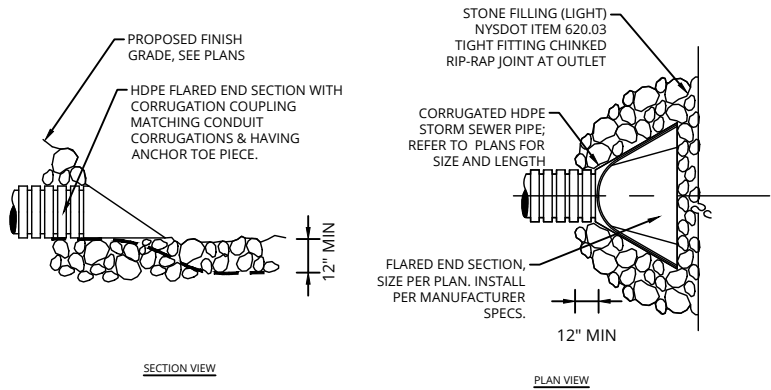


DRIVEWAY DETAIL
SCALE: NTS

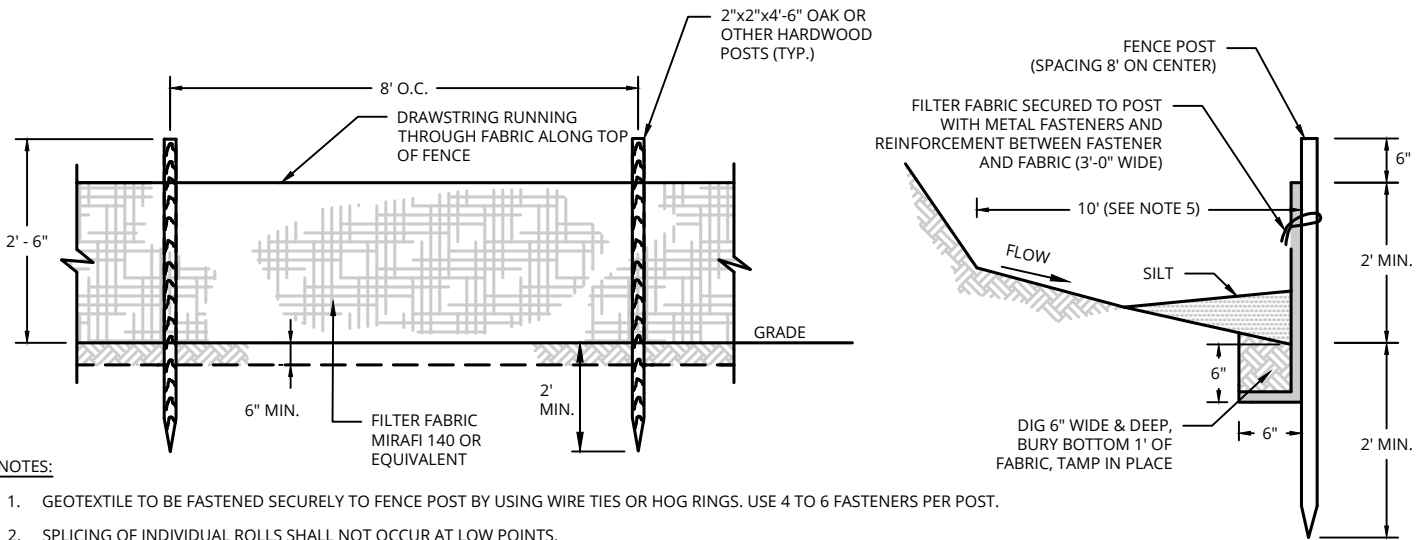


GALVANIZED STEEL FLARED END SECTION DETAIL
PAID UNDER ITEM 603 ITEMS
N.T.S.

PIPE DIAMETER (INCHES)					
DIMENSION	12	15	18	24	30
A	42	46	54	64	88
B	14.5	24.5	29	37	36
C	33	45.5	55	65	63.5
D	6	6	6	6	6



FLARED END SECTION TO HDPE PIPE DETAIL
N.T.S.



- NOTES:
1. GEOTEXTILE TO BE FASTENED SECURELY TO FENCE POST BY USING WIRE TIES OR HOG RINGS. USE 4 TO 6 FASTENERS PER POST.
 2. SPLICING OF INDIVIDUAL ROLLS SHALL NOT OCCUR AT LOW POINTS.
 3. ALL SILT FENCE TO BE INSPECTED AND REMEDIAL MAINTENANCE PERFORMED BY THE CONTRACTOR WITHIN 24 HOURS AFTER EACH RAINFALL. REMOVE THE SILT ACCUMULATION WHEN IT REACHES 1/3 OF THE FENCE FABRIC HEIGHT.
 4. FOR EVERY 100 FEET OF SILT FENCE, OR 1/4 ACRE OF DRAINAGE AREA, PROVIDE AN OVERFLOW POINT TO REDUCE PONDING IN FRONT OF THE FENCE.
 5. IF SPACE PERMITTED, LOCATE SILT FENCE 10' AWAY FROM TOE OF SLOPE IF THE SLOPE IS STEEPER THAN 1:1.

SILT FENCE DETAIL
PAID UNDER ITEM 209.13
N.T.S.

DRAFT



Engineering
& Design

www.colliersengineering.com

Copyright © 2025, Colliers Engineering & Design All Rights Reserved. This drawing and all the information contained herein is authorized for use only by the party for whom the services were rendered or to whom it is verified. This drawing may not be copied, reused, modified, distributed or relied upon for any other purpose without the express written consent of Colliers Engineering & Design.

IT IS A VIOLATION OF LAW FOR ANY PERSON, UNLESS THEY ARE ACTING UNDER THE DIRECTION OF A LICENSED PROFESSIONAL ENGINEER, ARCHITECT, LANDSCAPE ARCHITECT, OR LAND SURVEYOR, TO ALTER AN ITEM IN ANY WAY. IF AN ITEM BEARING THE STAMP OF A LICENSED PROFESSIONAL IS ALTERED, THE ALTERING ENGINEER, ARCHITECT, LANDSCAPE ARCHITECT, OR LAND SURVEYOR SHALL STAMP THE DOCUMENT AND INCLUDE THE NOTATION "ALTERED BY" FOLLOWED BY THEIR SIGNATURE, THE DATE OF SUCH ALTERATION, AND A SPECIFIC DESCRIPTION OF THE ALTERATION.

AS BUILT REVISIONS
DESCRIPTION OF WORK:

SIGNATURE DATE

DOCUMENT NAME: C-DTLS

KILLEARN ROAD IMPROVEMENTS

KILLEARN ROAD

TOWN OF WASHINGTON

DUTCHESS COUNTY

STATE OF NEW YORK

PIN: N/A

BRIDGE/CULVERT: N/A



ALBANY
18 Corporate Woods Blvd.
Suite 400
Albany, NY 12211
Phone: 518.459.3252
COLLIERS ENGINEERING & DESIGN,
ARCHITECTURE, LANDSCAPE ARCHITECTURE,
LAND SURVEYING, P.C.

NOTE: ALL UTILITY LOCATIONS SHOWN ARE QUALITY LEVEL C (QLC).

DETAILS

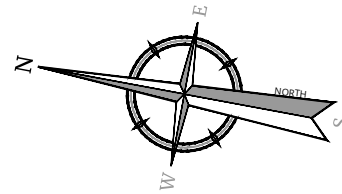
ALL DIMENSIONS IN US SURVEY FEET UNLESS OTHERWISE NOTED

MANAGER: DAF DESIGNED BY: JWH DRAWN BY: ASC CHECKED BY: SNH

PROJECT NUMBER:
25006179G

DRAWING No. DTLS-1
SHEET No. 05 OF 28

PRINT DATE: 6/16/2025



Lands Now or Formerly of
KILLEARN PROPERTIES LLC
Book 22021 Page 50132
Tax Parcel No. 135889-6864-00-281628

Lot No. 3A
Filed Map No. 5083

Killearn Rd

PAVEMENT ENDS

LOD

LOD

LOD

LOD

LOD

LOD

LOD

LOD

LOD

LOD

LOD

LOD

LOD

LOD

LOD

LOD

LOD

LOD

LOD

LOD

LOD

LOD

LOD

LOD

LOD

LOD

LOD

LOD

LOD

LOD

LOD

LOD

LOD

LOD

LOD

LOD

LOD

LOD

LOD

LOD

LOD

LOD

LOD

LOD

LOD

LOD

LOD

LOD

LOD

LOD

LOD

LOD

LOD

LOD

LOD

LOD

LOD

LOD

LOD

LOD

LOD

LOD

LOD

LOD

LOD

LOD

LOD

LOD

LOD

LOD

LOD

LOD

LOD

LOD

LOD

LOD

LOD

LOD

LOD

LOD

LOD

LOD

LOD

LOD

LOD

LOD

LOD

LOD

LOD

LOD

LOD

LOD

LOD

LOD

LOD

LOD

LOD

LOD

LOD

LOD

LOD

LOD

LOD

LOD

LOD

LOD

LOD

LOD

LOD

LOD

LOD

LOD

LOD

LOD

LOD

LOD

LOD

LOD

LOD

LOD

LOD

LOD

LOD

LOD

LOD

LOD

LOD

LOD

LOD

LOD

LOD

LOD

LOD

LOD

LOD

LOD

LOD

LOD

LOD

LOD

LOD

LOD

LOD

LOD

LOD

LOD

LOD

LOD

LOD

LOD

LOD

LOD

LOD

LOD

LOD

LOD

LOD

LOD

LOD

LOD

LOD

LOD

LOD

LOD

LOD

LOD

LOD

LOD

LOD

LOD

LOD

LOD

LOD

LOD

LOD

LOD

LOD

LOD

LOD

LOD

LOD

LOD

LOD

LOD

LOD

LOD

LOD

LOD

LOD

LOD

LOD

LOD

LOD

LOD

LOD

LOD

LOD

LOD

LOD

LOD

LOD

LOD

LOD

LOD

LOD

LOD

LOD

LOD

LOD

LOD

LOD

LOD

LOD

LOD

LOD

LOD

LOD

LOD

LOD

LOD

LOD

LOD

LOD

LOD

LOD

LOD

LOD

LOD

LOD

LOD

LOD

LOD

LOD

LOD

LOD

LOD

LOD

LOD

LOD

LOD

LOD

LOD

LOD

LOD

LOD

LOD

LOD

LOD

LOD

LOD

LOD

LOD

LOD

LOD

LOD

LOD

LOD

LOD

LOD

LOD

LOD

LOD

LOD

LOD

LOD

LOD

LOD

LOD

LOD

LOD

LOD

LOD

LOD

LOD

LOD

LOD

LOD

LOD

LOD

LOD

LOD

LOD

LOD

LOD

LOD

LOD

LOD

LOD

LOD

LOD

LOD

LOD

LOD

LOD

LOD

LOD

LOD

LOD

LOD

LOD

LOD

LOD

LOD

LOD

LOD

LOD

LOD

LOD

LOD

LOD

LOD

LOD

LOD

LOD

LOD

LOD

LOD

LOD

LOD

LOD

LOD

LOD

LOD

LOD

LOD

LOD

LOD

LOD

LOD

LOD

LOD

LOD

LOD

LOD

LOD

LOD

LOD

LOD

LOD

LOD

LOD

LOD

LOD

LOD

LOD

LOD

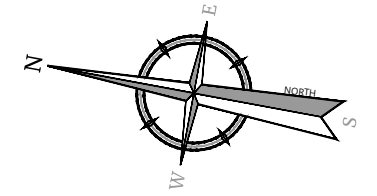
MATCHLINE (SEE GENERAL PLANS SHEET 1 OF 23)

Lands Now or Formerly of
CHRISTOPHER L. MANN AND
CLAIRE SVTLIK MANN
Book 22017 Page 385
Tax Parcel No. 135889-6864-00-388619
Lot No. 3
Filed Map No. 10571
Killearn Rd

Lands Now or Formerly of
DAVID CYNN AND KIM ALICE
Book 22006 Page 5414
Tax Parcel No. 135889-6864-00-307553

Lot No. 4
Filed Map No. 10571

596 Killearn Rd



MATCHLINE (SEE GENERAL PLANS SHEET 3 OF 23)

PROPOSED SHALLOW
SWALE (TYP)

EDGE OF GRAVEL
ROAD

Lands Now or Formerly of
KILLEARN PROPERTIES LLC
Book 22021 Page 50132
Tax Parcel No. 135889-6864-00-255600

Lot No. 3
Filed Map No. 5083

623 Killearn Rd

Lands Now or Formerly of
JAMES V. VOORHEIS III AND NELLI
VOORHIES
Book 22024 Page 2498
Tax Parcel No. 135889-6864-00-159570
Lot No. 16
Filed Map No. 9718
150 Hoxie Rd

PROPOSED LIGHT
STONE FILL, TYP.

PROPOSED SILT
FENCE (TYP)

PROPOSED 15"
DRIVEWAY CULVERT

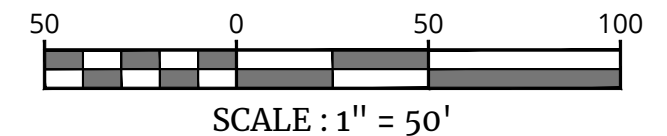
LIMIT OF
DISTURBANCE

Lands Now or Formerly of
CHRISTOPHER L. MANN AND
CALIRE SVETILK MANN
Book 22022 Page 53763
Tax Parcel No. 135889-6864-00-251485

593 Killearn Rd

GENERAL PLANS

SCALE: 1" = 50'



PREPARED BY:
ON:

DRAFT



Engineering
& Design

www.colliersengineering.com

Copyright © 2025, Colliers Engineering & Design All Rights Reserved. This drawing and all the information contained herein is authorized for use only by the party for whom the services were contracted or to whom it is verified. This drawing may not be copied, reused, altered, distributed or relied upon for any other purpose without the express written consent of Colliers Engineering & Design.

IT IS A VIOLATION OF LAW FOR ANY PERSON, UNLESS THEY ARE ACTING UNDER THE DIRECTION OF A LICENSED PROFESSIONAL ENGINEER, ARCHITECT, LANDSCAPE ARCHITECT, OR LAND SURVEYOR, TO ALTER AN ITEM IN ANY WAY. IF AN ITEM BEARING THE STAMP OF A LICENSED PROFESSIONAL IS ALTERED, THE ALTERING ENGINEER, ARCHITECT, LANDSCAPE ARCHITECT, OR LAND SURVEYOR SHALL STAMP THE DOCUMENT AND INCLUDE THE NOTATION "ALTERED BY" FOLLOWED BY THEIR SIGNATURE, THE DATE OF SUCH ALTERATION, AND A SPECIFIC DESCRIPTION OF THE ALTERATION.

AS BUILT REVISIONS
DESCRIPTION OF WORK:

SIGNATURE
DOCUMENT NAME: C-GNPS

DATE

KILLEARN ROAD IMPROVEMENTS

KILLEARN ROAD
TOWN OF WASHINGTON
DUTCHESS COUNTY
STATE OF NEW YORK

PIN: N/A

BRIDGE/CULVERT: N/A



Engineering
& Design

ALBANY
18 Corporate Woods Blvd.
Suite 400
Albany, NY 12211
Phone: 518.459.3252
COLLIERS ENGINEERING & DESIGN,
ARCHITECTURE, LANDSCAPE ARCHITECTURE,
SURVEYING, P.E.

NOTE: ALL UTILITY LOCATIONS SHOWN ARE QUALITY LEVEL C (QLC).

GENERAL PLANS (SHEET 2 OF 23)

ALL DIMENSIONS IN US SURVEY FEET UNLESS OTHERWISE NOTED

MANAGER: DAF
DESIGNED BY: JWH
DRAWN BY: ASC
CHECKED BY: SNH

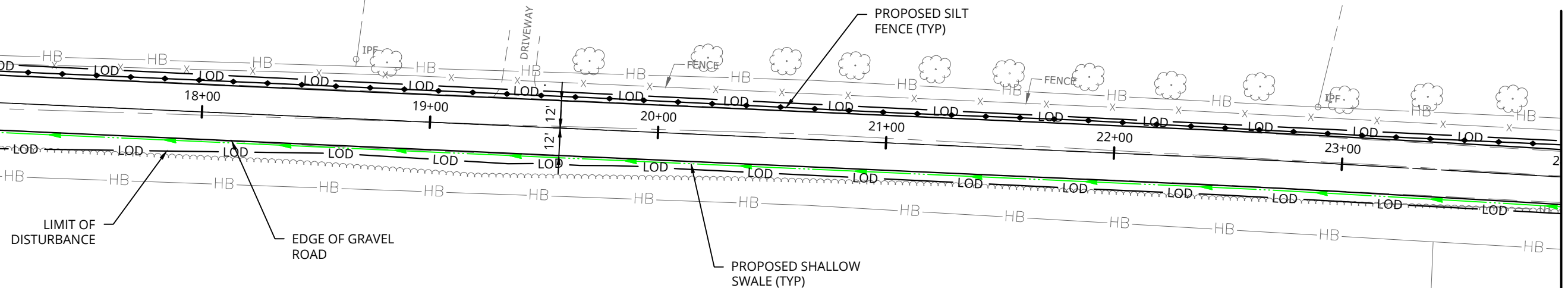
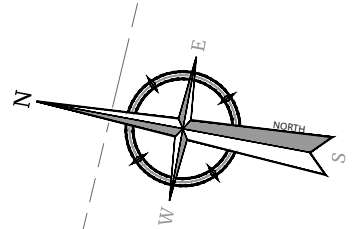
PROJECT NUMBER:
25006179G

DRAWING No. GNPS-2
SHEET No. 07 OF 28

PRINT DATE: 6/16/2025

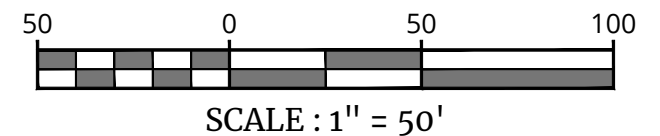
Lot No. 4
Filed Map No. 10571
596 Killearn Rd

Lot No. 5
Filed Map No. 10571
570 Killearn Rd



MA1CHLINE (SEE GENERAL PLANS SHEET 4 OF 23)

GENERAL PLANS
SCALE: 1" = 50'



PREPARED BY:
ON:
DRAFT

Colliers Engineering & Design
www.colliersengineering.com

IT IS A VIOLATION OF LAW FOR ANY PERSON, UNLESS THEY ARE ACTING UNDER THE DIRECTION OF A LICENSED PROFESSIONAL ENGINEER, ARCHITECT, LANDSCAPE ARCHITECT, OR LAND SURVEYOR, TO ALTER AN ITEM IN ANY WAY. IF AN ITEM BEARING THE STAMP OF A LICENSED PROFESSIONAL IS ALTERED, THE ALTERING ENGINEER, ARCHITECT, LANDSCAPE ARCHITECT, OR LAND SURVEYOR SHALL STAMP THE DOCUMENT AND INCLUDE THE NOTATION "ALTERED BY" FOLLOWED BY THEIR SIGNATURE, THE DATE OF SUCH ALTERATION, AND A SPECIFIC DESCRIPTION OF THE ALTERATION.

AS BUILT REVISIONS DESCRIPTION OF WORK:	
_____ SIGNATURE	_____ DATE
DOCUMENT NAME: C-GNPS	

KILLEARN ROAD IMPROVEMENTS	
KILLEARN ROAD	
TOWN OF WASHINGTON	
DUTCHESS COUNTY	
STATE OF NEW YORK	
PIN: N/A	BRIDGE/CULVERT: N/A

Colliers
Engineering
& Design
ALBANY
18 Corporate Woods Blvd
Suite 400
Albany, NY 12211
Phone: 518.459.3252
COLLIERS ENGINEERING & DESIGN,
ARCHITECTURE, LANDSCAPE ARCHITECTURE,
SURVEYING, C.T., P.A.

NOTE: ALL UTILITY LOCATIONS SHOWN ARE QUALITY LEVEL C (QLC).

GENERAL PLANS
(SHEET 3 OF 23)

ALL DIMENSIONS IN US SURVEY FEET UNLESS OTHERWISE NOTED

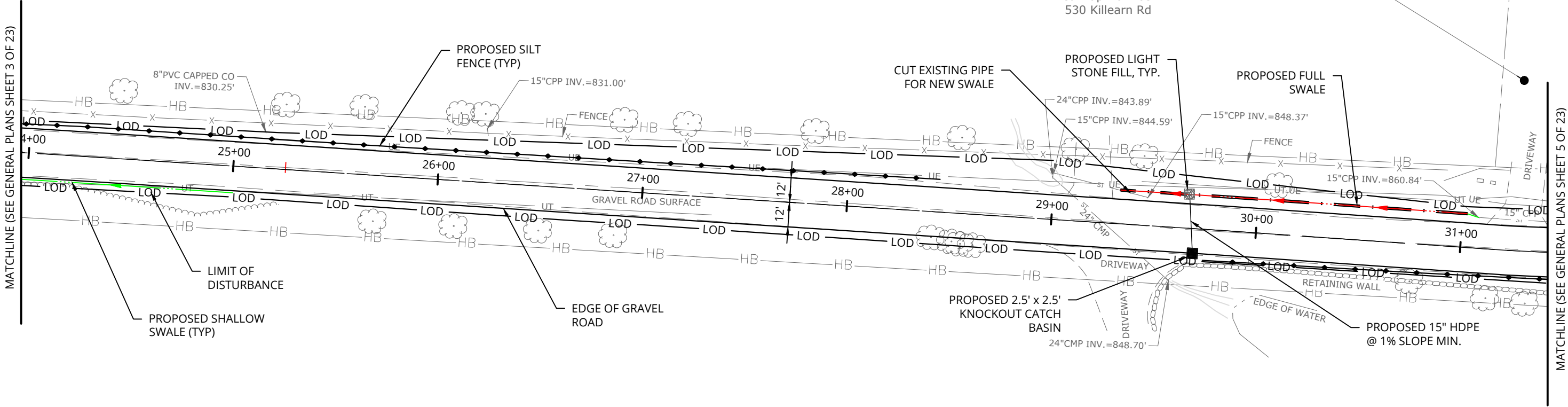
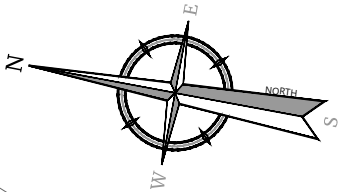
MANAGER: DAF	DESIGNED BY: JWH	DRAWN BY: ASC	CHECKED BY: SNH
PROJECT NUMBER: 25006179G			
DRAWING No.		GNPS-3	
SHEET No.		08 OF 28	
PRINT DATE: 6/16/2025			

Lands Now or Formerly of
BWP539 LLC
Book 22024 Page 1490
Tax Parcel No. 135889-6864-00-343420

Lot No. 6
Filed Map No. 10571

Killearn Rd

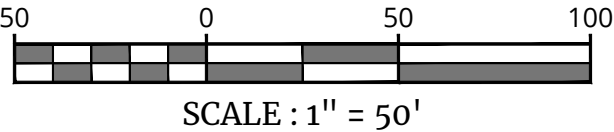
Lands Now or Formerly of
ANURADHA AIYENGAR AND NITIN SHARMA
Book 22022 Page 1185
Tax Parcel No. 135889-6864-00-467450
Lot No. 7
Filed Map No. 10571
530 Killearn Rd



Lands Now or Formerly of
BWP539 LLC
Book 22024 Page 1490
Tax Parcel No. 135889-6864-00-262395

Lot No. 2
Filed Map No. 4869
525-545 Killearn Rd

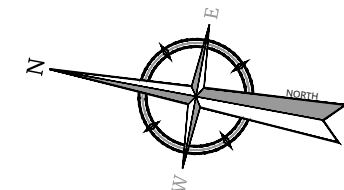
GENERAL PLANS
SCALE: 1" = 50'



PREPARED BY:
ON:

DRAFT

 Colliers Engineering & Design www.colliersengineering.com <small>Copyright © 2025, Colliers Engineering & Design All Rights Reserved. This drawing and all the information contained herein is authorized for use only by the party for whom the services were contracted or to whom it is verified. This drawing may not be copied, reused, altered, distributed or relied upon for any other purpose without the express written consent of Colliers Engineering & Design.</small>	IT IS A VIOLATION OF LAW FOR ANY PERSON, UNLESS THEY ARE ACTING UNDER THE DIRECTION OF A LICENSED PROFESSIONAL ENGINEER, ARCHITECT, LANDSCAPE ARCHITECT, OR LAND SURVEYOR, TO ALTER AN ITEM IN ANY WAY. IF AN ITEM BEARING THE STAMP OF A LICENSED PROFESSIONAL IS ALTERED, THE ALTERING ENGINEER, ARCHITECT, LANDSCAPE ARCHITECT, OR LAND SURVEYOR SHALL STAMP THE DOCUMENT AND INCLUDE THE NOTATION "ALTERED BY" FOLLOWED BY THEIR SIGNATURE, THE DATE OF SUCH ALTERATION, AND A SPECIFIC DESCRIPTION OF THE ALTERATION.	AS BUILT REVISIONS DESCRIPTION OF WORK: <div>SIGNATURE _____ DATE _____</div> <div>DOCUMENT NAME: C-GNPS</div>	KILLEARN ROAD IMPROVEMENTS <div>KILLEARN ROAD</div> <div>TOWN OF WASHINGTON</div> <div>DUTCHESS COUNTY</div> <div>STATE OF NEW YORK</div> <div>PIN: N/A</div> <div>BRIDGE/CULVERT: N/A</div>	 Colliers Engineering & Design ALBANY 18 Corporate Woods Blvd. Suite 400 Albany, NY 12211 Phone: 518.459.3252 <small>COLLIERS ENGINEERING & DESIGN, ARCHITECTURE, LANDSCAPE ARCHITECTURE, SURVEYING, P.E.</small>	NOTE: ALL UTILITY LOCATIONS SHOWN ARE QUALITY LEVEL C (QLC).	MANAGER: DAF DESIGNED BY: JWH DRAWN BY: ASC CHECKED BY: SNH PROJECT NUMBER: 25006179G DRAWING No. GNPS-4 SHEET No. 09 OF 28 PRINT DATE: 6/16/2025	



Lands Now or Formerly of
ANURADHA AIYENGAR AND NITIN SHARMA
Book 22022 Page 1185
Tax Parcel No. 135889-6864-00-467450
Lot No. 7
Filed Map No. 10571
530 Killearn Rd

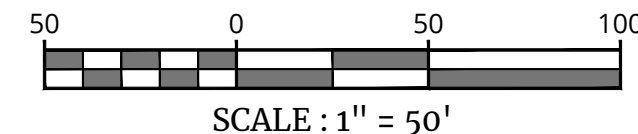
Lands Now or Formerly of
**DOUGLAS PROPP, JAMES S. PROPP
AND RODNEY M. PROPP**
Book 22002 Page 10431
Tax Parcel No. 135889-6864-00-407349

Lot No. 1
Filed Map No. 9282
Killearn Rd

Lands Now or Formerly of
BWP539 LLC
Book 22024 Page 1490
Tax Parcel No. 135889-6864-00-262395
Lot No. 2
Filed Map No. 4869
525-545 Killearn Rd

LANDS NOW OR FORMERLY OF
BWP539 LLC
BOOK 1490 PAGE 1490
TAX PARCEL NO. 135889-6864-00-194358
LOT NO. 8
Filed Map No. 9718
KILLEARN RD

GENERAL PLANS
SCALE: 1" = 50'



PREPARED BY:
ON:

DRAFT



**Engineering
& Design**

www.colliersengineering.com

Copyright © 2025, Colliers Engineering & Design All Rights Reserved. This drawing and all the information contained herein is authorized for use only by the party for whom the services were contracted or to whom it is verified. This drawing may not be copied, reused, modified, distributed or relied upon for any other purpose without the express written consent of Colliers Engineering & Design.

IT IS A VIOLATION OF LAW FOR ANY PERSON, UNLESS THEY ARE ACTING UNDER THE DIRECTION OF A LICENSED PROFESSIONAL ENGINEER, ARCHITECT, LANDSCAPE ARCHITECT, OR LAND SURVEYOR, TO ALTER AN ITEM IN ANY WAY. IF AN ITEM BEARING THE STAMP OF A LICENSED PROFESSIONAL IS ALTERED, THE ALTERING ENGINEER, ARCHITECT, LANDSCAPE ARCHITECT, OR LAND SURVEYOR SHALL STAMP THE DOCUMENT AND INCLUDE THE NOTATION "ALTERED BY" FOLLOWED BY THEIR SIGNATURE, THE DATE OF SUCH ALTERATION, AND A SPECIFIC DESCRIPTION OF THE ALTERATION.

AS BUILT REVISIONS
DESCRIPTION OF WORK:

SIGNATURE

DATE

DOCUMENT NAME: C-GNPS

KILLEARN ROAD IMPROVEMENTS

KILLEARN ROAD
TOWN OF WASHINGTON
DUTCHESS COUNTY
STATE OF NEW YORK

PIN: N/A

BRIDGE/CULVERT: N/A



**Engineering
& Design**

ALBANY
18 Corporate Woods Blvd.
Suite 400
Albany, NY 12211
Phone: 518.459.3252
COLLIERS ENGINEERING & DESIGN
ARCHITECTURE, LANDSCAPE ARCHITECTURE,
SURVEYING, P.E.

NOTE: ALL UTILITY LOCATIONS SHOWN ARE QUALITY LEVEL C (QLC).

**GENERAL PLANS
(SHEET 5 OF 23)**

ALL DIMENSIONS IN US SURVEY FEET UNLESS OTHERWISE NOTED

MANAGER: DAF DESIGNED BY: JWH DRAWN BY: ASC CHECKED BY: SNH

PROJECT NUMBER:
25006179G

DRAWING No. GNPS-5
SHEET No. 10 OF 28

PRINT DATE: 6/16/2025

Lands Now or Formerly of
DOUGLAS PROPP, JAMES S. PROPP
AND RODNEY M. PROPP
Book 22002 Page 10431
Tax Parcel No. 135889-6864-00-407349

Lot No. 1
Filed Map No. 9282

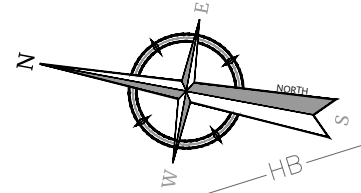
Killearn Rd

Lands Now or Formerly of
KILLEARN LLC
Book 22023 Page 3023 Tax Parcel No.
135889-6864-00-510259
Lot No. 2
Filed Map No. 9704
Killearn Rd

Lands Now or Formerly of
EVE T. PROPP
Book 22003 Page 3179
Tax Parcel No. 135889-6864-00-415228

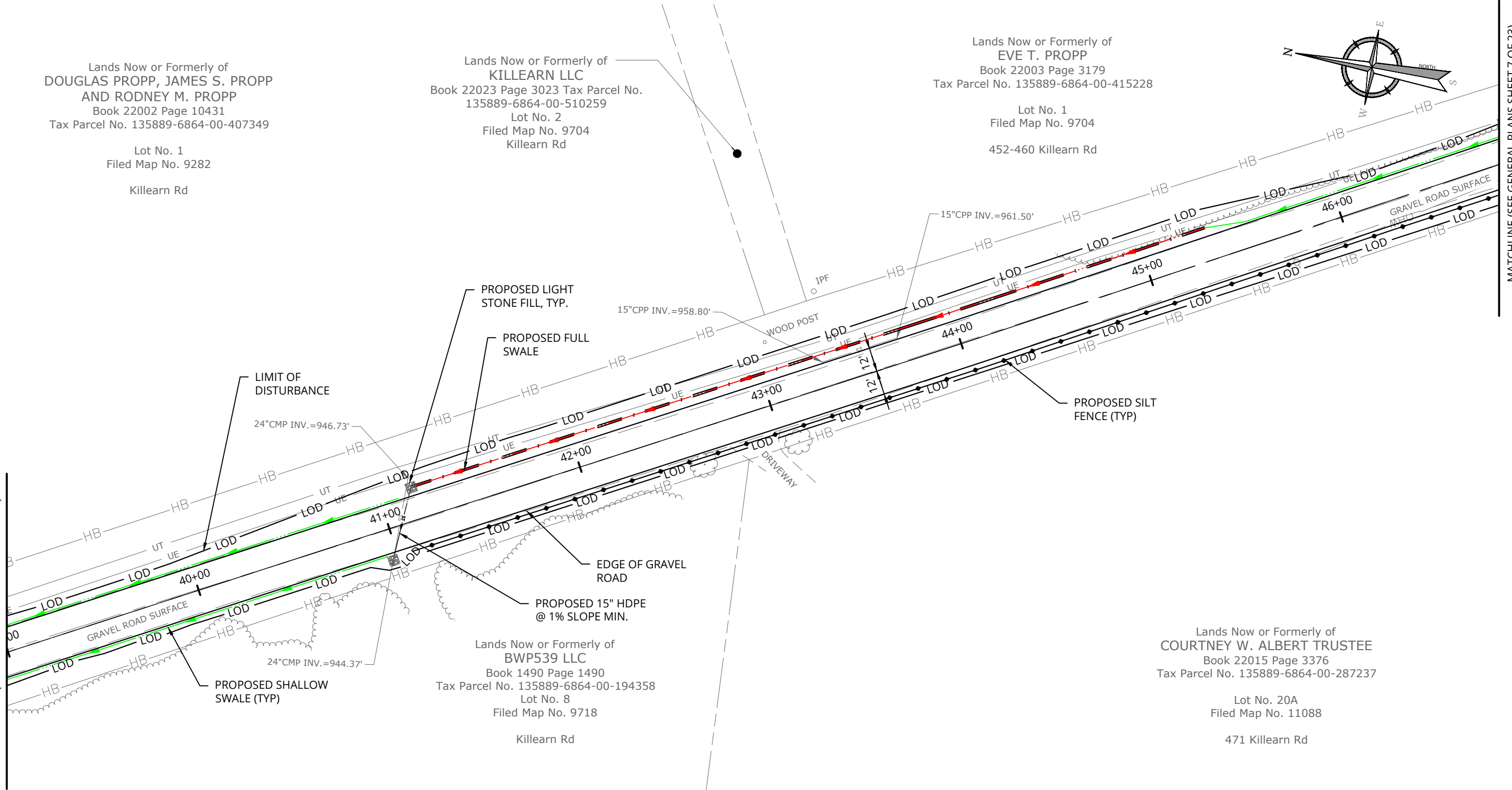
Lot No. 1
Filed Map No. 9704

452-460 Killearn Rd



MATCHLINE (SEE GENERAL PLANS SHEET 7 OF 23)

MATCHLINE (SEE GENERAL PLANS SHEET 5 OF 23)

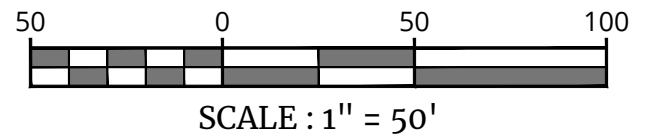


GENERAL PLANS
SCALE: 1" = 50'

Lands Now or Formerly of
COURTNEY W. ALBERT TRUSTEE
Book 22015 Page 3376
Tax Parcel No. 135889-6864-00-287237

Lot No. 20A
Filed Map No. 11088

471 Killearn Rd



PREPARED BY:
ON:

DRAFT



Engineering
& Design

www.colliersengineering.com

Copyright © 2025, Colliers Engineering & Design All Rights Reserved. This drawing and all the information contained herein is authorized for use only by the party for whom the services were contracted or to whom it is verified. This drawing may not be copied, reused, altered, distributed or relied upon for any other purpose without the express written consent of Colliers Engineering & Design.

IT IS A VIOLATION OF LAW FOR ANY PERSON, UNLESS THEY ARE ACTING UNDER THE DIRECTION OF A LICENSED PROFESSIONAL ENGINEER, ARCHITECT, LANDSCAPE ARCHITECT, OR LAND SURVEYOR, TO ALTER AN ITEM IN ANY WAY. IF AN ITEM BEARING THE STAMP OF A LICENSED PROFESSIONAL IS ALTERED, THE ALTERING ENGINEER, ARCHITECT, LANDSCAPE ARCHITECT, OR LAND SURVEYOR SHALL STAMP THE DOCUMENT AND INCLUDE THE NOTATION "ALTERED BY" FOLLOWED BY THEIR SIGNATURE, THE DATE OF SUCH ALTERATION, AND A SPECIFIC DESCRIPTION OF THE ALTERATION.

AS BUILT REVISIONS
DESCRIPTION OF WORK:

SIGNATURE

DATE

DOCUMENT NAME: C-GNPS

KILLEARN ROAD IMPROVEMENTS

KILLEARN ROAD

TOWN OF WASHINGTON

DUTCHESS COUNTY

STATE OF NEW YORK

PIN: N/A

BRIDGE/CULVERT: N/A



Engineering
& Design

ALBANY
18 Corporate Woods Blvd.
Suite 400
Albany, NY 12211
Phone: 518.459.3252
COLLIERS ENGINEERING & DESIGN
ARCHITECTURE, LANDSCAPE ARCHITECTURE,
SURVEYING, ETC.

NOTE: ALL UTILITY LOCATIONS SHOWN ARE QUALITY LEVEL C (QLC).

GENERAL PLANS
(SHEET 6 OF 23)

ALL DIMENSIONS IN US SURVEY FEET UNLESS OTHERWISE NOTED

MANAGER: DAF DESIGNED BY: JWH DRAWN BY: ASC CHECKED BY: SNH

PROJECT NUMBER:
25006179G

DRAWING No. GNPS-6

SHEET No. 11 OF 28

PRINT DATE: 6/16/2025

Lands Now or Formerly of
EVE T. PROPP
Book 22003 Page 3179
Tax Parcel No. 135889-6864-00-415228

Lot No. 1
Filed Map No. 9704

452-460 Killearn Rd

PROPOSED SHALLOW
SWALE
12" CMP INV. = 985.98'

PROPOSED LIGHT
STONE FILL, TYP.

EDGE OF GRAVEL
ROAD

PROPOSED FULL
SWALE

PROPOSED SILT
FENCE (TYP)

PROPOSED 18"
CULVERT

LIMIT OF
DISTURBANCE

UNABLE TO LOCATE
END OF PIPE

REPLACE CMP WITH NEW
15" HDPE @ 1% SLOPE MIN.

Lands Now or Formerly of
COURTNEY W. ALBERT TRUSTEE
Book 22015 Page 3376
Tax Parcel No. 135889-6864-00-287237

Lot No. 20A
Filed Map No. 11088

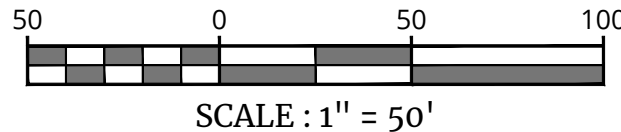
471 Killearn Rd

Lands Now or Formerly of
COURTNEY W. ALBERT TRUSTEE
Book 22015 Page 3379
Tax Parcel No. 135889-6864-00-302183

Lot No. 20B
Filed Map No. 11088

GENERAL PLANS

SCALE: 1" = 50'



PREPARED BY:
ON:

DRAFT



Engineering
& Design

www.colliersengineering.com

Copyright © 2025, Colliers Engineering & Design. All Rights Reserved. This drawing and all the information contained herein is authorized for use only by the party for whom the services were contracted or to whom it is verified. This drawing may not be copied, issued, altered, distributed or relied upon for any other purpose without the express written consent of Colliers Engineering & Design.

IT IS A VIOLATION OF LAW FOR ANY PERSON, UNLESS THEY ARE ACTING UNDER THE DIRECTION OF A LICENSED PROFESSIONAL ENGINEER, ARCHITECT, LANDSCAPE ARCHITECT, OR LAND SURVEYOR, TO ALTER AN ITEM IN ANY WAY. IF AN ITEM BEARING THE STAMP OF A LICENSED PROFESSIONAL IS ALTERED, THE ALTERING ENGINEER, ARCHITECT, LANDSCAPE ARCHITECT, OR LAND SURVEYOR SHALL STAMP THE DOCUMENT AND INCLUDE THE NOTATION "ALTERED BY" FOLLOWED BY THEIR SIGNATURE, THE DATE OF SUCH ALTERATION, AND A SPECIFIC DESCRIPTION OF THE ALTERATION.

AS BUILT REVISIONS
DESCRIPTION OF WORK:

SIGNATURE

DATE

DOCUMENT NAME: C-GNPS

KILLEARN ROAD IMPROVEMENTS

KILLEARN ROAD

TOWN OF WASHINGTON

DUTCHESS COUNTY

STATE OF NEW YORK

PIN: N/A

BRIDGE/CULVERT: N/A



Engineering
& Design

ALBANY
18 Corporate Woods Blvd.
Suite 400
Albany, NY 12211
Phone: 518.459.3252

COLLIERS ENGINEERING & DESIGN,
ARCHITECTURE, LANDSCAPE ARCHITECTURE,
SURVEYING, P.C.

NOTE: ALL UTILITY LOCATIONS SHOWN ARE QUALITY LEVEL C (QLC).

GENERAL PLANS
(SHEET 7 OF 23)

ALL DIMENSIONS IN US SURVEY FEET UNLESS OTHERWISE NOTED

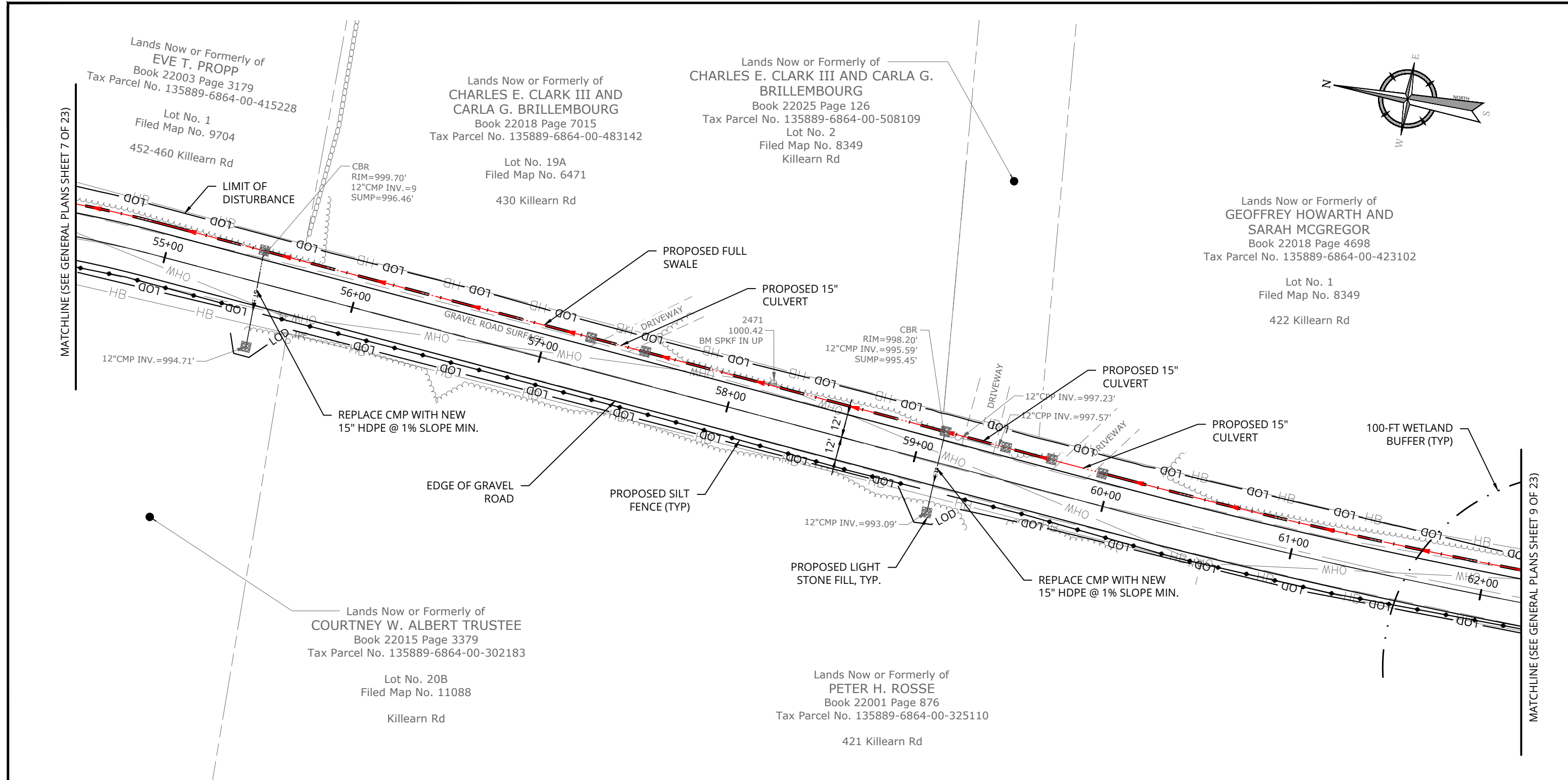
MANAGER: DAF DESIGNED BY: JWH DRAWN BY: ASC CHECKED BY: SNH

PROJECT NUMBER:
25006179G

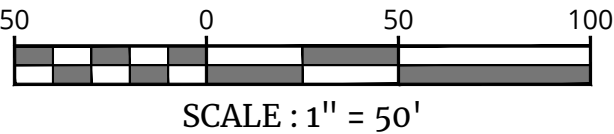
DRAWING No. GNPS-7
SHEET No. 12 OF 28

PRINT DATE: 6/16/2025

MATCHLINE (SEE GENERAL PLANS SHEET 8 OF 23)



GENERAL PLANS
SCALE: 1" = 50'



PREPARED BY:
ON:

DRAFT

Colliers Engineering & Design
www.colliersengineering.com

IT IS A VIOLATION OF LAW FOR ANY PERSON, UNLESS THEY ARE ACTING UNDER THE DIRECTION OF A LICENSED PROFESSIONAL ENGINEER, ARCHITECT, LANDSCAPE ARCHITECT, OR LAND SURVEYOR, TO ALTER AN ITEM IN ANY WAY. IF AN ITEM BEARING THE STAMP OF A LICENSED PROFESSIONAL IS ALTERED, THE ALTERING ENGINEER, ARCHITECT, LANDSCAPE ARCHITECT, OR LAND SURVEYOR SHALL STAMP THE DOCUMENT AND INCLUDE THE NOTATION "ALTERED BY" FOLLOWED BY THEIR SIGNATURE, THE DATE OF SUCH ALTERATION, AND A SPECIFIC DESCRIPTION OF THE ALTERATION.

AS BUILT REVISIONS
DESCRIPTION OF WORK:

SIGNATURE	DATE

DOCUMENT NAME: C-GNPS

KILLEARN ROAD IMPROVEMENTS

KILLEARN ROAD
TOWN OF WASHINGTON
DUTCHESS COUNTY
STATE OF NEW YORK

PIN: N/A BRIDGE/CULVERT: N/A

Colliers
Engineering & Design
ALBANY
18 Corporate Woods Blvd.
Suite 400
Albany, NY 12211
Phone: 518.459.3252
COLLIERS ENGINEERING & DESIGN, ARCHITECTURE, LANDSCAPE ARCHITECTURE, SURVEYING, P.E.

NOTE: ALL UTILITY LOCATIONS SHOWN ARE QUALITY LEVEL C (QLC).

GENERAL PLANS
(SHEET 8 OF 23)

ALL DIMENSIONS IN US SURVEY FEET UNLESS OTHERWISE NOTED

MANAGER:	DESIGNED BY:	DRAWN BY:	CHECKED BY:
DAF	JWH	ASC	SNH

PROJECT NUMBER:
25006179G

DRAWING No. GNPS-8
SHEET No. 13 OF 28

PRINT DATE: 6/16/2025

Lands Now or Formerly of
GEOFFREY HOWARTH AND
SARAH MCGREGOR
Book 22018 Page 4698
Tax Parcel No. 135889-6864-00-423102

Lot No. 1
Filed Map No. 8349

422 Killearn Rd

Lands Now or Formerly of
SANDRA A. BEAUMONT TRUSTEE
Book 22006 Page 6748
Tax Parcel No. 135889-6864-00-441057

Lot No. 18
Filed Map No. 5982

378 Killearn Rd

REPLACE CMP WITH NEW
18" HDPE @ 1% SLOPE MIN.

LIMIT OF
DISTURBANCE

18" CMP INV.=1027.67'

15" CMP INV.=1024.21'

GRAVEL ROAD SURFACE

389 Killearn Rd

387 Killearn Rd

Lands Now or Formerly of
JAMES H. DEMUS
TRUSTEE
AND LYNETTE DEMUS
TRUSTEE

Book 22016 Page 2410
Tax Parcel No.
135889-6863-00-358999

Lot No. 1
Filed Map No. 7552

391 Killearn Rd

CBR
RIM=993.76'
12" CMP INV.=991.34'
SUMP=991.41'

REPLACE CMP WITH NEW
15" HDPE @ 1% SLOPE MIN.

PROPOSED FULL
SWALE

15" CMP INV.=991.75'

12" CMP INV.=989.66'

15" CMP INV.=989.72'

WETLAND DISTURBANCE
AREA = 28 SF

Lands Now or Formerly of
PETER H. ROSSE
Book 22001 Page 876
Tax Parcel No. 135889-6864-00-325110

421 Killearn Rd

Lands Now or Formerly of
JOHANNA H. ROSSE
Book 1636 Page 105
Tax Parcel No. 135889-6864-00-342045

399 Killearn Rd

PROPOSED SILT
FENCE (TYP)

GENERAL PLANS

SCALE: 1" = 50'



SCALE : 1" = 50'

PREPARED BY:
ON:

DRAFT



Engineering
& Design

www.colliersengineering.com

Copyright © 2025, Colliers Engineering & Design All Rights Reserved. This drawing and all the information contained herein is authorized for use only by the party for whom the services were contracted or to whom it is verified. This drawing may not be copied, reused, altered, distributed or relied upon for any other purpose without the express written consent of Colliers Engineering & Design.

IT IS A VIOLATION OF LAW FOR ANY PERSON, UNLESS THEY ARE ACTING UNDER THE DIRECTION OF A LICENSED PROFESSIONAL ENGINEER, ARCHITECT, LANDSCAPE ARCHITECT, OR LAND SURVEYOR, TO ALTER AN ITEM IN ANY WAY. IF AN ITEM BEARING THE STAMP OF A LICENSED PROFESSIONAL IS ALTERED, THE ALTERING ENGINEER, ARCHITECT, LANDSCAPE ARCHITECT, OR LAND SURVEYOR SHALL STAMP THE DOCUMENT AND INCLUDE THE NOTATION "ALTERED BY" FOLLOWED BY THEIR SIGNATURE, THE DATE OF SUCH ALTERATION, AND A SPECIFIC DESCRIPTION OF THE ALTERATION.

AS BUILT REVISIONS
DESCRIPTION OF WORK:

SIGNATURE

DATE

DOCUMENT NAME: C-GNPS

KILLEARN ROAD IMPROVEMENTS

KILLEARN ROAD

TOWN OF WASHINGTON

DUTCHESS COUNTY

STATE OF NEW YORK

PIN: N/A

BRIDGE/CULVERT: N/A



Engineering
& Design

ALBANY

18 Corporate Woods Blvd.
Suite 400

Albany, NY 12211

Phone: 518.459.3252

COLLIERS ENGINEERING & DESIGN,
ARCHITECTURE, LANDSCAPE ARCHITECTURE,
SURVEYING, P.E.

NOTE: ALL UTILITY LOCATIONS SHOWN ARE QUALITY LEVEL C (QLC).

GENERAL PLANS
(SHEET 9 OF 23)

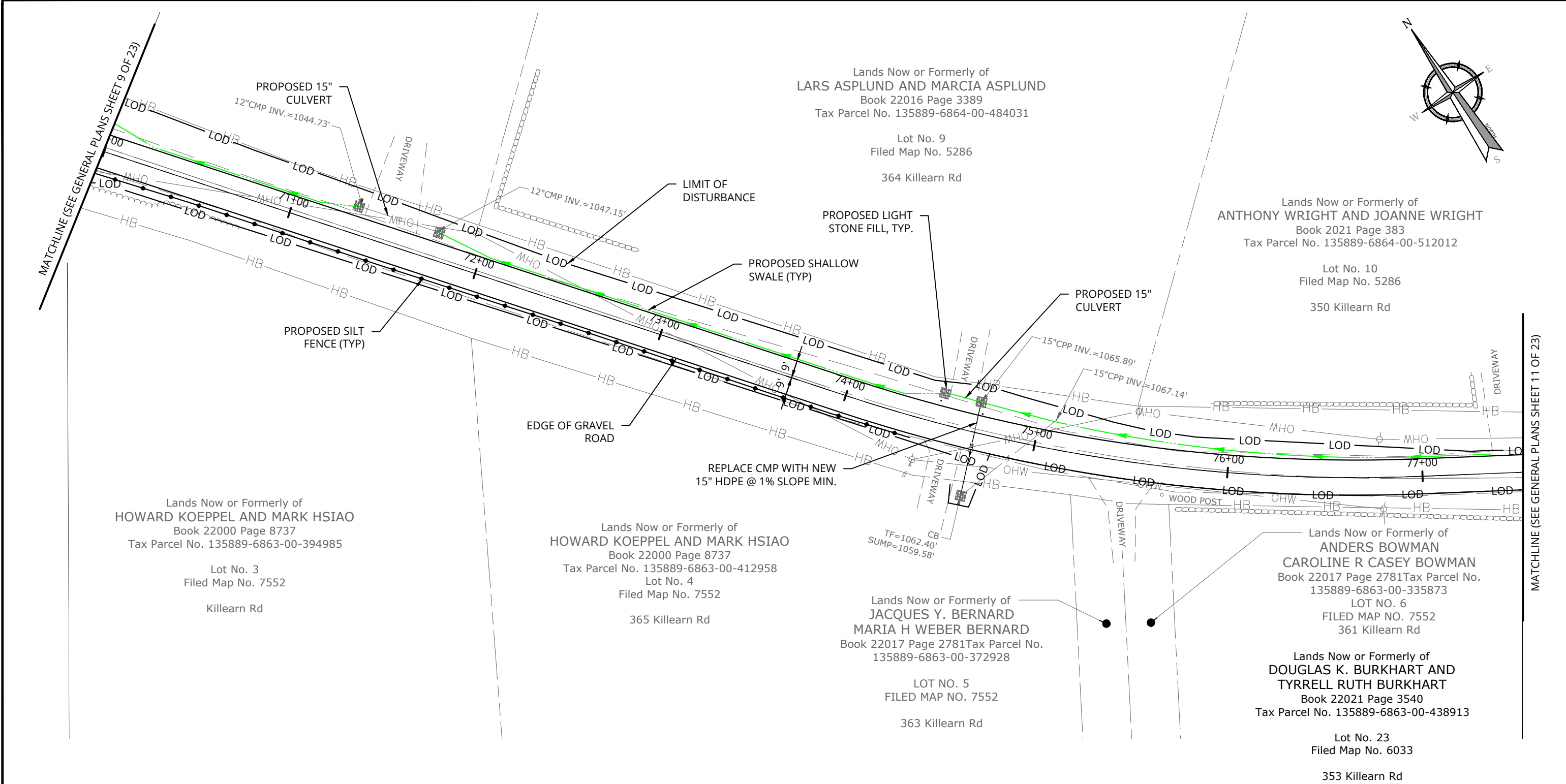
ALL DIMENSIONS IN US SURVEY FEET UNLESS OTHERWISE NOTED

MANAGER: DAF DESIGNED BY: JWH DRAWN BY: ASC CHECKED BY: SNH

PROJECT NUMBER:
25006179G

DRAWING No. GNPS-9
SHEET No. 14 OF 28


PRINT DATE: 6/16/2025



GENERAL PLANS
SCALE: 1" = 50'

PREPARED BY:
ON:

DRAFT



Engineering & Design

www.colliersengineering.com

Copyright © 2025, Colliers Engineering & Design. All Rights Reserved. This drawing and all the information contained herein is authorized for use only by the party for whom the services were contracted or to whom it is verified. This drawing may not be copied, reused, distributed or relied upon for any other purpose without the express written consent of Colliers Engineering & Design.

IT IS A VIOLATION OF LAW FOR ANY PERSON, UNLESS THEY ARE ACTING UNDER THE DIRECTION OF A LICENSED PROFESSIONAL ENGINEER, ARCHITECT, LANDSCAPE ARCHITECT, OR LAND SURVEYOR, TO ALTER AN ITEM IN ANY WAY. IF AN ITEM BEARING THE STAMP OF A LICENSED PROFESSIONAL IS ALTERED, THE ALTERING ENGINEER, ARCHITECT, LANDSCAPE ARCHITECT, OR LAND SURVEYOR SHALL STAMP THE DOCUMENT AND INCLUDE THE NOTATION "ALTERED BY" FOLLOWED BY THEIR SIGNATURE, THE DATE OF SUCH ALTERATION, AND A SPECIFIC DESCRIPTION OF THE ALTERATION.

AS BUILT REVISIONS DESCRIPTION OF WORK:	
SIGNATURE	DATE
DOCUMENT NAME: C-GNPS	

KILLEARN ROAD IMPROVEMENTS	
KILLEARN ROAD	
TOWN OF WASHINGTON	
DUTCHESS COUNTY	
STATE OF NEW YORK	
PIN: N/A	BRIDGE/CULVERT: N/A

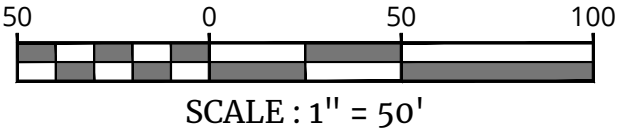


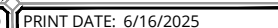
Engineering & Design

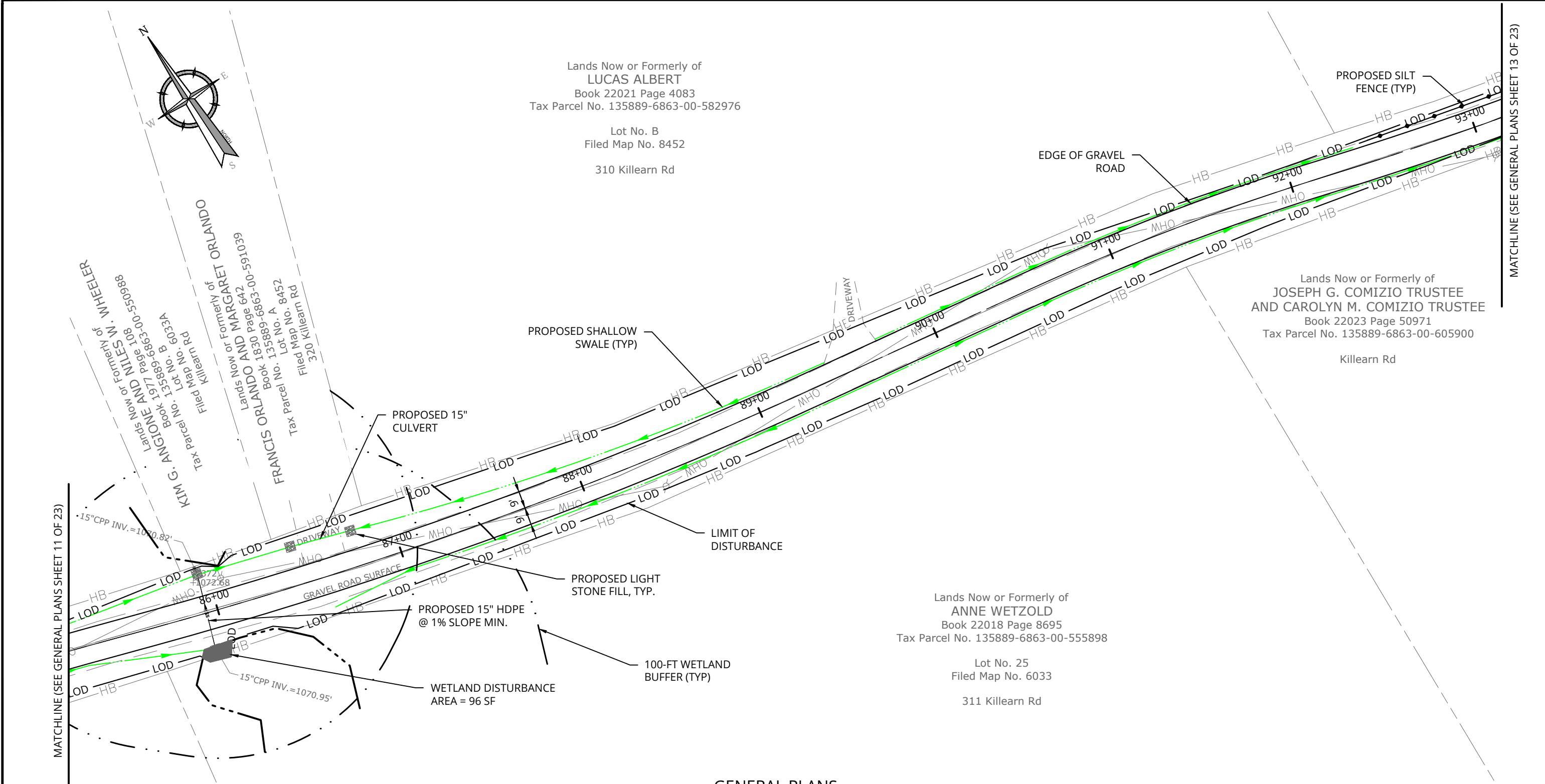
ALBANY
18 Corporate Woods Blvd.
Suite 400
Albany, NY 12211
Phone: 518.459.3252
COLLIERS ENGINEERING & DESIGN, ARCHITECTURE, LANDSCAPE ARCHITECTURE, SURVEYING, P.E.

NOTE: ALL UTILITY LOCATIONS SHOWN ARE QUALITY LEVEL C (QLC).	
GENERAL PLANS (SHEET 10 OF 23)	
ALL DIMENSIONS IN US SURVEY FEET UNLESS OTHERWISE NOTED	

MANAGER: DAF	DESIGNED BY: JWH	DRAWN BY: ASC	CHECKED BY: SNH
PROJECT NUMBER: 25006179G			
DRAWING No.		GNPS-10	
SHEET No.		15 OF 28	
PRINT DATE: 6/16/2025			








PREPARED BY:
ON:

DRAFT



Engineering & Design

www.colliersengineering.com

Copyright © 2025, Colliers Engineering & Design All Rights Reserved. This drawing and all the information contained herein is authorized for use only by the party for whom the services were contracted or to whom it is verified. This drawing may not be copied, issued, reduced, distributed or relied upon for any other purpose without the express written consent of Colliers Engineering & Design.

IT IS A VIOLATION OF LAW FOR ANY PERSON, UNLESS THEY ARE ACTING UNDER THE DIRECTION OF A LICENSED PROFESSIONAL ENGINEER, ARCHITECT, LANDSCAPE ARCHITECT, OR LAND SURVEYOR, TO ALTER AN ITEM IN ANY WAY. IF AN ITEM BEARING THE STAMP OF A LICENSED PROFESSIONAL IS ALTERED, THE ALTERING ENGINEER, ARCHITECT, LANDSCAPE ARCHITECT, OR LAND SURVEYOR SHALL STAMP THE DOCUMENT AND INCLUDE THE NOTATION "ALTERED BY" FOLLOWED BY THEIR SIGNATURE, THE DATE OF SUCH ALTERATION, AND A SPECIFIC DESCRIPTION OF THE ALTERATION.

AS BUILT REVISIONS DESCRIPTION OF WORK:	
SIGNATURE	DATE
DOCUMENT NAME: C-GNPS	

KILLEARN ROAD IMPROVEMENTS	
KILLEARN ROAD	
TOWN OF WASHINGTON	
DUTCHESS COUNTY	
STATE OF NEW YORK	
PIN: N/A	BRIDGE/CULVERT: N/A



Engineering & Design

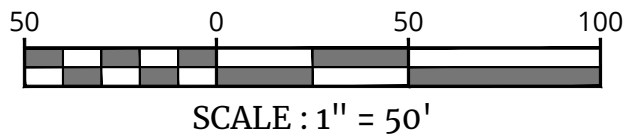
ALBANY
18 Corporate Woods Blvd.
Suite 400
Albany, NY 12211
Phone: 518.459.3252
COLLIERS ENGINEERING & DESIGN, ARCHITECTURE, LANDSCAPE ARCHITECTURE, SURVEYING, P.E.

NOTE: ALL UTILITY LOCATIONS SHOWN ARE QUALITY LEVEL C (QLC).

GENERAL PLANS
(SHEET 12 OF 23)

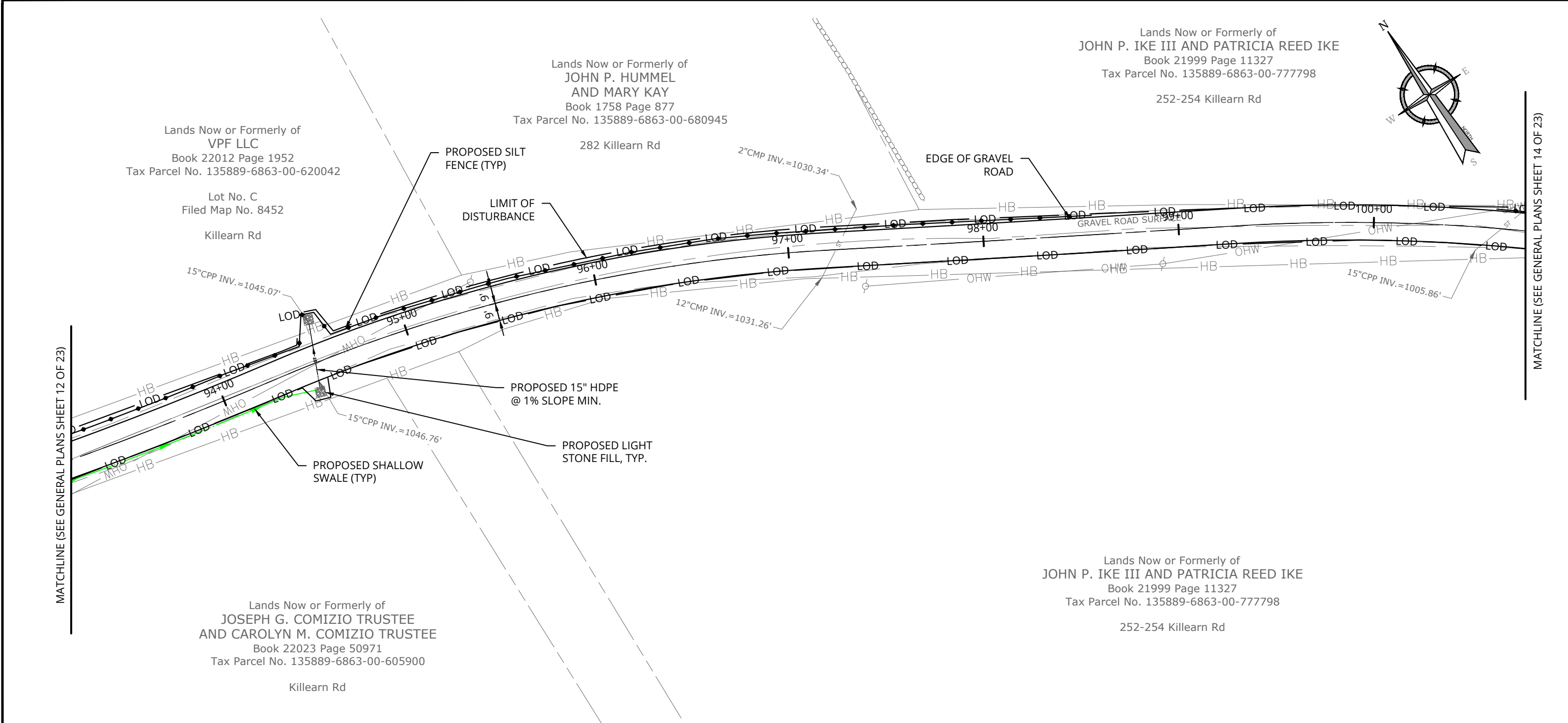
ALL DIMENSIONS IN US SURVEY FEET UNLESS OTHERWISE NOTED

MANAGER: DAF	DESIGNED BY: JWH	DRAWN BY: ASC	CHECKED BY: SNH
PROJECT NUMBER: 25006179G			
DRAWING No.		GNPS-12	
SHEET No.		17 OF 28	
PRINT DATE: 6/16/2025			



GENERAL PLANS
SCALE: 1" = 50'

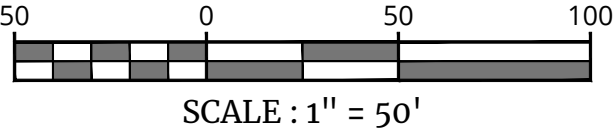
MATCHLINE (SEE GENERAL PLANS SHEET 13 OF 23)





GENERAL PLANS
SCALE: 1" = 50'

PREPARED BY:
ON:

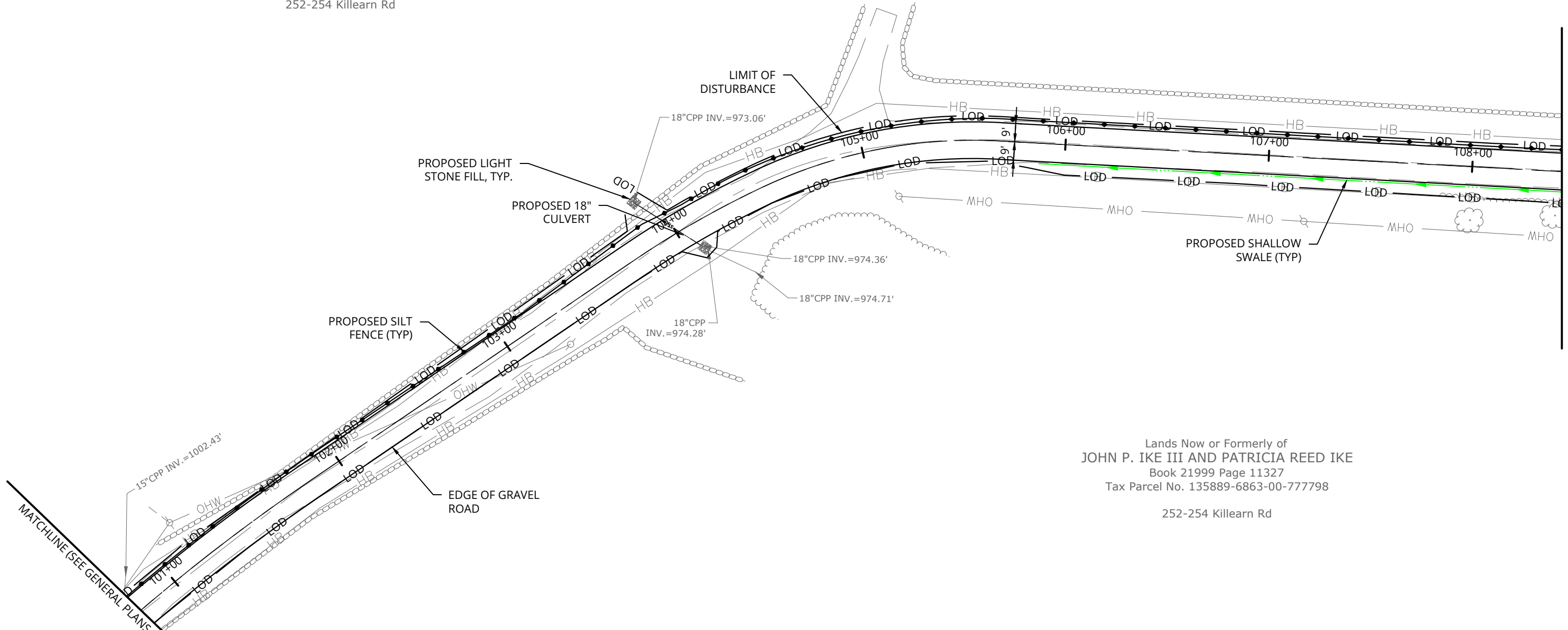
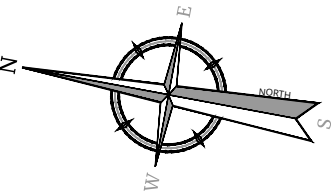
DRAFT



 Engineering & Design www.colliersengineering.com <small>Copyright © 2025, Colliers Engineering & Design. All Rights Reserved. This drawing and all the information contained herein is authorized for use only by the party for whom the services were contracted or to whom it is verified. This drawing may not be copied, issued, altered, distributed or relied upon for any other purpose without the express written consent of Colliers Engineering & Design.</small>	<small>IT IS A VIOLATION OF LAW FOR ANY PERSON, UNLESS THEY ARE ACTING UNDER THE DIRECTION OF A LICENSED PROFESSIONAL ENGINEER, ARCHITECT, LANDSCAPE ARCHITECT, OR LAND SURVEYOR, TO ALTER AN ITEM IN ANY WAY. IF AN ITEM BEARING THE STAMP OF A LICENSED PROFESSIONAL IS ALTERED, THE ALTERING ENGINEER, ARCHITECT, LANDSCAPE ARCHITECT, OR LAND SURVEYOR SHALL STAMP THE DOCUMENT AND INCLUDE THE NOTATION "ALTERED BY" FOLLOWED BY THEIR SIGNATURE, THE DATE OF SUCH ALTERATION, AND A SPECIFIC DESCRIPTION OF THE ALTERATION.</small>	<small>AS BUILT REVISIONS DESCRIPTION OF WORK:</small>		KILLEARN ROAD IMPROVEMENTS		 Engineering & Design ALBANY 18 Corporate Woods Blvd. Suite 400 Albany, NY 12211 Phone: 518.459.3252 <small>COLLIERS ENGINEERING & DESIGN, ARCHITECTURE, LANDSCAPE ARCHITECTURE, SURVEYING, ETC., P.C.</small>	<small>NOTE: ALL UTILITY LOCATIONS SHOWN ARE QUALITY LEVEL C (QLC).</small>	<small>MANAGER:</small> DAF	<small>DESIGNED BY:</small> JWH	<small>DRAWN BY:</small> ASC	<small>CHECKED BY:</small> SNH
				KILLEARN ROAD TOWN OF WASHINGTON DUTCHESS COUNTY STATE OF NEW YORK				GENERAL PLANS (SHEET 13 OF 23)		<small>PROJECT NUMBER:</small> 25006179G	
										<small>DRAWING No.</small> GNPS-13	<small>CHECKED BY:</small> SNH
		<small>SIGNATURE</small> _____ <small>DATE</small> _____		<small>PIN: N/A</small> <small>BRIDGE/CULVERT: N/A</small>				<small>ALL DIMENSIONS IN US SURVEY FEET UNLESS OTHERWISE NOTED</small>		<small>PRINT DATE: 6/16/2025</small>	

Lands Now or Formerly of
JOHN P. IKE III AND PATRICIA REED IKE
Book 21999 Page 11327
Tax Parcel No. 135889-6863-00-777798

252-254 Killearn Rd

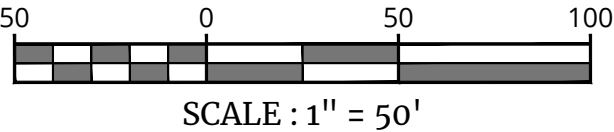


MATCHLINE (SEE GENERAL PLANS SHEET 15 OF 23)

Lands Now or Formerly of
JOHN P. IKE III AND PATRICIA REED IKE
Book 21999 Page 11327
Tax Parcel No. 135889-6863-00-777798

252-254 Killearn Rd

GENERAL PLANS
SCALE: 1" = 50'



PREPARED BY:
ON:

DRAFT



Engineering
& Design

www.colliersengineering.com

Copyright © 2025, Colliers Engineering & Design. All Rights Reserved. This drawing and all the information contained herein is authorized for use only by the party for whom the services were contracted or to whom it is verified. This drawing may not be copied, reused, modified, distributed or relied upon for any other purpose without the express written consent of Colliers Engineering & Design.

IT IS A VIOLATION OF LAW FOR ANY PERSON, UNLESS THEY ARE ACTING UNDER THE DIRECTION OF A LICENSED PROFESSIONAL ENGINEER, ARCHITECT, LANDSCAPE ARCHITECT, OR LAND SURVEYOR, TO ALTER AN ITEM IN ANY WAY. IF AN ITEM BEARING THE STAMP OF A LICENSED PROFESSIONAL IS ALTERED, THE ALTERING ENGINEER, ARCHITECT, LANDSCAPE ARCHITECT, OR LAND SURVEYOR SHALL STAMP THE DOCUMENT AND INCLUDE THE NOTATION "ALTERED BY" FOLLOWED BY THEIR SIGNATURE, THE DATE OF SUCH ALTERATION, AND A SPECIFIC DESCRIPTION OF THE ALTERATION.

AS BUILT REVISIONS
DESCRIPTION OF WORK:

SIGNATURE DATE

DOCUMENT NAME: C-GNPS

KILLEARN ROAD IMPROVEMENTS

KILLEARN ROAD

TOWN OF WASHINGTON

DUTCHESS COUNTY

STATE OF NEW YORK

PIN: N/A

BRIDGE/CULVERT: N/A



Engineering
& Design

ALBANY

18 Corporate Woods Blvd.
Suite 400

Albany, NY 12211

Phone: 518.459.3252

COLLIERS ENGINEERING & DESIGN,
ARCHITECTURE, LANDSCAPE ARCHITECTURE,
SURVEYING, P.C.

NOTE: ALL UTILITY LOCATIONS SHOWN ARE QUALITY LEVEL C (QLC).

GENERAL PLANS
(SHEET 14 OF 23)

ALL DIMENSIONS IN US SURVEY FEET UNLESS OTHERWISE NOTED

MANAGER: DAF DESIGNED BY: JWH DRAWN BY: ASC CHECKED BY: SNH

PROJECT NUMBER:
25006179G

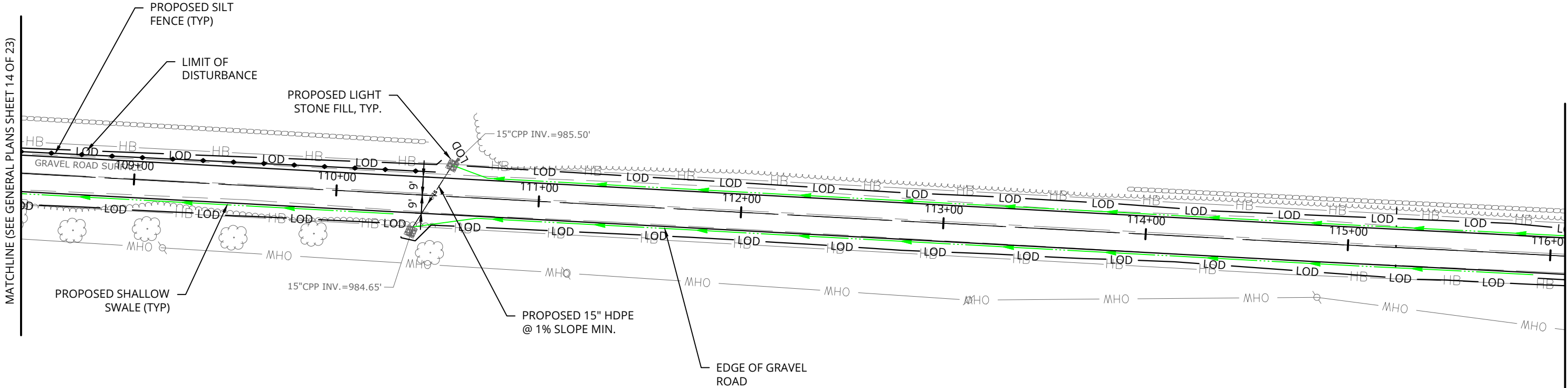
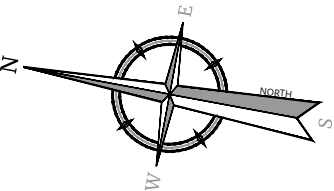
DRAWING No. GNPS-14

SHEET No. 19 OF 28

PRINT DATE: 6/16/2025

Lands Now or Formerly of
JOHN P. IKE III AND PATRICIA REED IKE
Book 21999 Page 11327
Tax Parcel No. 135889-6863-00-777798

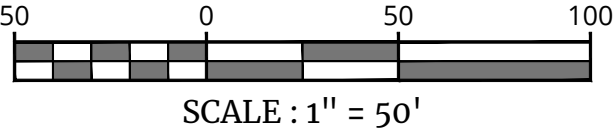
252-254 Killearn Rd



Lands Now or Formerly of
JOHN P. IKE III AND PATRICIA REED IKE
Book 21999 Page 11327
Tax Parcel No. 135889-6863-00-777798


252-254 Killearn Rd

GENERAL PLANS
SCALE: 1" = 50'



PREPARED BY:
ON:

DRAFT



Engineering
& Design

www.colliersengineering.com

Copyright © 2025, Colliers Engineering & Design All Rights Reserved. This drawing and all the information contained herein is authorized for use only by the party for whom the services were contracted or to whom it is verified. This drawing may not be copied, issued, altered, distributed or relied upon for any other purpose without the express written consent of Colliers Engineering & Design.

IT IS A VIOLATION OF LAW FOR ANY PERSON, UNLESS THEY ARE ACTING UNDER THE DIRECTION OF A LICENSED PROFESSIONAL ENGINEER, ARCHITECT, LANDSCAPE ARCHITECT, OR LAND SURVEYOR, TO ALTER AN ITEM IN ANY WAY. IF AN ITEM BEARING THE STAMP OF A LICENSED PROFESSIONAL IS ALTERED, THE ALTERING ENGINEER, ARCHITECT, LANDSCAPE ARCHITECT, OR LAND SURVEYOR SHALL STAMP THE DOCUMENT AND INCLUDE THE NOTATION "ALTERED BY" FOLLOWED BY THEIR SIGNATURE, THE DATE OF SUCH ALTERATION, AND A SPECIFIC DESCRIPTION OF THE ALTERATION.

AS BUILT REVISIONS
DESCRIPTION OF WORK:

SIGNATURE	DATE
-----------	------

DOCUMENT NAME: C-GNPS

KILLEARN ROAD IMPROVEMENTS

KILLEARN ROAD
TOWN OF WASHINGTON
DUTCHESS COUNTY
STATE OF NEW YORK

PIN: N/A BRIDGE/CULVERT: N/A



Engineering
& Design

ALBANY
18 Corporate Woods Blvd.
Suite 400
Albany, NY 12211
Phone: 518.459.3252
COLLIERS ENGINEERING & DESIGN
ARCHITECTURE, LANDSCAPE ARCHITECTURE
SURVEYING, P.E.

NOTE: ALL UTILITY LOCATIONS SHOWN ARE QUALITY LEVEL C (QLC).

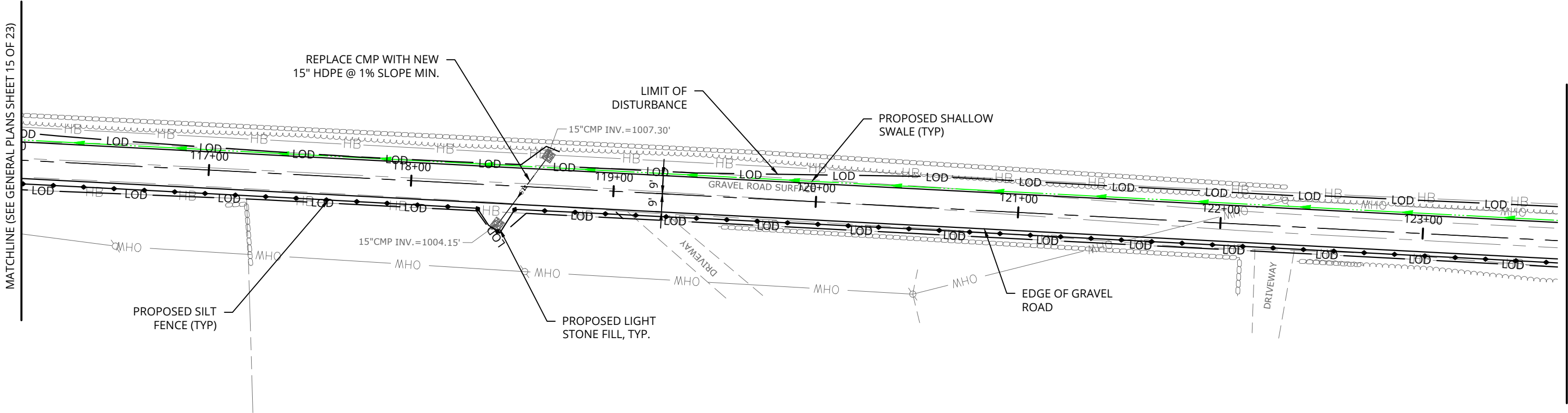
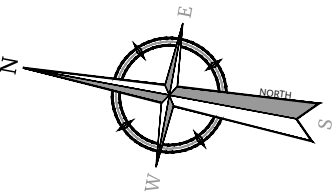
GENERAL PLANS
(SHEET 15 OF 23)

ALL DIMENSIONS IN US SURVEY FEET UNLESS OTHERWISE NOTED

MANAGER: DAF	DESIGNED BY: JWH	DRAWN BY: ASC	CHECKED BY: SNH
PROJECT NUMBER: 25006179G			
DRAWING No. SHEET No.		GNPS-15 20 OF 28	
PRINT DATE: 6/16/2025			

Lands Now or Formerly of
JOHN P. IKE III AND PATRICIA REED IKE
Book 21999 Page 11327
Tax Parcel No. 135889-6863-00-777798

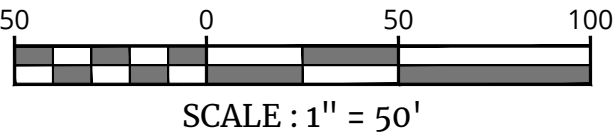
252-254 Killearn Rd



Lands Now or Formerly of
DARIA P. SALUSBURY
Book 22007 Page 4048
Tax Parcel No. 135889-6863-00-685707


197 Killearn Rd

GENERAL PLANS
SCALE: 1" = 50'



PREPARED BY:
ON:

DRAFT



Engineering & Design

www.colliersengineering.com

Copyright © 2025, Colliers Engineering & Design All Rights Reserved. This drawing and all the information contained herein is authorized for use only by the party for whom the services were contracted or to whom it is verified. This drawing may not be copied, reused, altered, distributed or relied upon for any other purpose without the express written consent of Colliers Engineering & Design.

IT IS A VIOLATION OF LAW FOR ANY PERSON, UNLESS THEY ARE ACTING UNDER THE DIRECTION OF A LICENSED PROFESSIONAL ENGINEER, ARCHITECT, LANDSCAPE ARCHITECT, OR LAND SURVEYOR, TO ALTER AN ITEM IN ANY WAY. IF AN ITEM BEARING THE STAMP OF A LICENSED PROFESSIONAL IS ALTERED, THE ALTERING ENGINEER, ARCHITECT, LANDSCAPE ARCHITECT, OR LAND SURVEYOR SHALL STAMP THE DOCUMENT AND INCLUDE THE NOTATION "ALTERED BY" FOLLOWED BY THEIR SIGNATURE, THE DATE OF SUCH ALTERATION, AND A SPECIFIC DESCRIPTION OF THE ALTERATION.

AS BUILT REVISIONS DESCRIPTION OF WORK:	
SIGNATURE	DATE
DOCUMENT NAME: C-GNPS	

KILLEARN ROAD IMPROVEMENTS	
KILLEARN ROAD	
TOWN OF WASHINGTON	
DUTCHESS COUNTY	
STATE OF NEW YORK	
PIN: N/A	BRIDGE/CULVERT: N/A



Engineering & Design

ALBANY
18 Corporate Woods Blvd.
Suite 400
Albany, NY 12211
Phone: 518.459.3252
COLLIERS ENGINEERING & DESIGN, ARCHITECTURE, LANDSCAPE ARCHITECTURE, SURVEYING, P.C.

NOTE: ALL UTILITY LOCATIONS SHOWN ARE QUALITY LEVEL C (QLC).

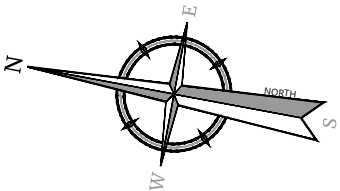
**GENERAL PLANS
(SHEET 16 OF 23)**

ALL DIMENSIONS IN US SURVEY FEET UNLESS OTHERWISE NOTED

MANAGER: DAF	DESIGNED BY: JWH	DRAWN BY: ASC	CHECKED BY: SNH
PROJECT NUMBER: 25006179G			
DRAWING No. SHEET No.		GNPS-16 21 OF 28	
PRINT DATE: 6/16/2025			

Lands Now or Formerly of
JOHN P. IKE III AND PATRICIA REED IKE
Book 21999 Page 11327
Tax Parcel No. 135889-6863-00-777798
252-254 Killearn Rd

Lands Now or Formerly of
DAVID KUNTZ
Book 22021 Page 1401
Tax Parcel No. 135889-6863-00-775624
Lot No. 2
Filed Map No. 86941
166 Killearn Rd



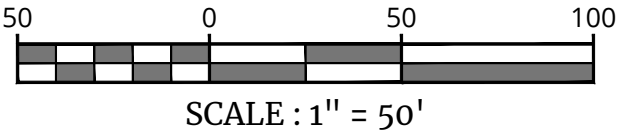
MATCHLINE (SEE GENERAL PLANS SHEET 16 OF 23)

MATCHLINE (SEE GENERAL PLANS SHEET 18 OF 23)

Lands Now or Formerly of
DARIA P. SALUSBURY
Book 22007 Page 4048
Tax Parcel No. 135889-6863-00-685707
197 Killearn Rd


Lands Now or Formerly of
SAMANTHA NEXT DOOR LLC
Book 22016 Page 6512
Tax Parcel No. 135889-6863-00-607635
Killearn Rd

GENERAL PLANS
SCALE: 1" = 50'



PREPARED BY:
ON:

DRAFT



Engineering
& Design

www.colliersengineering.com

Copyright © 2025, Colliers Engineering & Design All Rights Reserved. This drawing and all the information contained herein is authorized for use only by the party for whom the services were contracted or to whom it is verified. This drawing may not be copied, reused, altered, distributed or relied upon for any other purpose without the express written consent of Colliers Engineering & Design.

IT IS A VIOLATION OF LAW FOR ANY PERSON, UNLESS THEY ARE ACTING UNDER THE DIRECTION OF A LICENSED PROFESSIONAL ENGINEER, ARCHITECT, LANDSCAPE ARCHITECT, OR LAND SURVEYOR, TO ALTER AN ITEM IN ANY WAY. IF AN ITEM BEARING THE STAMP OF A LICENSED PROFESSIONAL IS ALTERED, THE ALTERING ENGINEER, ARCHITECT, LANDSCAPE ARCHITECT, OR LAND SURVEYOR SHALL STAMP THE DOCUMENT AND INCLUDE THE NOTATION "ALTERED BY" FOLLOWED BY THEIR SIGNATURE, THE DATE OF SUCH ALTERATION, AND A SPECIFIC DESCRIPTION OF THE ALTERATION.

AS BUILT REVISIONS DESCRIPTION OF WORK:	
<div></div>	
SIGNATURE	DATE
DOCUMENT NAME: C-GNPS	

KILLEARN ROAD IMPROVEMENTS	
KILLEARN ROAD	
TOWN OF WASHINGTON	
DUTCHESS COUNTY	
STATE OF NEW YORK	
PIN: N/A	BRIDGE/CULVERT: N/A



Engineering
& Design

ALBANY
18 Corporate Woods Blvd.
Suite 400
Albany, NY 12211
Phone: 518.459.3252
COLLIERS ENGINEERING & DESIGN, ARCHITECTURE, LANDSCAPE ARCHITECTURE, SURVEYING, ETC., P.C.

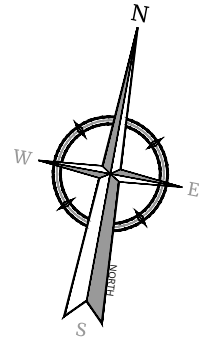
NOTE: ALL UTILITY LOCATIONS SHOWN ARE QUALITY LEVEL C (QLC).

GENERAL PLANS
(SHEET 17 OF 23)

ALL DIMENSIONS IN US SURVEY FEET UNLESS OTHERWISE NOTED

MANAGER: DAF	DESIGNED BY: JWH	DRAWN BY: ASC	CHECKED BY: SNH
PROJECT NUMBER: 25006179G			
DRAWING No.		GNPS-17	
SHEET No.		22 OF 28	
PRINT DATE: 6/16/2025			

MATCHLINE (SEE GENERAL PLANS SHEET 17 OF 23)



LIMIT OF
DISTURBANCE

EDGE OF GRAVEL
ROAD

Lands Now or Formerly of
EVAN SHATZ TRUSTEE AND
JOAN R. RICKERT TRUSTEE
Book 22023 Page 572
Tax Parcel No. 135889-6863-00-776589

Lot No. 1
Filed Map No. 8644

132 Killearn Rd

Lands Now or Formerly of
SAMANTHA NEXT DOOR LLC
Book 22016 Page 6512
Tax Parcel No. 135889-6863-00-607635

Killearn Rd

TOWN OF WASHINGTON
TOWN OF UNION VALE

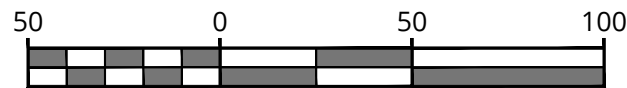
Lands Now or Formerly of
CHARLES G. BILANGINO JR
JOSEPHINE M. MIHANS
Book 22000 Page 3579
Tax Parcel No. 135400-6863-00-764426

Lands Now or Formerly of
DEBORAH C. MACDONALD AND
JEFFREY E. MACDONALD
Book 22000 Page 7980
Tax Parcel No. 135889-6863-00-768550
Lot No. 1
Filed Map No. 5720
133 Killearn Rd

Lands Now or Formerly of
CARMINE CASUCCI AND
CULLEEN WINCHCOMBE
Book 22011 Page 2015
Tax Parcel No. 135889-6863-00-785553
Lot No. 2
Filed Map No. 5720
129 Killearn Rd

Lands Now or Formerly of
DAFINA MIZRAHI
Book 22017 Page 4595
Tax Parcel No. 135889-6863-00-803560
Lot No. 3 & 4
Filed Map No. 5720
117 Killearn Rd

139 Killearn Rd



SCALE : 1" = 50'

GENERAL PLANS
SCALE: 1" = 50'

MATCHLINE (SEE GENERAL PLANS SHEET 19 OF 23)

PREPARED BY:
ON:

DRAFT



Engineering
& Design

www.colliersengineering.com

Copyright © 2025, Colliers Engineering & Design. All Rights Reserved. This drawing and all the information contained herein is authorized for use only by the party for whom the services were contracted or to whom it is verified. This drawing may not be copied, reused, modified, distributed or relied upon for any other purpose without the express written consent of Colliers Engineering & Design.

IT IS A VIOLATION OF LAW FOR ANY PERSON, UNLESS THEY ARE ACTING UNDER THE DIRECTION OF A LICENSED PROFESSIONAL ENGINEER, ARCHITECT, LANDSCAPE ARCHITECT, OR LAND SURVEYOR, TO ALTER AN ITEM IN ANY WAY. IF AN ITEM BEARING THE STAMP OF A LICENSED PROFESSIONAL IS ALTERED, THE ALTERING ENGINEER, ARCHITECT, LANDSCAPE ARCHITECT, OR LAND SURVEYOR SHALL STAMP THE DOCUMENT AND INCLUDE THE NOTATION "ALTERED BY" FOLLOWED BY THEIR SIGNATURE, THE DATE OF SUCH ALTERATION, AND A SPECIFIC DESCRIPTION OF THE ALTERATION.

AS BUILT REVISIONS
DESCRIPTION OF WORK:

SIGNATURE

DATE

DOCUMENT NAME: C-GNPS

KILLEARN ROAD IMPROVEMENTS

KILLEARN ROAD

TOWN OF WASHINGTON

DUTCHESS COUNTY

STATE OF NEW YORK

PIN: N/A

BRIDGE/CULVERT: N/A



Engineering
& Design

ALBANY
18 Corporate Woods Blvd.
Suite 400
Albany, NY 12211
Phone: 518.459.3252
COLLIERS ENGINEERING & DESIGN
ARCHITECTURE, LANDSCAPE ARCHITECTURE,
SURVEYING, P.E.

NOTE: ALL UTILITY LOCATIONS SHOWN ARE QUALITY LEVEL C (QLC).

GENERAL PLANS
(SHEET 18 OF 23)

ALL DIMENSIONS IN US SURVEY FEET UNLESS OTHERWISE NOTED

MANAGER: DAF DESIGNED BY: JWH DRAWN BY: ASC CHECKED BY: SNH

PROJECT NUMBER:
25006179G

DRAWING No. GNPS-18
SHEET No. 23 OF 28

PRINT DATE: 6/16/2025

Lands Now or Formerly of
FREDERIK G. SENKBEIL AND
ANGELA SENKBEIL
Book 22000 Page 7742
Tax Parcel No. 135889-6863-00-809591

116 Killearn Rd

Lands Now or Formerly of
MICHAEL SETARO AND DEBORAH SETARO
Book 22000 Page 5024
Tax Parcel No. 135889-6863-00-776589

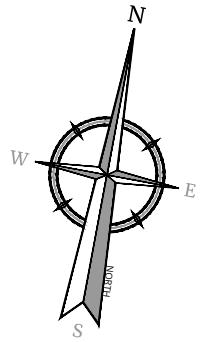
Lot No. 1B
Filed Map No. 6470

108 Killearn Rd

Lands Now or Formerly of
DONNA L. MICHAELS
Book 22016 Page 2454
Tax Parcel No. 135889-6863-00-829663

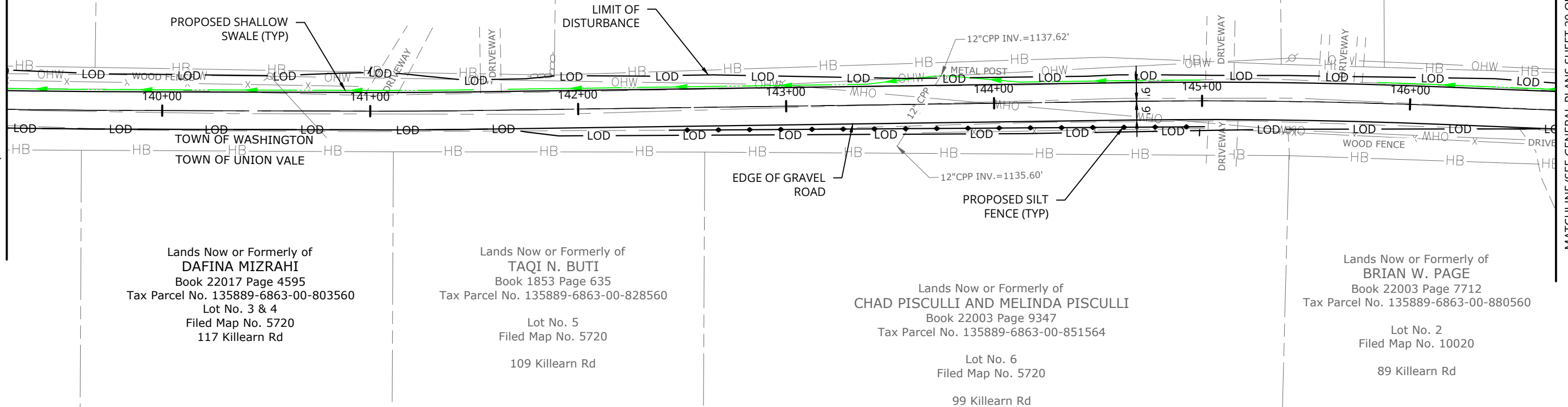
Lot No. 1A
Filed Map No. 6470

100 Killearn Rd

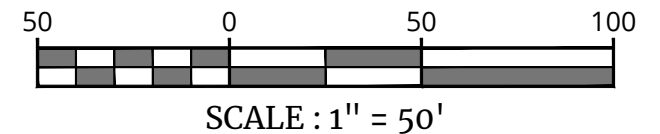


MATCHLINE (SEE GENERAL PLANS SHEET 18 OF 23)

MATCHLINE (SEE GENERAL PLANS SHEET 20 OF 23)



GENERAL PLANS
SCALE: 1" = 50'



PREPARED BY:
ON:

DRAFT



Engineering
& Design

www.colliersengineering.com

Copyright © 2025, Colliers Engineering & Design. All Rights Reserved. This drawing and all the information contained herein is authorized for use only by the party for whom the services were contracted or to whom it is verified. This drawing may not be copied, issued, disclosed, distributed or relied upon for any other purpose without the express written consent of Colliers Engineering & Design.

IT IS A VIOLATION OF LAW FOR ANY PERSON, UNLESS THEY ARE ACTING UNDER THE DIRECTION OF A LICENSED PROFESSIONAL ENGINEER, ARCHITECT, LANDSCAPE ARCHITECT, OR LAND SURVEYOR, TO ALTER AN ITEM IN ANY WAY. IF AN ITEM BEARING THE STAMP OF A LICENSED PROFESSIONAL IS ALTERED, THE ALTERING ENGINEER, ARCHITECT, LANDSCAPE ARCHITECT, OR LAND SURVEYOR SHALL STAMP THE DOCUMENT AND INCLUDE THE NOTATION "ALTERED BY" FOLLOWED BY THEIR SIGNATURE, THE DATE OF SUCH ALTERATION, AND A SPECIFIC DESCRIPTION OF THE ALTERATION.

AS BUILT REVISIONS
DESCRIPTION OF WORK:

SIGNATURE

DATE

DOCUMENT NAME: C-GNPS

KILLEARN ROAD IMPROVEMENTS

KILLEARN ROAD

TOWN OF WASHINGTON

DUTCHESS COUNTY

STATE OF NEW YORK

PIN: N/A

BRIDGE/CULVERT: N/A



Engineering
& Design

ALBANY
18 Corporate Woods Blvd.
Suite 400
Albany, NY 12211
Phone: 518.459.3252
COLLIERS ENGINEERING & DESIGN,
ARCHITECTURE, LANDSCAPE ARCHITECTURE,
SURVEYING, P.C.

NOTE: ALL UTILITY LOCATIONS SHOWN ARE QUALITY LEVEL C (QLC).

GENERAL PLANS
(SHEET 19 OF 23)

ALL DIMENSIONS IN US SURVEY FEET UNLESS OTHERWISE NOTED

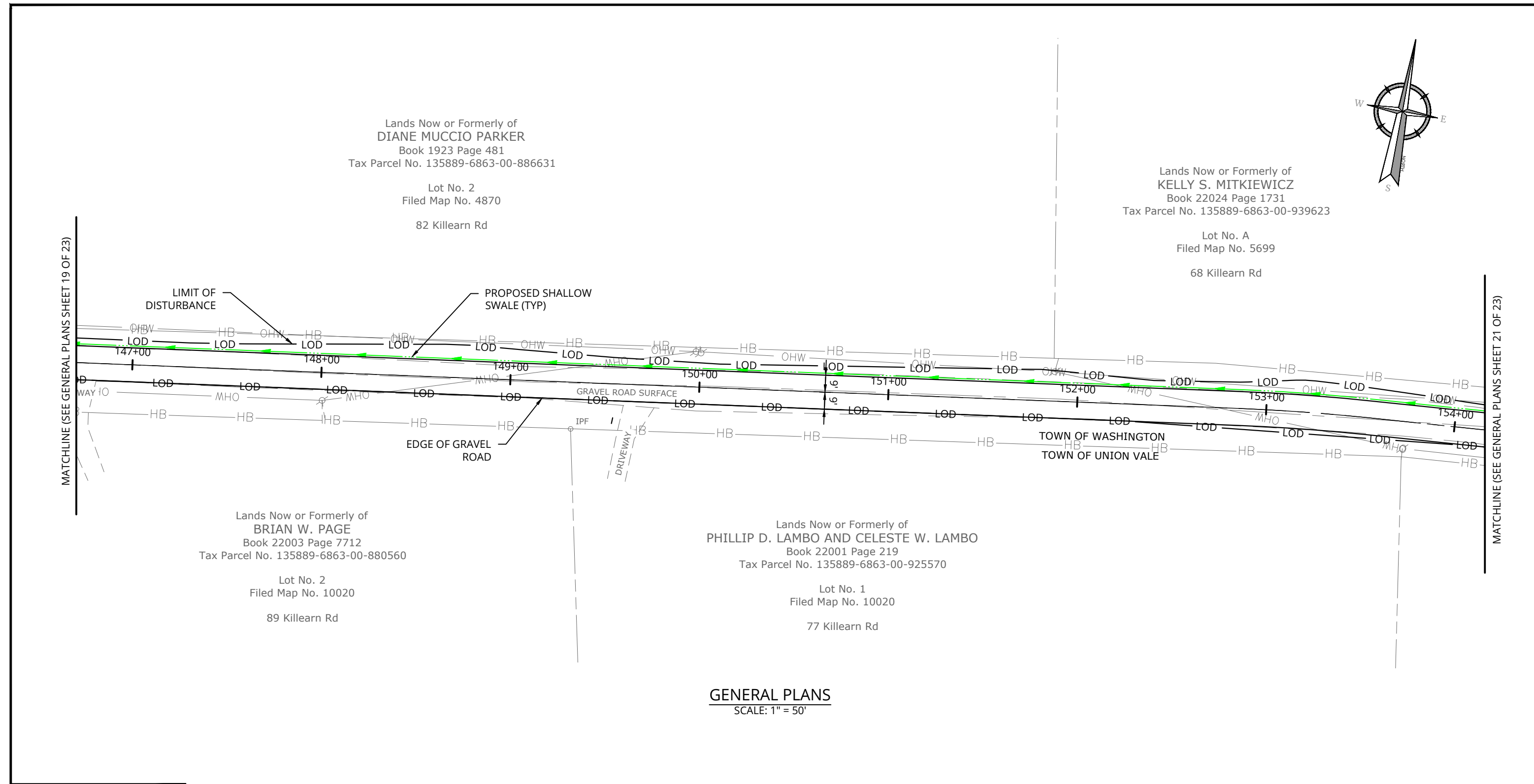
MANAGER: DAF DESIGNED BY: JWH DRAWN BY: ASC CHECKED BY: SNH

PROJECT NUMBER:
25006179G

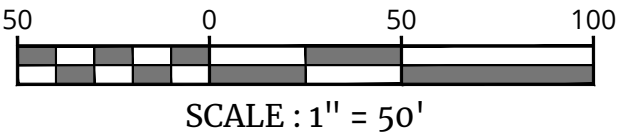
DRAWING No. GNPS-19

SHEET No. 24 OF 28

PRINT DATE: 6/16/2025



GENERAL PLANS
SCALE: 1" = 50'



PREPARED BY:
ON:

DRAFT

Colliers Engineering & Design
www.colliersengineering.com

IT IS A VIOLATION OF LAW FOR ANY PERSON, UNLESS THEY ARE ACTING UNDER THE DIRECTION OF A LICENSED PROFESSIONAL ENGINEER, ARCHITECT, LANDSCAPE ARCHITECT, OR LAND SURVEYOR, TO ALTER AN ITEM IN ANY WAY. IF AN ITEM BEARING THE STAMP OF A LICENSED PROFESSIONAL IS ALTERED, THE ALTERING ENGINEER, ARCHITECT, LANDSCAPE ARCHITECT, OR LAND SURVEYOR SHALL STAMP THE DOCUMENT AND INCLUDE THE NOTATION "ALTERED BY" FOLLOWED BY THEIR SIGNATURE, THE DATE OF SUCH ALTERATION, AND A SPECIFIC DESCRIPTION OF THE ALTERATION.

AS BUILT REVISIONS
DESCRIPTION OF WORK:

SIGNATURE _____ DATE _____

DOCUMENT NAME: C-GNPS

KILLEARN ROAD IMPROVEMENTS

KILLEARN ROAD

TOWN OF WASHINGTON

DUTCHESS COUNTY

STATE OF NEW YORK

PIN: N/A

BRIDGE/CULVERT: N/A

Colliers
Engineering & Design
ALBANY
18 Corporate Woods Blvd.
Suite 400
Albany, NY 12211
Phone: 518.459.3252
COLLIERS ENGINEERING & DESIGN, ARCHITECTURE, LANDSCAPE ARCHITECTURE, SURVEYING, P.C.

NOTE: ALL UTILITY LOCATIONS SHOWN ARE QUALITY LEVEL C (QLC).

GENERAL PLANS
(SHEET 20 OF 23)

ALL DIMENSIONS IN US SURVEY FEET UNLESS OTHERWISE NOTED

MANAGER: DAF	DESIGNED BY: JWH	DRAWN BY: ASC	CHECKED BY: SNH
-----------------	---------------------	------------------	--------------------

PROJECT NUMBER:
25006179G

DRAWING No. GNPS-20
SHEET No. 25 OF 28

PRINT DATE: 6/16/2025

Lands Now or Formerly of
KRZYSZTOF S. MITKIEWICZ AND
KELLY S. MITKIEWICZ
Book 22009 Page 3139
Tax Parcel No. 135889-6863-00-939623

Lot No. 2
Filed Map No. 4870

68 Killearn Rd

Lands Now or Formerly of
RICHARD F. MIGLIORE AND
CARMELA G. MIGLIORE
Book 22010 Page 4531
Tax Parcel No. 135889-6863-00-981632

Lot No. 1
Filed Map No. 7822

48 Killearn Rd

Lands Now or Formerly of
FRANCO DESTRO TRUSTEE AND
DAVID G. LUCKING TRUSTEE
Book 22022 Page 52719
Tax Parcel No. 135889-6863-00-054642
Lot No. 2
Filed Map No. 7822
16-22 Killearn Rd

Lands Now or Formerly of
KILLEARN ROAD LLC
Book 22021 Page 4659
Tax Parcel No. 135889-6863-00-948444
Filed Map No. 10209
35 Killearn Rd

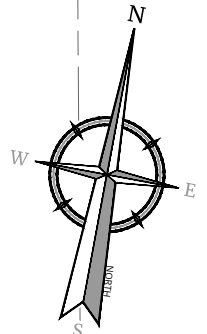
Lands Now or Formerly of
ANDREW THOMAS SHEELEY AND
ADOLOPHINE M. SHEELEY
Book 22022 Page 1226
Tax Parcel No. 135889-6863-00-936535

Lot No. 5
Filed Map No. 8812

45 Killearn Rd

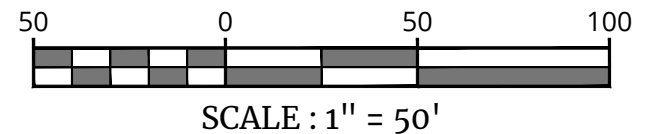
GENERAL PLANS

SCALE: 1" = 50'



MATCHLINE (SEE GENERAL PLANS SHEET 20 OF 23)

MATCHLINE (SEE GENERAL PLANS SHEET 22 OF 23)



PREPARED BY:
ON:

DRAFT



Engineering
& Design

www.colliersengineering.com

Copyright © 2025, Colliers Engineering & Design All Rights Reserved. This drawing and all the information contained herein is authorized for use only by the party for whom the services were contracted or to whom it is verified. This drawing may not be copied, issued, distributed or relied upon for any other purpose without the express written consent of Colliers Engineering & Design.

IT IS A VIOLATION OF LAW FOR ANY PERSON, UNLESS THEY ARE ACTING UNDER THE DIRECTION OF A LICENSED PROFESSIONAL ENGINEER, ARCHITECT, LANDSCAPE ARCHITECT, OR LAND SURVEYOR, TO ALTER AN ITEM IN ANY WAY. IF AN ITEM BEARING THE STAMP OF A LICENSED PROFESSIONAL IS ALTERED, THE ALTERING ENGINEER, ARCHITECT, LANDSCAPE ARCHITECT, OR LAND SURVEYOR SHALL STAMP THE DOCUMENT AND INCLUDE THE NOTATION "ALTERED BY" FOLLOWED BY THEIR SIGNATURE, THE DATE OF SUCH ALTERATION, AND A SPECIFIC DESCRIPTION OF THE ALTERATION.

AS BUILT REVISIONS
DESCRIPTION OF WORK:

SIGNATURE

DATE

DOCUMENT NAME: C-GNPS

KILLEARN ROAD IMPROVEMENTS

KILLEARN ROAD

TOWN OF WASHINGTON

DUTCHESS COUNTY

STATE OF NEW YORK

PIN: N/A

BRIDGE/CULVERT: N/A



Engineering
& Design

ALBANY
18 Corporate Woods Blvd.
Suite 400
Albany, NY 12211
Phone: 518.459.3252
COLLIERS ENGINEERING & DESIGN
ARCHITECTURE, LANDSCAPE ARCHITECTURE,
SURVEYING, P.E.

NOTE: ALL UTILITY LOCATIONS SHOWN ARE QUALITY LEVEL C (QLC).

GENERAL PLANS (SHEET 21 OF 23)

ALL DIMENSIONS IN US SURVEY FEET UNLESS OTHERWISE NOTED

MANAGER: DAF
DESIGNED BY: JWH
DRAWN BY: ASC
CHECKED BY: SNH

PROJECT NUMBER:
25006179G

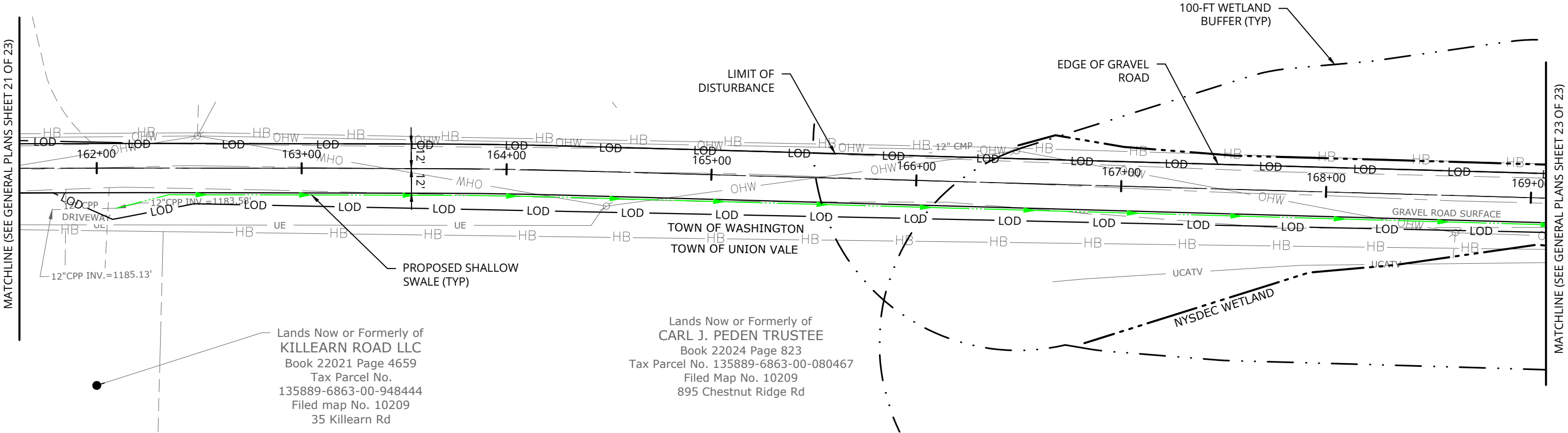
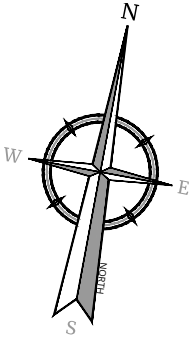
DRAWING No. GNPS-21
SHEET No. 26 OF 28

PRINT DATE: 6/16/2025

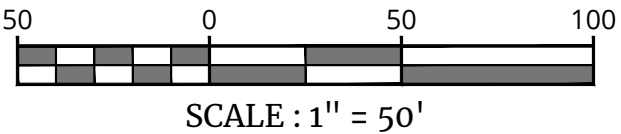
Lands Now or Formerly of
FRANCO DESTRO TRUSTEE AND
DAVID G. LUCKING TRUSTEE
Book 22022 Page 52719
Tax Parcel No. 135889-6863-00-054642

Lot No. 2
Filed Map No. 7822

16-22 Killearn Rd



GENERAL PLANS
SCALE: 1" = 50'



PREPARED BY:
ON:

DRAFT



Engineering
& Design

www.colliersengineering.com

Copyright © 2025, Colliers Engineering & Design. All Rights Reserved. This drawing and all the information contained herein is authorized for use only by the party for whom the services were contracted or to whom it is verified. This drawing may not be copied, reused, modified, distributed or relied upon for any other purpose without the express written consent of Colliers Engineering & Design.

IT IS A VIOLATION OF LAW FOR ANY PERSON, UNLESS THEY ARE ACTING UNDER THE DIRECTION OF A LICENSED PROFESSIONAL ENGINEER, ARCHITECT, LANDSCAPE ARCHITECT, OR LAND SURVEYOR, TO ALTER AN ITEM IN ANY WAY. IF AN ITEM BEARING THE STAMP OF A LICENSED PROFESSIONAL IS ALTERED, THE ALTERING ENGINEER, ARCHITECT, LANDSCAPE ARCHITECT, OR LAND SURVEYOR SHALL STAMP THE DOCUMENT AND INCLUDE THE NOTATION "ALTERED BY" FOLLOWED BY THEIR SIGNATURE, THE DATE OF SUCH ALTERATION, AND A SPECIFIC DESCRIPTION OF THE ALTERATION.

AS BUILT REVISIONS
DESCRIPTION OF WORK:

SIGNATURE

DATE

DOCUMENT NAME: C-GNPS

KILLEARN ROAD IMPROVEMENTS

KILLEARN ROAD

TOWN OF WASHINGTON

DUTCHESS COUNTY

STATE OF NEW YORK

PIN: N/A

BRIDGE/CULVERT: N/A



Engineering
& Design

ALBANY

18 Corporate Woods Blvd.

Suite 400

Albany, NY 12211

Phone: 518.459.3252

COLLIERS ENGINEERING & DESIGN,
ARCHITECTURE, LANDSCAPE ARCHITECTURE,
LAND SURVEYING, P.E.

NOTE: ALL UTILITY LOCATIONS SHOWN ARE QUALITY LEVEL C (QLC).

GENERAL PLANS
(SHEET 22 OF 23)

ALL DIMENSIONS IN US SURVEY FEET UNLESS OTHERWISE NOTED

MANAGER: DAF DESIGNED BY: JWH DRAWN BY: ASC CHECKED BY: SNH

PROJECT NUMBER:
25006179G

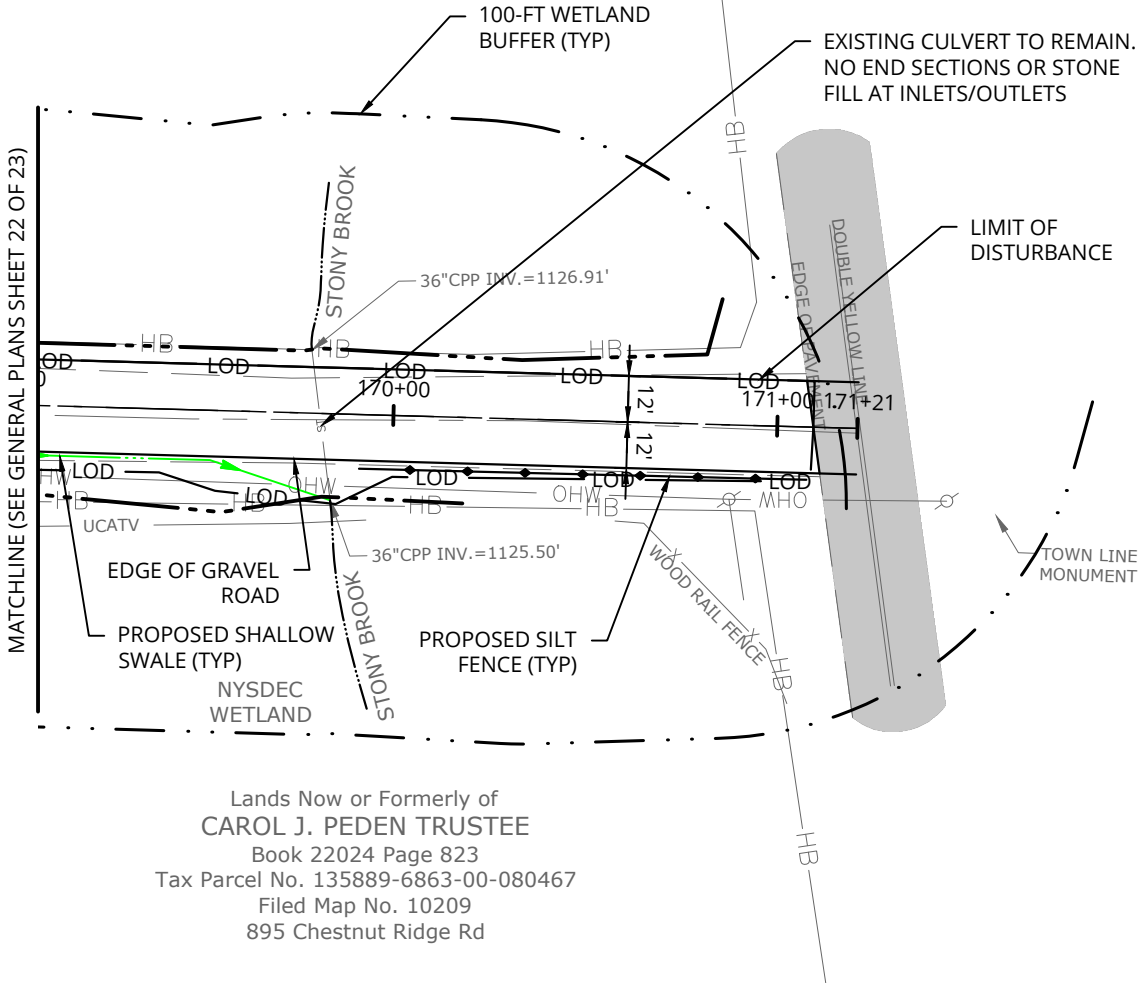
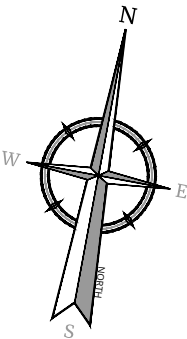
DRAWING No. GNPS-22

SHEET No. 27 OF 28

PRINT DATE: 6/16/2025

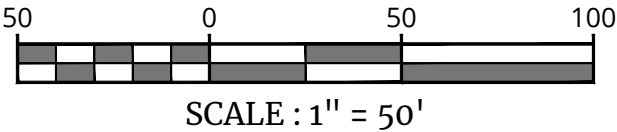
Lands Now or Formerly of
FRANCO DESTRO TRUSTEE AND
DAVID G. LUCKING TRUSTEE
Book 22022 Page 52719
Tax Parcel No. 135889-6863-00-054642

Lot No. 2
Filed Map No. 7822
16-22 Killearn Rd



Lands Now or Formerly of
CAROL J. PEDEN TRUSTEE
Book 22024 Page 823
Tax Parcel No. 135889-6863-00-080467
Filed Map No. 10209
895 Chestnut Ridge Rd

GENERAL PLANS
SCALE: 1" = 50'



PREPARED BY:
ON:

DRAFT



Engineering
& Design

www.colliersengineering.com

Copyright © 2025, Colliers Engineering & Design. All Rights Reserved. This drawing and all the information contained herein is authorized for use only by the party for whom the services were contracted or to whom it is verified. This drawing may not be copied, reused, modified, distributed or relied upon for any other purpose without the express written consent of Colliers Engineering & Design.

IT IS A VIOLATION OF LAW FOR ANY PERSON, UNLESS THEY ARE ACTING UNDER THE DIRECTION OF A LICENSED PROFESSIONAL ENGINEER, ARCHITECT, LANDSCAPE ARCHITECT, OR LAND SURVEYOR, TO ALTER AN ITEM IN ANY WAY. IF AN ITEM BEARING THE STAMP OF A LICENSED PROFESSIONAL IS ALTERED, THE ALTERING ENGINEER, ARCHITECT, LANDSCAPE ARCHITECT, OR LAND SURVEYOR SHALL STAMP THE DOCUMENT AND INCLUDE THE NOTATION "ALTERED BY" FOLLOWED BY THEIR SIGNATURE, THE DATE OF SUCH ALTERATION, AND A SPECIFIC DESCRIPTION OF THE ALTERATION.

AS BUILT REVISIONS
DESCRIPTION OF WORK:

SIGNATURE

DATE

DOCUMENT NAME: C-GNPS

KILLEARN ROAD IMPROVEMENTS

KILLEARN ROAD

TOWN OF WASHINGTON

DUTCHESS COUNTY

STATE OF NEW YORK

PIN: N/A

BRIDGE/CULVERT: N/A



Engineering
& Design

ALBANY

18 Corporate Woods Blvd.

Suite 400

Albany, NY 12211

Phone: 518.459.3252

COLLIERS ENGINEERING & DESIGN,
ARCHITECTURE, LANDSCAPE ARCHITECTURE,
SURVEYING, P.C.

NOTE: ALL UTILITY LOCATIONS SHOWN ARE QUALITY LEVEL C (QLC).

GENERAL PLANS
(SHEET 23 OF 23)

ALL DIMENSIONS IN US SURVEY FEET UNLESS OTHERWISE NOTED

MANAGER: DAF

DESIGNED BY: JWH

DRAWN BY: ASC

CHECKED BY: SNH

PROJECT NUMBER:
25006179G

DRAWING No. GNPS-23

SHEET No. 28 OF 28

PRINT DATE: 6/16/2025