

Project No. 56286

**Edward Jones Signage Package**

3699 Rt. 44 (Suite 1)

Millbrook, NY 12545

Edward Jones



**LEGEND**

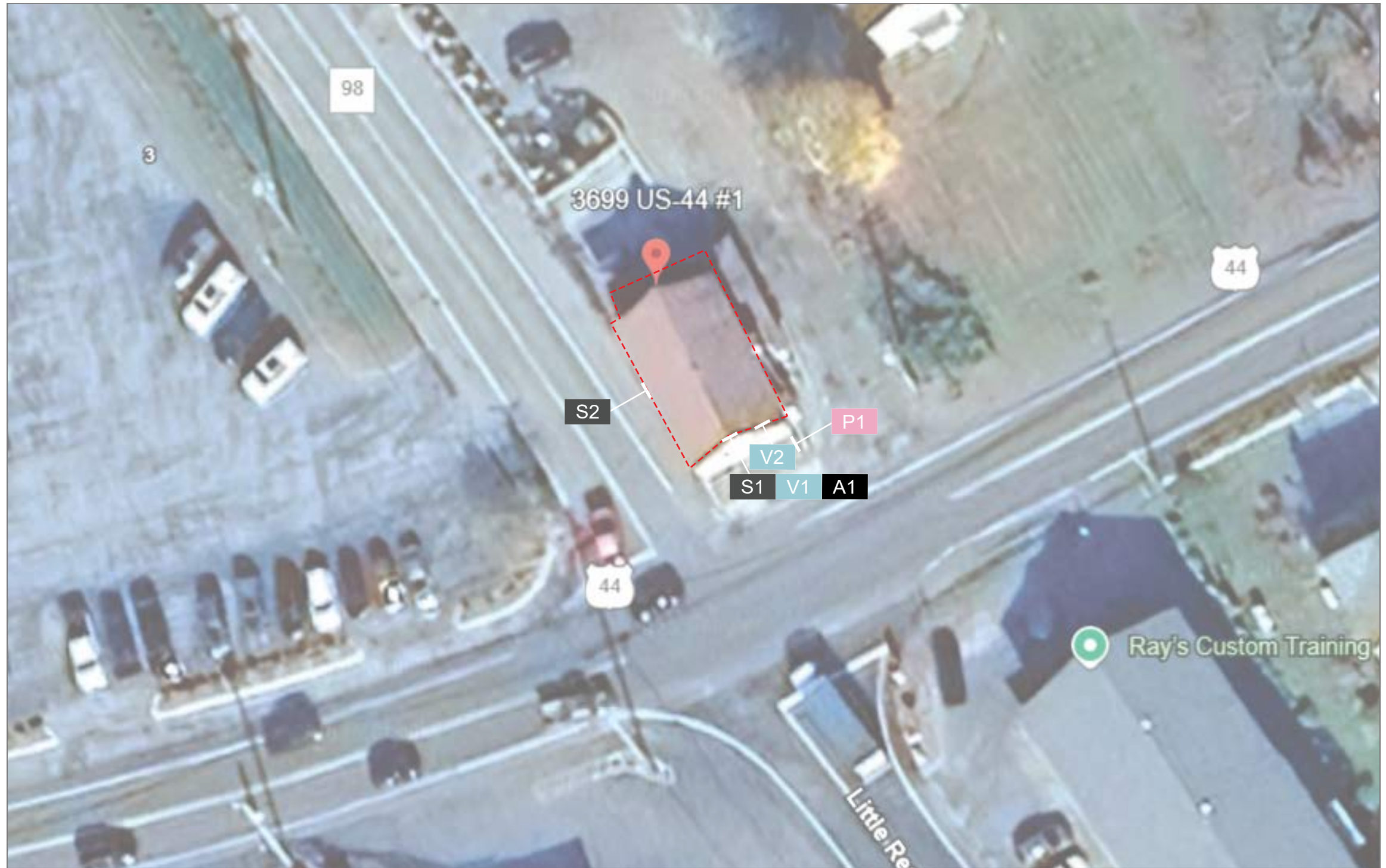
<b>S1</b>	(South) Front Elevation - Wall Sign
<b>S2</b>	(West) Side Elevation - Wall Sign
<b>A1</b>	Awning
<b>P1</b>	Pylon Sign
<b>V1</b>	Entry Door Vinyl
<b>V2</b>	Window Vinyl

**SIGNAGE CRITERIA**

**Code:**  
 Wall signage and awnings cannot exceed 10% of wall area, not to exceed 100 sq ft. Window vinyl cannot cover more than 30% of window area

**Landlord restrictions:**  
 N/A

<b>S1</b>	(25' x 25') x 10% = 62.5 SF Allowed
<b>S2</b>	(25' x 55') x 10% = 137.5 SF 100 SF Allowed
<b>A1</b>	(25' x 25') x 10% = 62.5 SF Allowed
<b>P1</b>	N/A - Face Replacement
<b>V1</b>	N/A
<b>V2</b>	(66.5" x 67.125") x 30% = 9.29 SF Allowed



425 N Martingale Rd  
 18th Floor  
 Schaumburg, IL 60173  
 Office 847.301.0510  
 identiti.net

**W.O. No.** 56286  
**Address** 3699 Rt. 44 (Suite 1)  
**City, ST** Millbrook, NY 12545

**Orig. Draft** 02.03.2025  
**Project Mgr.** N/A  
**Designer** IDV

**Rev. Art** N/A  
**Rev. Date** 00.00.0000  
**Page Rev.** 000

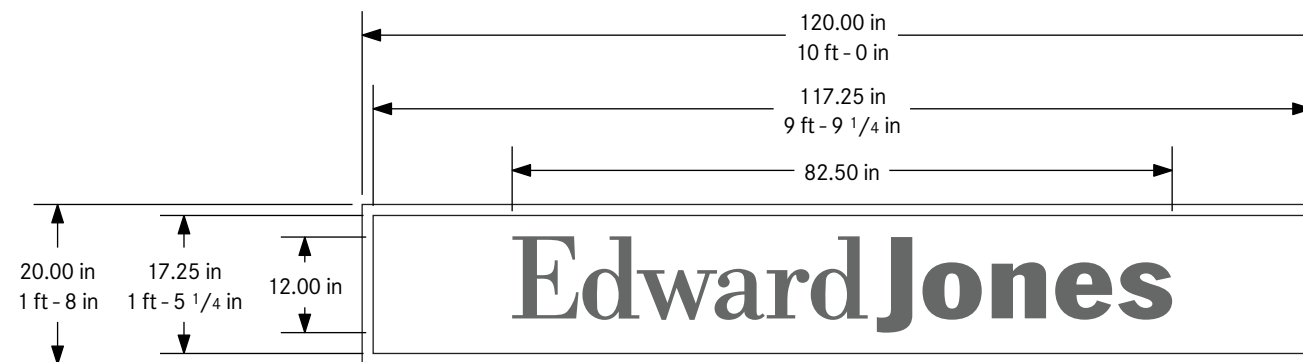
Customer

**Edward Jones**

North



Plan View:  
**Site Plan**  
 Exterior



SCALE: 1/2" = 12"



425 N Martingale Rd  
18th Floor  
Schaumburg, IL 60173  
Office 847.301.0510  
identiti.net

W.O. No. 56286  
Address 3699 Rt. 44 (Suite 1)  
City, ST Millbrook, NY 12545

Orig. Draft 02.03.2025  
Project Mgr. N/A  
Designer IDV

Rev. Art Nariel Jon  
Rev. Date 03.25.2025  
Page Rev. 002

Color Palette

- Face: White Lexan
- Cabinet: Painted PMS White
- Retainers: Painted PMS White

- Vinyl: 3M Opaque Dark Gray 7725-41
- N/A
- N/A

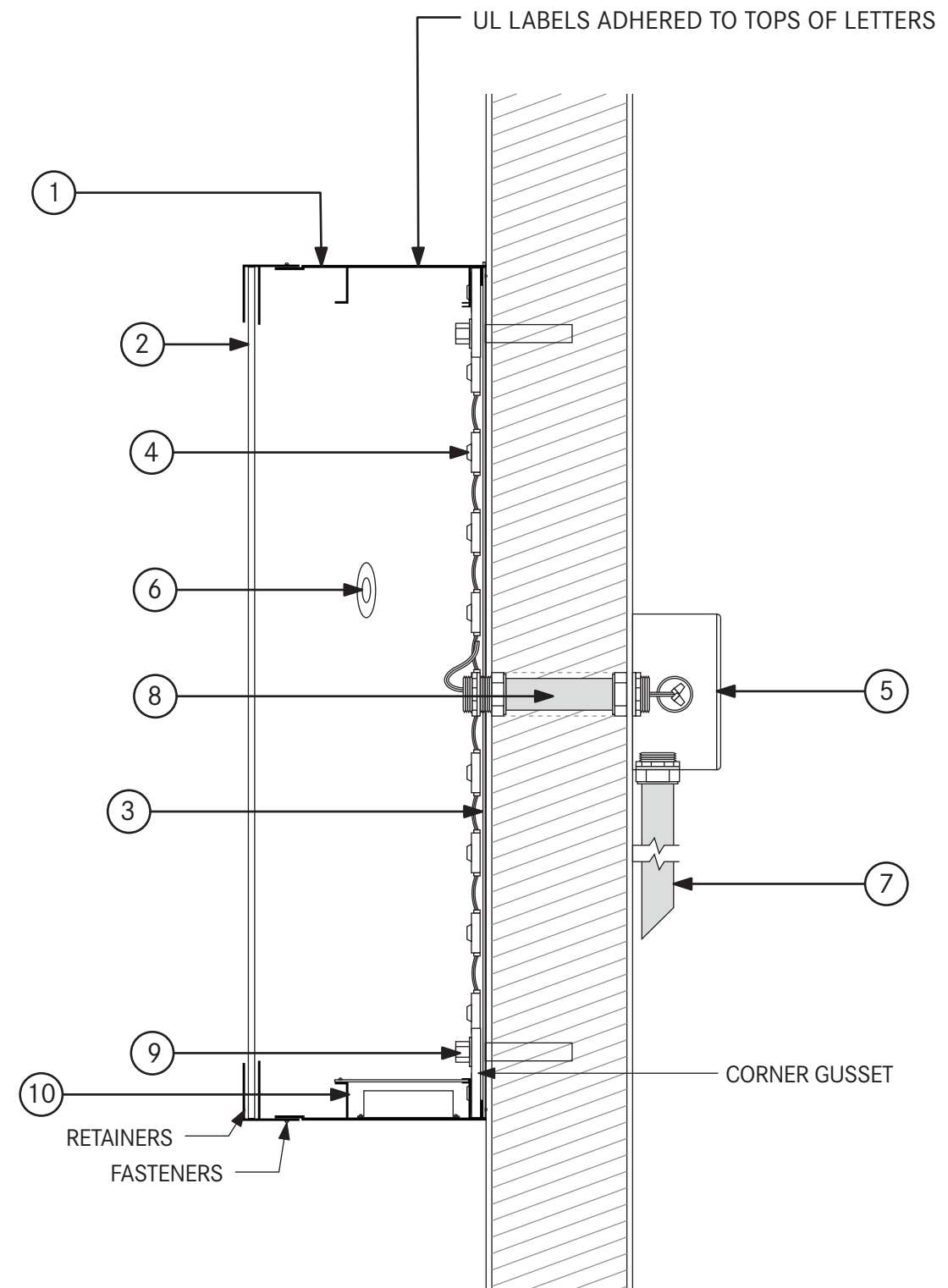
Sign Type:  
S/S LED Alum. Cabinet and  
Lexan Panel w/ Applied Vinyl  
- Front-Lit, Flush Mounted

Signage:  
**S1**  
South Elevation

# Edward Jones

## CABINET SPECIFICATIONS

- ① 0.125 ALUMINUM CABINET (6.5" DEPTH):  
PAINTED PMS WHITE
- ② 0.177 WHITE LEXAN W/ FIRST SURFACE APPLIED VINYL:  
OPAQUE 3M 7725-41 DARK GRAY
- ③ 0.063 ALUMINUM BACK:  
PRECOAT WHITE FINISH
- ④ LED UNITS (WHITE):  
ALL LEDS TERMINATED WITH WIRENUTS
- ⑤ UL LISTED HOUSING:  
SECONDARY WIRING SPLICE POINT (WHEN NEEDED)
- ⑥ DISCONNECT SWITCH FOR DEDICATED PRIMARY POWER CIRCUIT  
MOUNTED ON THE SIDE OF CABINET
- ⑦ PRIMARY POWER CIRCUIT (PROVIDED/PERMITTED BY OTHERS)  
TO BE PLACED WITHIN 5 FEET OF CENTER OF SIGN
- ⑧ CONDUIT:  
SECONDARY ELECTRICAL RUN (WHEN NEEDED)
- ⑨ MOUNTING HARDWARE: MOUNTING BOLTS THROUGH CORNER  
GUSSETS IN SIGN CABINET
- ⑩ POWER SUPPLY WITH LID/ INTERNAL WIREWAY



SCALE: NTS



425 N Martingale Rd  
18th Floor  
Schaumburg, IL 60173  
Office 847.301.0510  
identiti.net

W.O. No. 56286  
Address 3699 Rt. 44 (Suite 1)  
City, ST Millbrook, NY 12545

Orig. Draft 02.03.2025  
Project Mgr. N/A  
Designer IDV

Rev. Art Nariel Jon  
Rev. Date 03.25.2025  
Page Rev. 002

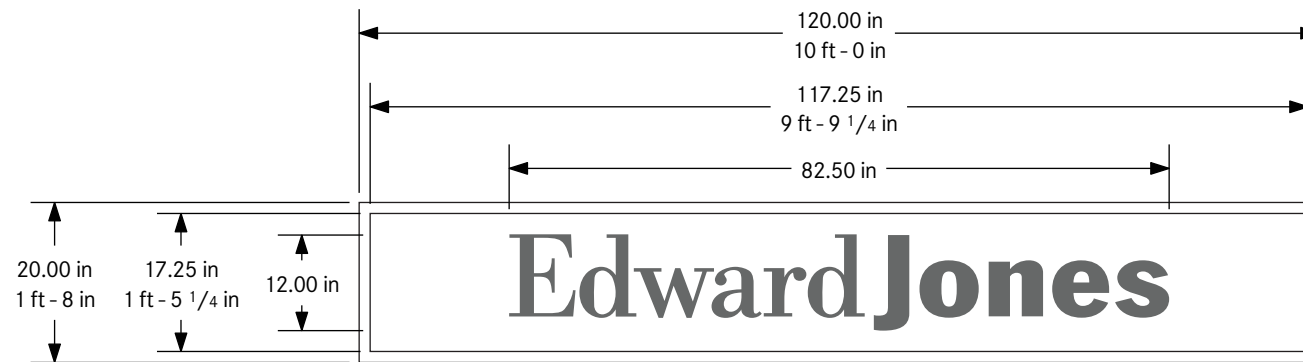
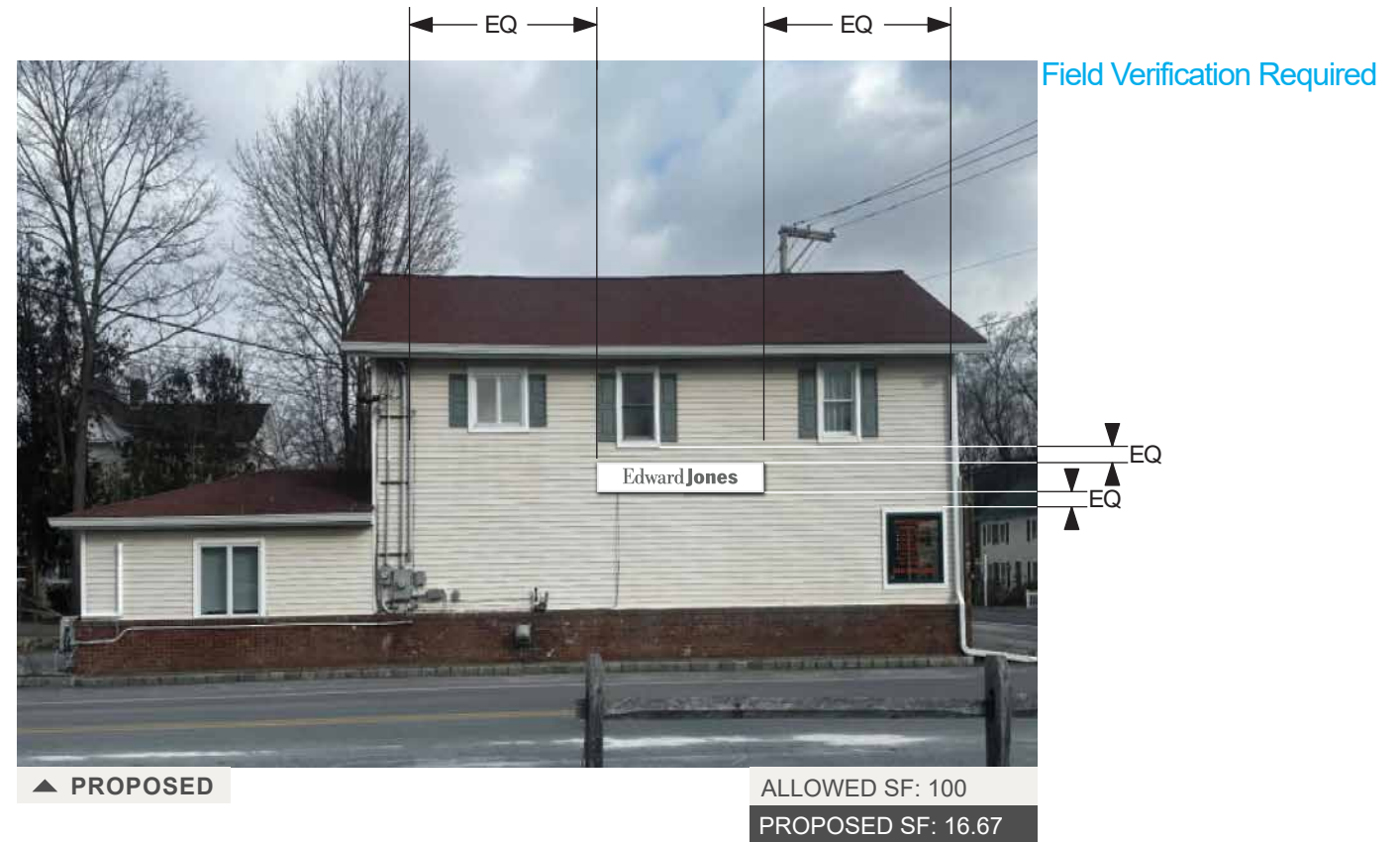
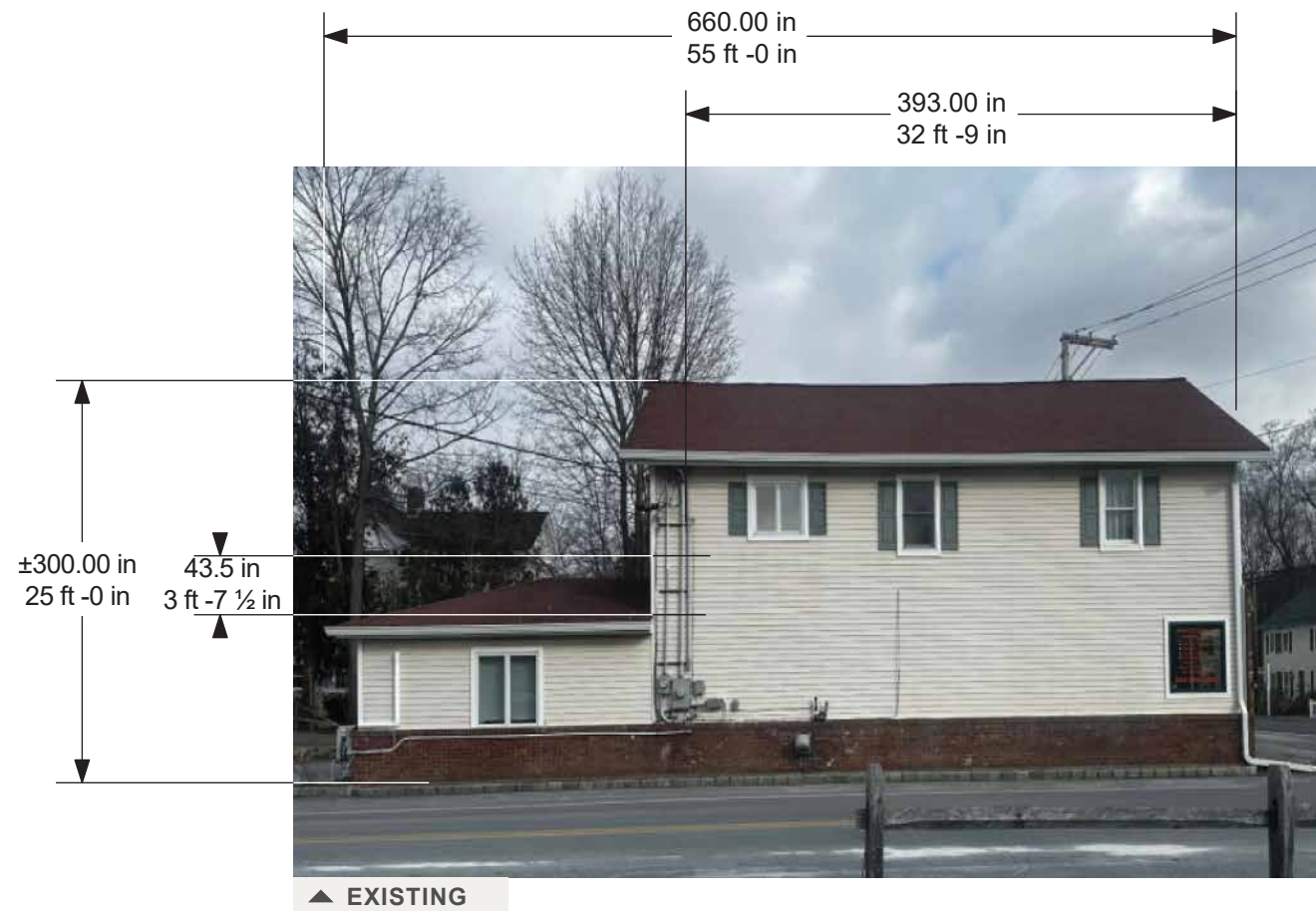
### Color Palette

Face: White Lexan  
Cabinet: Painted PMS White  
Retainers: Painted PMS White

Vinyl: 3M Opaque Dark Gray 7725-41  
N/A  
N/A

Sign Type:  
S/S LED Alum. Cabinet and  
Lexan Panel w/ Applied Vinyl  
- Front-Lit, Flush Mounted

Signage:  
**S1**  
Sign Specifications



SCALE: 1/2" = 12"



425 N Martingale Rd  
18th Floor  
Schaumburg, IL 60173  
Office 847.301.0510  
identiti.net

W.O. No. 56286  
Address 3699 Rt. 44 (Suite 1)  
City, ST Millbrook, NY 12545

Orig. Draft 02.03.2025  
Project Mgr. N/A  
Designer IDV

Rev. Art Nariel Jon  
Rev. Date 03.25.2025  
Page Rev. 002

Color Palette

Face: White Lexan  
Cabinet: Painted PMS White  
Retainers: Painted PMS White

Vinyl: 3M Opaque Dark Gray 7725-41  
N/A  
N/A

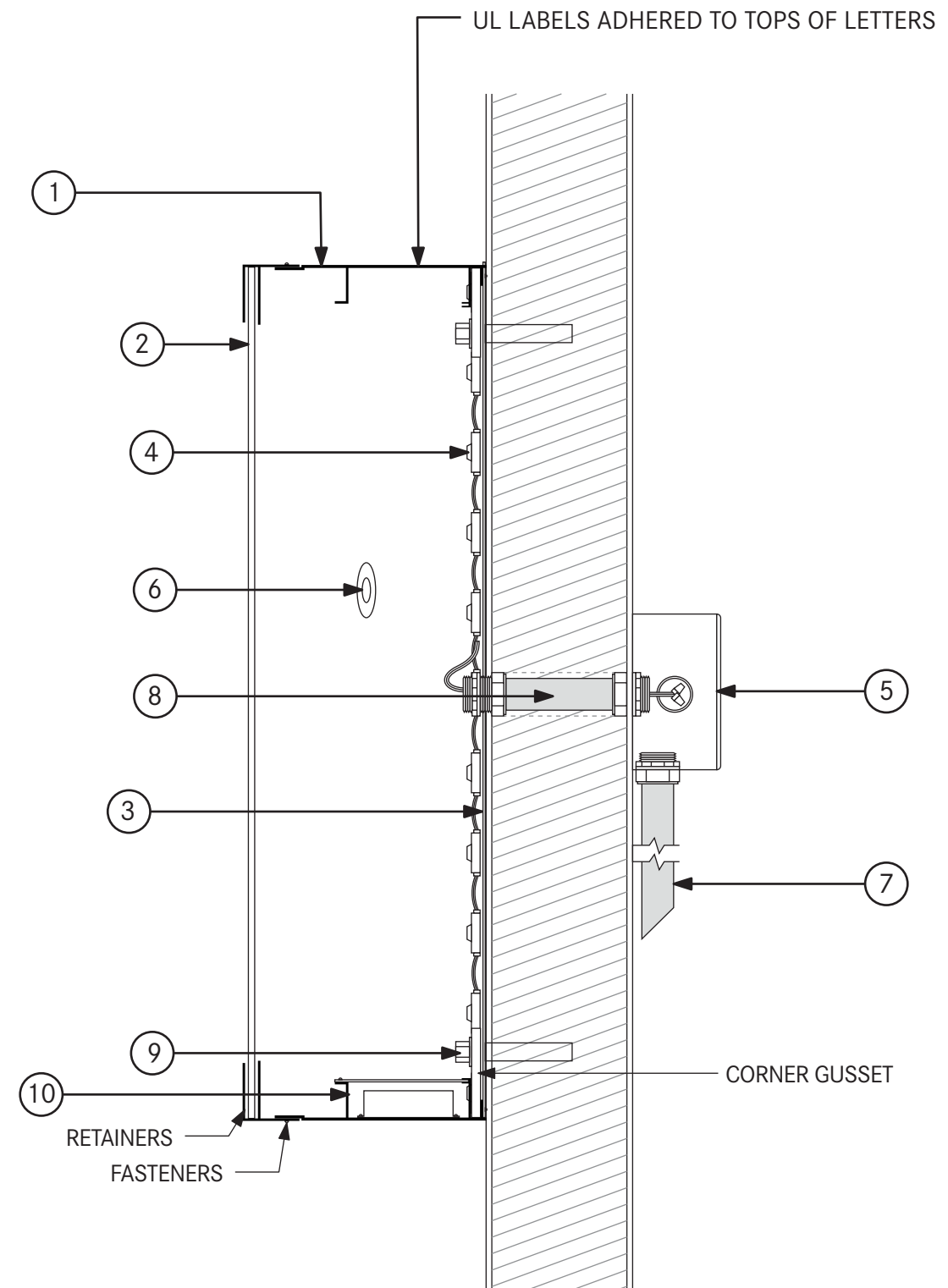
Sign Type:  
S/S LED Alum. Cabinet and  
Lexan Panel w/ Applied Vinyl  
- Front-Lit, Flush Mounted

Signage:  
S2  
West Elevation

# Edward Jones

## CABINET SPECIFICATIONS

- ① 0.125 ALUMINUM CABINET (6.5" DEPTH):  
PAINTED PMS WHITE
- ② 0.177 WHITE LEXAN W/ FIRST SURFACE APPLIED VINYL:  
OPAQUE 3M 7725-41 DARK GRAY
- ③ 0.063 ALUMINUM BACK:  
PRECOAT WHITE FINISH
- ④ LED UNITS (WHITE):  
ALL LEDS TERMINATED WITH WIRENUTS
- ⑤ UL LISTED HOUSING:  
SECONDARY WIRING SPLICE POINT (WHEN NEEDED)
- ⑥ DISCONNECT SWITCH FOR DEDICATED PRIMARY POWER CIRCUIT  
MOUNTED ON THE SIDE OF CABINET
- ⑦ PRIMARY POWER CIRCUIT (PROVIDED/PERMITTED BY OTHERS)  
TO BE PLACED WITHIN 5 FEET OF CENTER OF SIGN
- ⑧ CONDUIT:  
SECONDARY ELECTRICAL RUN (WHEN NEEDED)
- ⑨ MOUNTING HARDWARE: MOUNTING BOLTS THROUGH CORNER  
GUSSETS IN SIGN CABINET
- ⑩ POWER SUPPLY WITH LID/ INTERNAL WIREWAY



SCALE: NTS



425 N Martingale Rd  
18th Floor  
Schaumburg, IL 60173  
Office 847.301.0510  
identiti.net

W.O. No. 56286  
Address 3699 Rt. 44 (Suite 1)  
City, ST Millbrook, NY 12545

Orig. Draft 02.03.2025  
Project Mgr. N/A  
Designer IDV

Rev. Art Nariel Jon  
Rev. Date 03.25.2025  
Page Rev. 002

Color Palette

- Face: White Lexan
- Cabinet: Painted PMS White
- Retainers: Painted PMS White

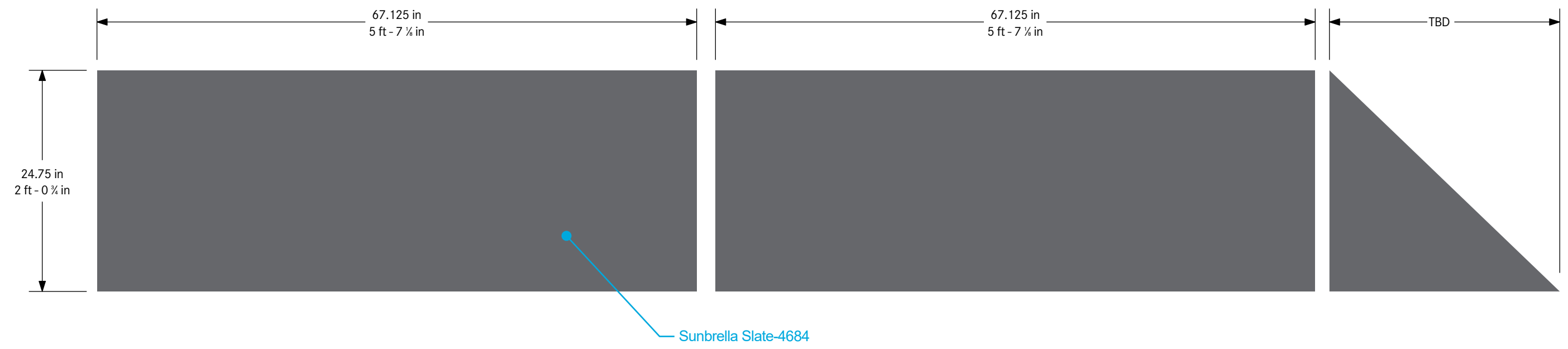
- Vinyl: 3M Opaque Dark Gray 7725-41
- N/A
- N/A

Sign Type:  
S/S LED Alum. Cabinet and  
Lexan Panel w/ Applied Vinyl  
- Front-Lit, Flush Mounted

Signage:  
**S2**  
Sign Specifications

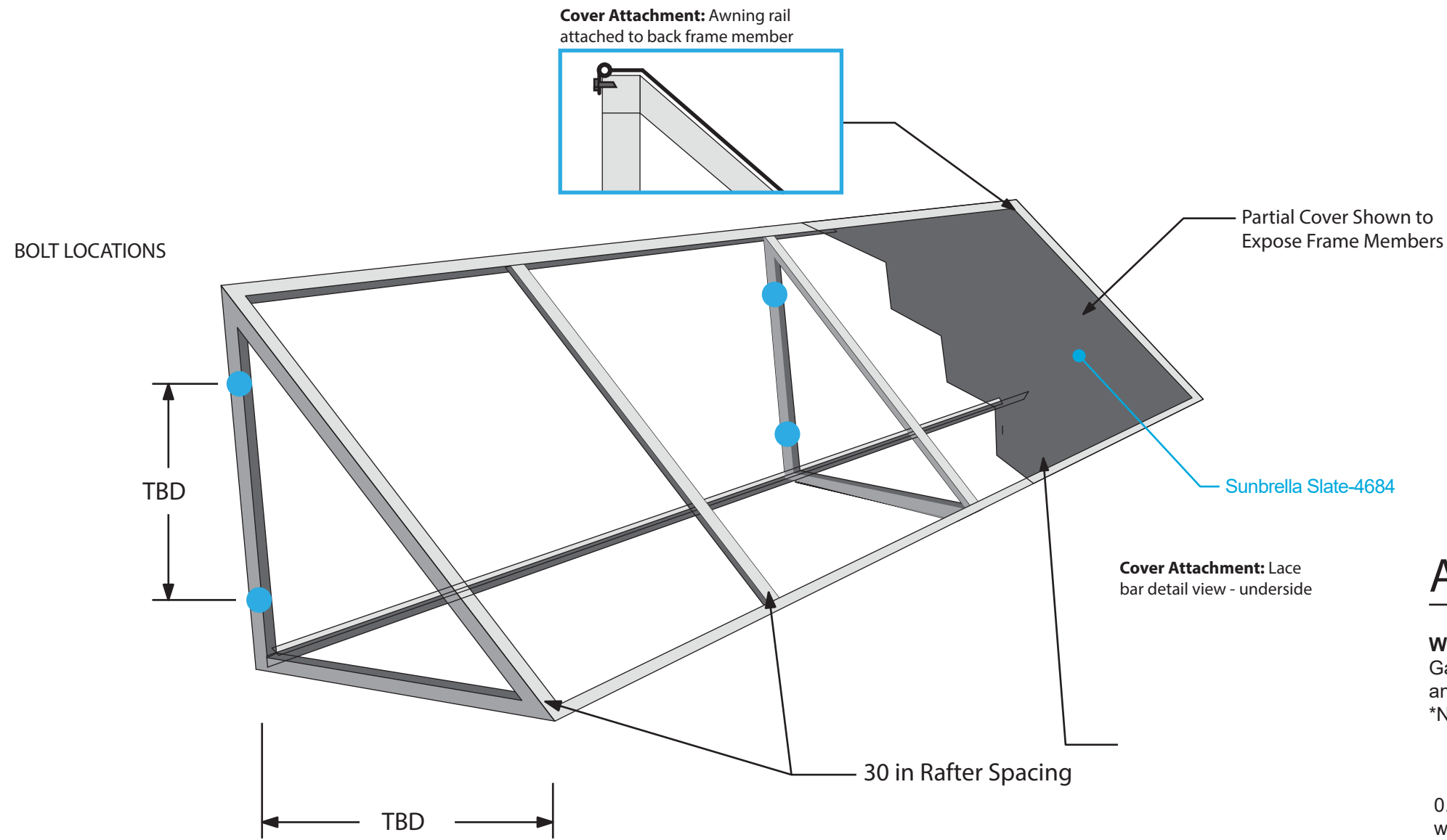


Awnings are subject to code allowance  
Field Verification Required



SCALE: 1" = 12"

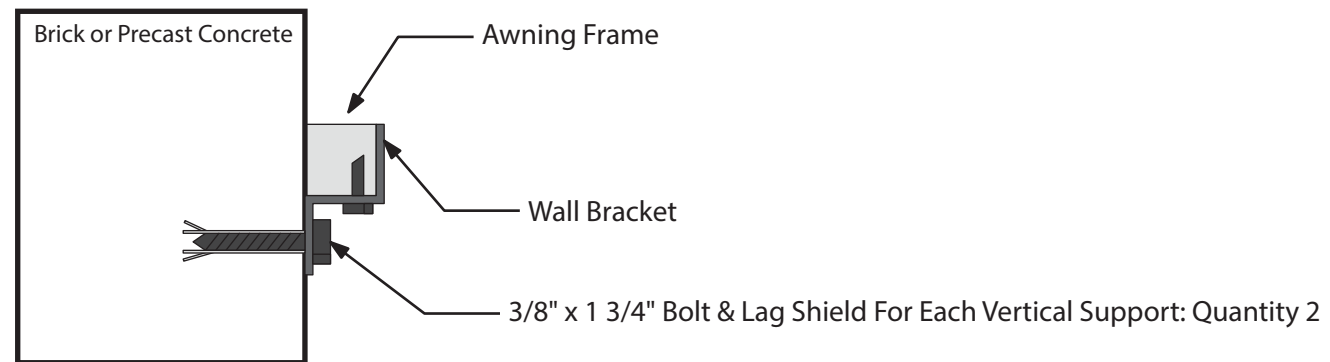
	425 N Martingale Rd 18th Floor Schaumburg, IL 60173 Office 847.301.0510 identiti.net	W.O. No. 56286 Address 3699 Rt. 44 (Suite 1) City, ST Millbrook, NY 12545	Orig. Draft 02.03.2025 Project Mgr. N/A Designer IDV	Rev. Art EG Rev. Date 03.14.2025 Page Rev. 001	Color Palette ■ Awning: Sunbrella Black	Sign Type: Black Sunbrella Awning Mounted into Metal Structure	Signage: <b>A1</b> Awning
	THIS SIGN DESIGN IS EXCLUSIVE PROPERTY OF IDENTITI RESOURCES, LTD., AND IS THE RESULT OF THE ORIGINAL AND CREATIVE WORK OF IT'S EMPLOYEES. THIS DRAWING IS SUBMITTED TO THE CUSTOMER FOR THE SOLE PURPOSE OF PURCHASE OF THE DESIGN OR SIGNAGE MANUFACTURED TO THIS DESIGN, BY IDENTITI RESOURCES, LTD. DISTRIBUTION TO OR USE OF THIS SIGN DESIGN BY ANYONE OUTSIDE OF THE CUSTOMER'S ORGANIZATION, WITHOUT EXPRESSED, WRITTEN AUTHORIZATION BY IDENTITI RESOURCES, LTD. IS PROHIBITED.						



## AWNING DETAILS

**Welded Frame Construction consists of:** 1" Square 16 gauge Gatorshield galvanized steel tube - Painted Black. All tubing angle cut or knotted to fit. All tubing welded fully around.  
\*No Tack Welding

0.063" Aluminum Standing Seam surface w/batten covers at seam risers



SCALE: 1 1/2" = 12"



425 N Martingale Rd  
18th Floor  
Schaumburg, IL 60173  
Office 847.301.0510  
identiti.net

W.O. No. 56286  
Address 3699 Rt. 44 (Suite 1)  
City, ST Millbrook, NY 12545

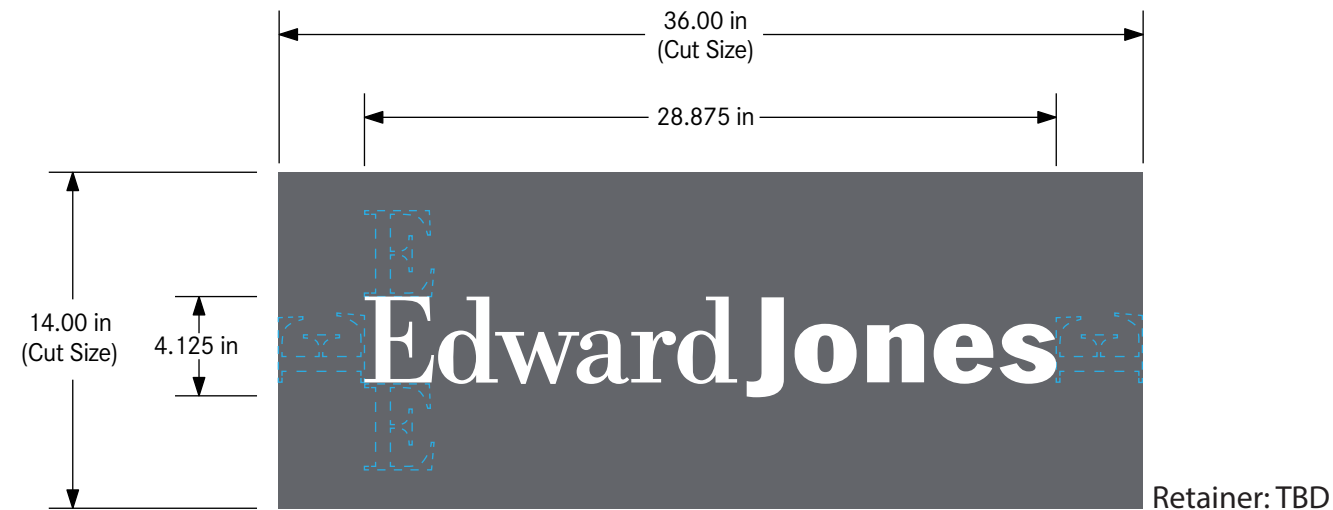
Orig. Draft 02.03.2025  
Project Mgr. N/A  
Designer IDV

Rev. Art EG  
Rev. Date 03.14.2025  
Page Rev. 001

Color Palette  
■ Awning: Sunbrella Black

Sign Type:  
Black Sunbrella Awning  
Mounted into Metal Structure

Signage:  
**A1**  
Sign Specifications



SCALE: 1 1/2" = 12"



425 N Martingale Rd  
18th Floor  
Schaumburg, IL 60173  
Office 847.301.0510  
identiti.net

W.O. No. 56286  
Address 3699 Rt. 44 (Suite 1)  
City, ST Millbrook, NY 12545

Orig. Draft 02.03.2025  
Project Mgr. N/A  
Designer IDV

Rev. Art N/A  
Rev. Date 00.00.0000  
Page Rev. 000

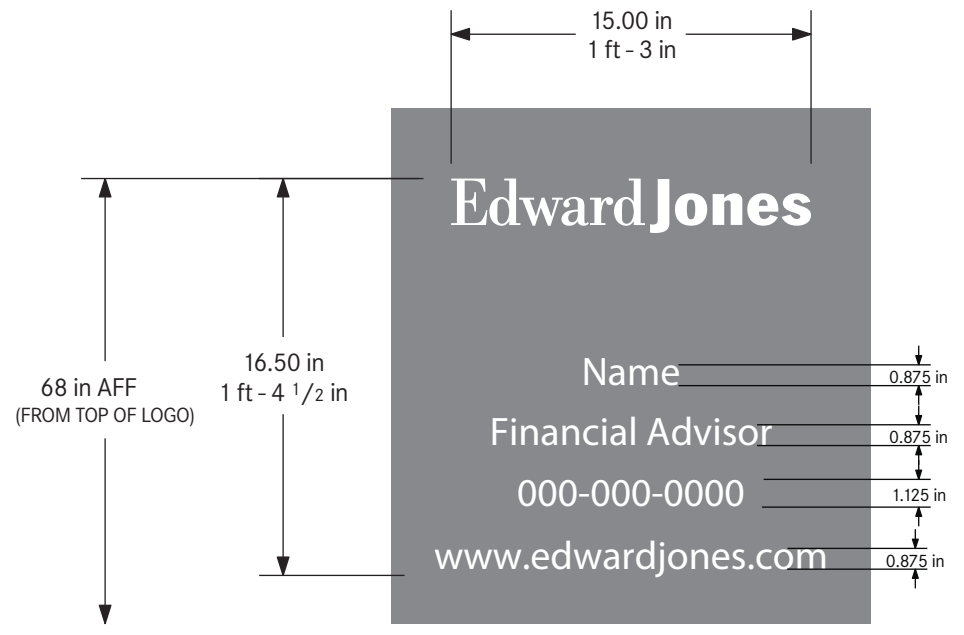
Color Palette  
 3M 7725-10 White  
 Panel: Painted PMS Cool Gray 10c

Sign Type:  
(Qty - 2) Aluminum Panel w/  
Applied Vinyl First Surface  
Hanging on Existing Poles

Signage:  
P1  
Pylon Sign

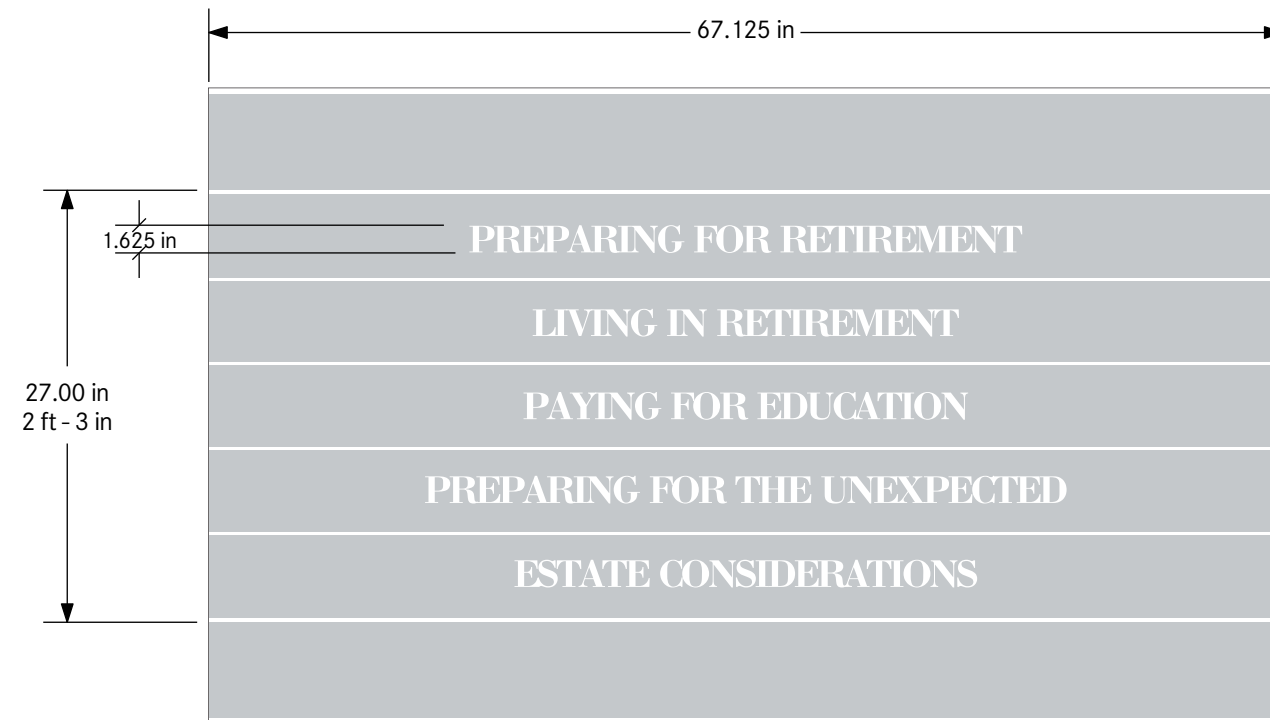
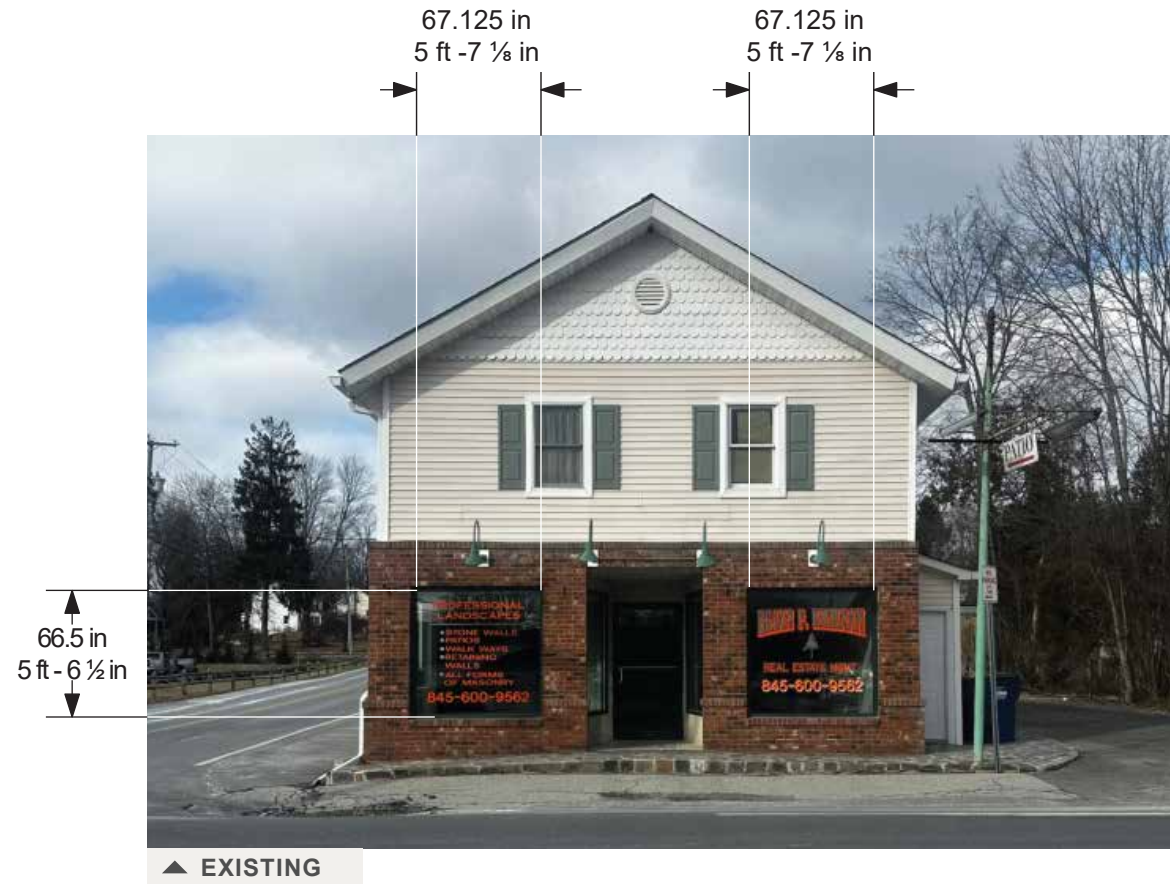


\*\*FA RESPONSIBLE TO ORDER DOOR VINYL THROUGH ONLINE WEB CATALOG 094491\*\*



SCALE: 1 1/2" = 12"

	425 N Martingale Rd 18th Floor Schaumburg, IL 60173 Office 847.301.0510 identiti.net	W.O. No. 56286 Address 3699 Rt. 44 (Suite 1) City, ST Millbrook, NY 12545	Orig. Draft 02.03.2025 Project Mgr. N/A Designer IDV	Rev. Art N/A Rev. Date 00.00.0000 Page Rev. 000	Color Palette  3M 7725-10 White	Sign Type: Applied Vinyl First Surface	Signage:  Door Vinyl
	THIS SIGN DESIGN IS EXCLUSIVE PROPERTY OF IDENTITI RESOURCES, LTD., AND IS THE RESULT OF THE ORIGINAL AND CREATIVE WORK OF IT'S EMPLOYEES. THIS DRAWING IS SUBMITTED TO THE CUSTOMER FOR THE SOLE PURPOSE OF PURCHASE OF THE DESIGN OR SIGNAGE MANUFACTURED TO THIS DESIGN, BY IDENTITI RESOURCES, LTD. DISTRIBUTION TO OR USE OF THIS SIGN DESIGN BY ANYONE OUTSIDE OF THE CUSTOMER'S ORGANIZATION, WITHOUT EXPRESSED, WRITTEN AUTHORIZATION BY IDENTITI RESOURCES, LTD. IS PROHIBITED.						



SCALE: 1" = 12"



425 N Martingale Rd  
18th Floor  
Schaumburg, IL 60173  
Office 847.301.0510  
identiti.net

W.O. No. 56286  
Address 3699 Rt. 44 (Suite 1)  
City, ST Millbrook, NY 12545

Orig. Draft 02.03.2025  
Project Mgr. N/A  
Designer IDV

Rev. Art N/A  
Rev. Date 00.00.0000  
Page Rev. 000

Color Palette  
3M 7725-10 White

Sign Type:  
Applied Vinyl  
First Surface

Signage:  
V2  
Window Vinyl