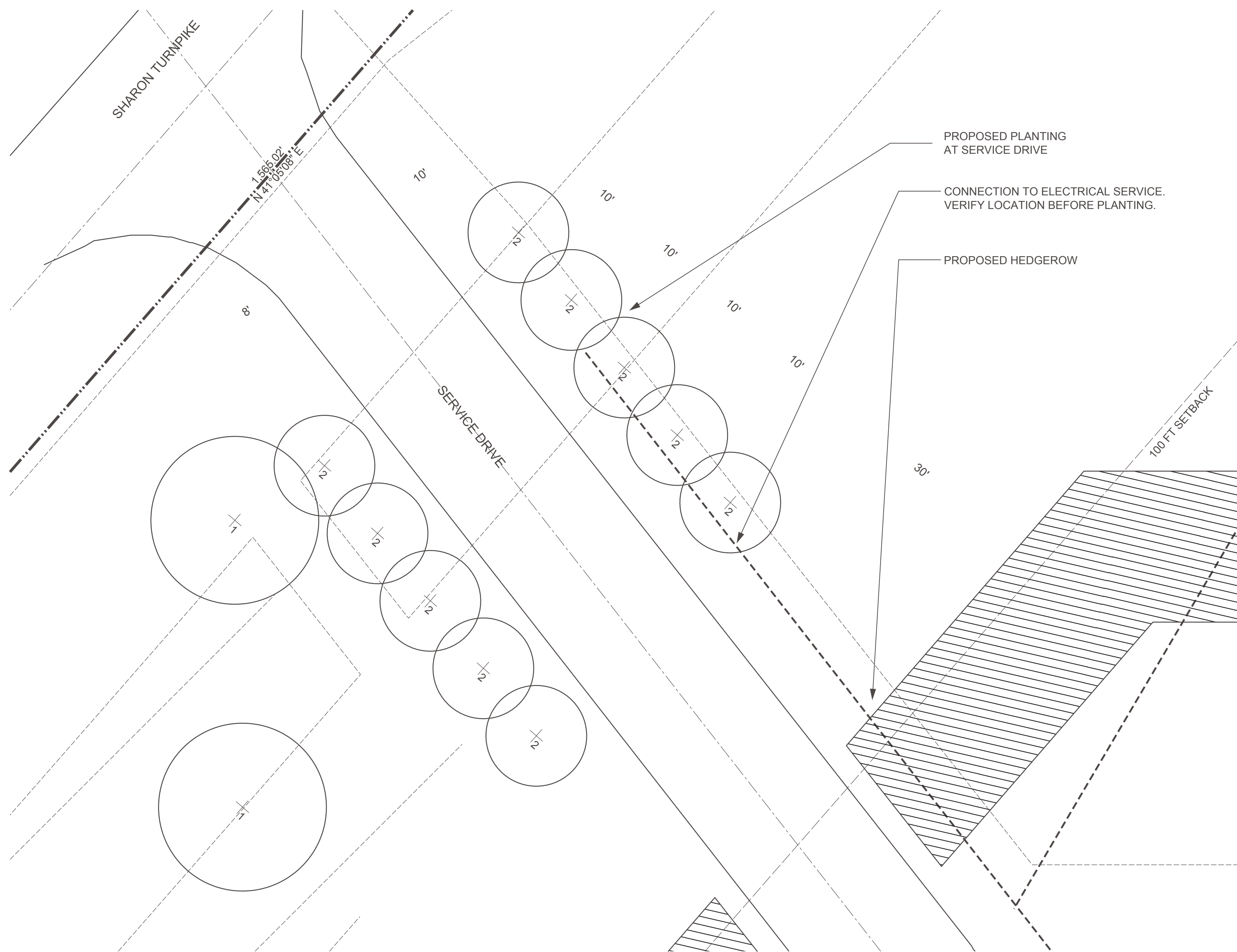


**01 PLANTING PLAN FOR TYPICAL 50 FT SECTION OF HEDGEROW**  
SCALE: 1/8" = 1' - 0"



**02 PLANTING DETAIL AT SERVICE DRIVE**  
SCALE: 1/8" = 1' - 0"

Planting Key for Native Hedgerow					
KEY	Botanical Name	Common Name	Type	Mature Size	Benefits
A	<i>Lindera Benzoin</i>	spice bush	native deciduous shrub	6-12' h and w	attracts birds & pollinators, yellow flowers, red fruit, yellow fall color, deer resistant, need male and female plants
A	<i>Sambucus canadensis</i>	elderberry	native deciduous shrub	5-12' h and w	attracts birds & butterflies, white flowers & black berries, forms colonies through suckering, deer resistant
A	<i>Viburnum dentatum</i>	arrowwood viburnum	native deciduous shrub	6-12' h and w	attracts birds & pollinators, white flowers & blue-black fruit, forms colonies through suckering, deer resistant
A	<i>Viburnum lentego</i>	nannyberry	native deciduous shrub	14-16' h x 6-12' w	attracts birds & pollinators, white flowers & blue-black fruit, forms colonies through suckering, deer resistant
A	<i>Viburnum prunifolium</i>	black haw viburnum	native deciduous shrub	12-15' h x 6-12' w	attracts birds & pollinators, white flowers & blue-black fruit, red to purple fall color, forms colonies through suckering, deer resistant
B	<i>Juniperus virginiana 'Burkii'</i>	Burk Eastern red cedar	native evergreen tree	20-25' h x 8-15' w	male cultivar, deer resistant, male and female specimens needed for berries on female so alternate in 50' sections, do not use straight species as it is too tall
B	<i>Juniperus virginiana 'Canaertii'</i>	Canaert Eastern red cedar	native evergreen tree	20-30' h x 8-15' w	female cultivar, produces grey-green berry-like cones that attract birds, deer resistant, male and female specimens needed for berries on female so alternate in 50' sections, do not use straight species as it is too tall
C	<i>Prunus virginiana</i>	chokecherry	native deciduous shrub	8-15' h and w	attracts birds & pollinators, white flowers, red-black fruit, yellow-orange-red fall color, forms colonies through suckering, deer resistant
D	<i>Cornus mas</i>	cornelian cherry	native deciduous shrub	10-15' h and w	attracts birds & pollinators, yellow flowers, red fruit, forms colonies through suckering, deer resistant
D	<i>Cornus racemosa</i>	gray dogwood	native deciduous shrub	10-15' h and w	attracts birds & pollinators, white flowers & berries, purple-red fall color, forms colonies through suckering, deer resistant
D	<i>Rhus glabra</i>	smooth sumac	native deciduous shrub	10-20' h and w	attracts birds, red fruit, red fall color, forms colonies through suckering
E	<i>Amelanchier x 'Autumn Brilliance'</i>	autumn brilliance serviceberry	native deciduous shrub	15-25' h and w	attracts pollinators and birds, white flowers, red-purple fruit, great fall color, forms colonies through suckering
E	<i>Cornus alternifolia</i>	pagoda dogwood	native deciduous shrub	15-25' h x 20-32' w	attracts birds & pollinators, white flowers & blue-black fruit, reddish fall color, forms colonies through suckering, deer resistant
E	<i>Hamamelis virginiana</i>	common witch hazel	native deciduous shrub	15-20' h and w	attracts birds, yellow flowers & fall color, forms colonies through suckering, deer resistant

Planting Key for Additional Screening Near Solar Array Driveway Along Sharon Turnpike					
KEY	Botanical Name	Common Name	Type	Mature Size	Benefits
1	<i>Acer saccharum</i>	sugar maple	native deciduous tree	40-80' h x 30-60' w	attracts pollinators, great fall color, matches existing allee of trees on parcel along Sharon Turnpike
2	<i>Amelanchier x 'Autumn Brilliance'</i>	Autumn Brilliance serviceberry	native deciduous shrub	15-25' h and w	attracts pollinators and birds, white flowers, red-purple fruit, great fall color, forms colonies through suckering

